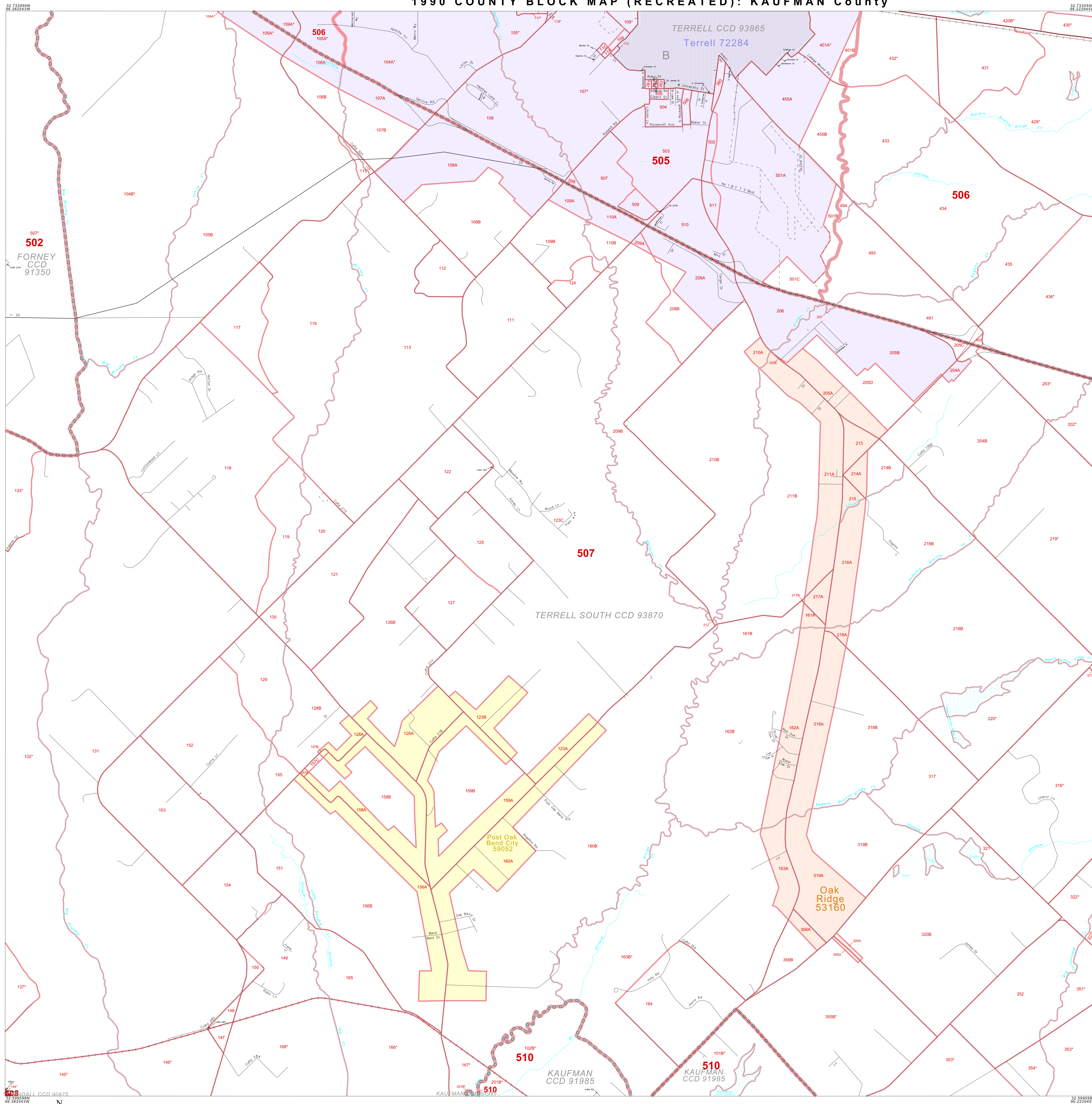
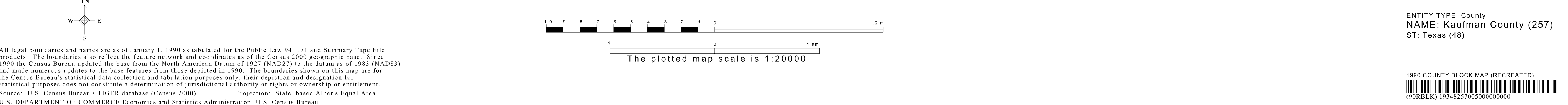


1990 COUNTY BLOCK MAP (RECREATED): KAUFMAN County



LEGEND: SYMBOL, NAME STYLE, INTERNATIONAL, AIR, Trust Land, TJSA / TDSA / ANVSA, ANRC, MINOR CIVIL DIVI. / CCD, Place within Subject Entity, Incorporated Place / CDP, Place outside of Subject Entity, Incorporated Place / CDP, Census Tract / BNA, BLOCK. Includes ABBREVIATION REFERENCE, FEATURES, and notes.



Key to Adjacent Sheets: 3x3 grid with sheet numbers 1-9. Sheet Location within Entity: Map of Texas with Kaufman County highlighted.

SHEET 5 OF 12 PARENT SHEETS
TOTAL SHEETS: 24 (Index 1; Parent 12; Inset 11)
ENTITY TYPE: County
NAME: Kaufman County (257)
ST: Texas (48)

All legal boundaries and names are as of January 1, 1990 as tabulated for the Public Law 94-171 and Summary Tape File products. The boundaries also reflect the feature network and coordinates as of the Census 2000 geographic base.

