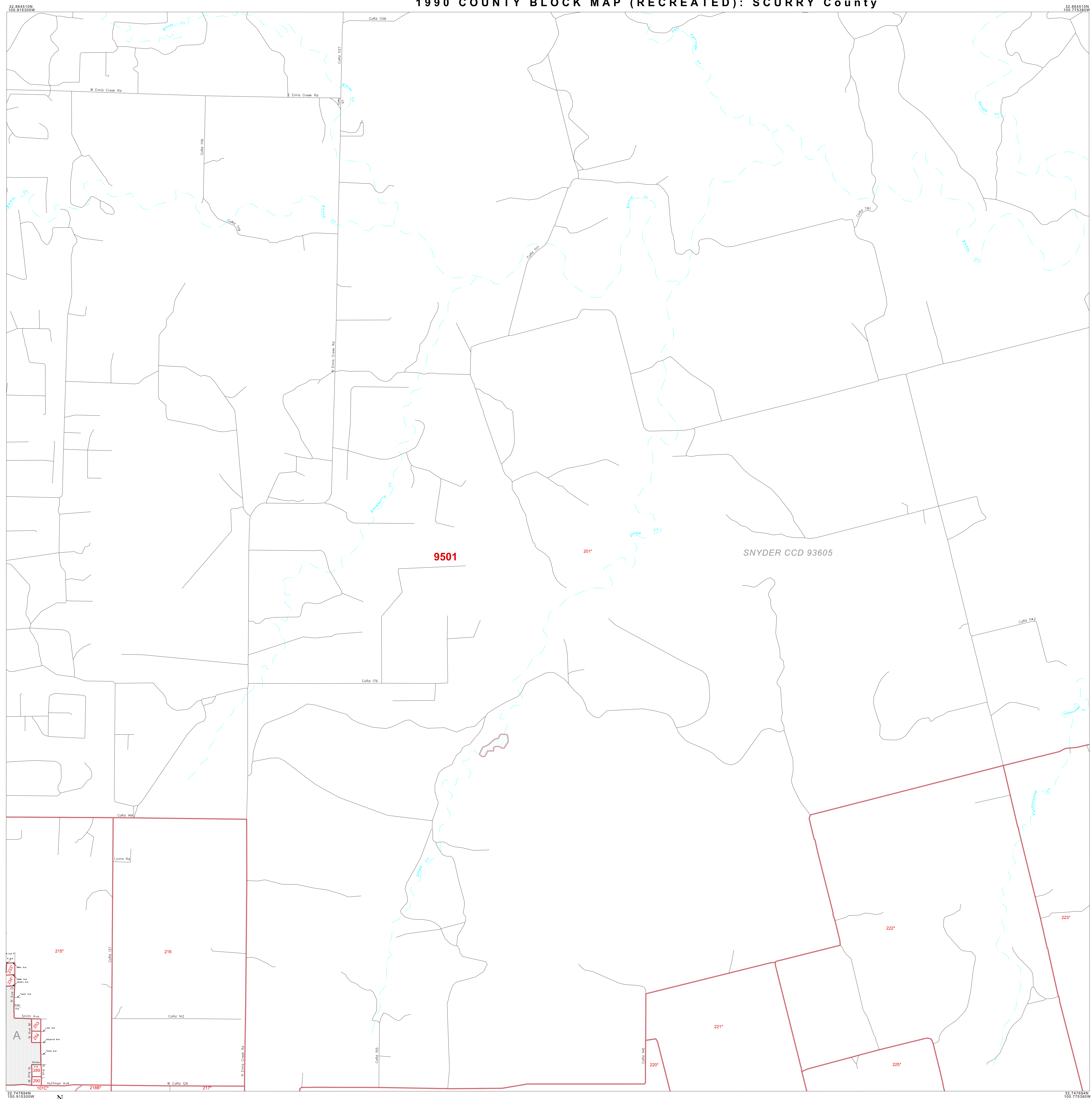


1990 COUNTY BLOCK MAP (RECREATED): SCURRY County



**LEGEND**

*****	INTERNATIONAL
*****	AIR
*****	Trust Land
*****	TJSA / TDSA / ANVSA
*****	ANRC
	MINOR CIVIL DIV <sup>1</sup> / CCD
-----	Place within Subject Entity
-----	Incorporated Place / CDP <sup>1</sup>
-----	Place outside of Subject Entity
-----	Incorporated Place / CDP <sup>1</sup>
-----	Census Tract / BNA <sup>2</sup>
-----	BLOCK <sup>3</sup>

**ABBREVIATION REFERENCE:** AIR = American Indian Reservation; Trust Land = Off-Reservation Trust Land; TDSA = Tribal Jurisdiction Statistical Area; TJSA = Tribal Designated Statistical Area; ANVSA = Alaska Native Village Statistical Area; ANRC = Alaska Native Regional Corporation; CCD = Census Civil Division; CDP = Census Designated Place; BNA = Block Numbering Area

**FEATURES**

Highway	Pipe/Paver Line	Stream/Shoreline
Secondary Road	Ridge/Physical Feature	Intermittent Stream
Deep Trench/Waterway/Ferry	Property/Fence Line	River
Rollroad	Nonvisible Boundary	Creeks

Inset      Out Area

Where international, state, and/or county boundaries coincide, the map shows the boundary symbol for only the highest-ranking of these boundaries.

<sup>1</sup> A "\*" following a place name indicates that the place is also a false MCD; the false MCD name is not shown.

<sup>2</sup> In 1990, the census-of-vessels population of ships at sea was allocated to census tracts with a "0P" suffix. An anchor symbol appeared on the 1990 maps locating a census-of-vessels tract. These maps show a very small area symbolized as a census tract with the census tract number shown near the area.

<sup>3</sup> A "\*" following a block number indicates that the block number is repeated elsewhere in the block.

32 864510N 100 915300W

32 864510N 100 775380W

32 747664N 100 915300W

32 747664N 100 775380W

W Ennis Creek Rd      E Ennis Creek Rd      Lybrite Rd      Huffman Ave      W Collier Rd      S Ennis Creek Rd

CoRd 118      CoRd 119      CoRd 120      CoRd 121      CoRd 122      CoRd 123      CoRd 124      CoRd 125      CoRd 126      CoRd 127      CoRd 128      CoRd 129      CoRd 130      CoRd 131      CoRd 132      CoRd 133      CoRd 134      CoRd 135      CoRd 136      CoRd 137      CoRd 138      CoRd 139      CoRd 140      CoRd 141      CoRd 142      CoRd 143      CoRd 144      CoRd 145      CoRd 146      CoRd 147      CoRd 148      CoRd 149      CoRd 150      CoRd 151      CoRd 152      CoRd 153      CoRd 154      CoRd 155      CoRd 156      CoRd 157      CoRd 158      CoRd 159      CoRd 160      CoRd 161      CoRd 162      CoRd 163      CoRd 164      CoRd 165      CoRd 166      CoRd 167      CoRd 168      CoRd 169      CoRd 170      CoRd 171      CoRd 172      CoRd 173      CoRd 174      CoRd 175      CoRd 176      CoRd 177      CoRd 178      CoRd 179      CoRd 180      CoRd 181      CoRd 182      CoRd 183      CoRd 184      CoRd 185      CoRd 186      CoRd 187      CoRd 188      CoRd 189      CoRd 190      CoRd 191      CoRd 192      CoRd 193      CoRd 194      CoRd 195      CoRd 196      CoRd 197      CoRd 198      CoRd 199      CoRd 200

215°      216°      217°      218°      219°      220°      221°      222°      223°      224°      225°      226°      227°      228°      229°      230°      231°      232°      233°      234°      235°      236°      237°      238°      239°      240°      241°      242°      243°      244°      245°      246°      247°      248°      249°      250°      251°      252°      253°      254°      255°      256°      257°      258°      259°      260°      261°      262°      263°      264°      265°      266°      267°      268°      269°      270°      271°      272°      273°      274°      275°      276°      277°      278°      279°      280°      281°      282°      283°      284°      285°      286°      287°      288°      289°      290°      291°      292°      293°      294°      295°      296°      297°      298°      299°      300°

9 mi      1 km

The plotted map scale is 1:17500

ENTITY TYPE: County  
NAME: Scurry County (415)  
ST: Texas (48)

1990 COUNTY BLOCK MAP (RECREATED)  
[Barcode]  
(PWRDLK) 19548415007000000000

Key to Adjacent Sheets

2	3	4
6	7	8
10	11	12

Sheet Location within Entity

SHEET 7 OF 16 PARENT SHEETS  
TOTAL SHEETS: 22 (Index 1; Parent 16; Inset 5)

All legal boundaries and names are as of January 1, 1990 as tabulated for the Public Law 94-171 and Summary Tape File products. The boundaries also reflect the feature network and coordinates as of the Census 2000 geographic base. Since 1990 the Census Bureau updated the base from the North American Datum of 1927 (NAD27) to the datum as of 1983 (NAD83) and made numerous updates to the base features from those depicted in 1990. The boundaries shown on this map are for the Census Bureau's statistical data collection and tabulation purposes only; their depiction and designation for statistical purposes does not constitute a determination of jurisdictional authority or rights or ownership or entitlement. Source: U.S. Census Bureau's TIGER database (Census 2000)      Projection: State-based Albers's Equal Area U.S. DEPARTMENT OF COMMERCE Economics and Statistics Administration U.S. Census Bureau