

1990 COUNTY BLOCK MAP (RECREATED): RANDALL County

**LEGEND**

SYMBOL	NAME STYLE
*****	INTERNATIONAL
*****	AIR
*****	Trust Land
*****	TJSA / TDSA / ANVSA
*****	ANRC
//////	MINOR CIVIL DIV <sup>1</sup> / CCD
Place within Subject Entity	Incorporated Place / CDP <sup>1</sup>
Place outside of Subject Entity	Incorporated Place / CDP <sup>1</sup>
—————	Census Tract / BNA <sup>2</sup>
—————	BLOCK <sup>3</sup>

**ABBREVIATION REFERENCE:** AIR = American Indian Reservation; Trust Land = Off-Reservation Trust Land; TDSA = Tribal Jurisdiction Statistical Area; TJSAs = Tribal Designated Statistical Area; ANVSA = Alaska Native Village Statistical Area; ANRC = Alaska Native Regional Corporation; CCD = Census Civil Division; CDP = Census Designated Place; BNA = Block Numbering Area

**FEATURES**

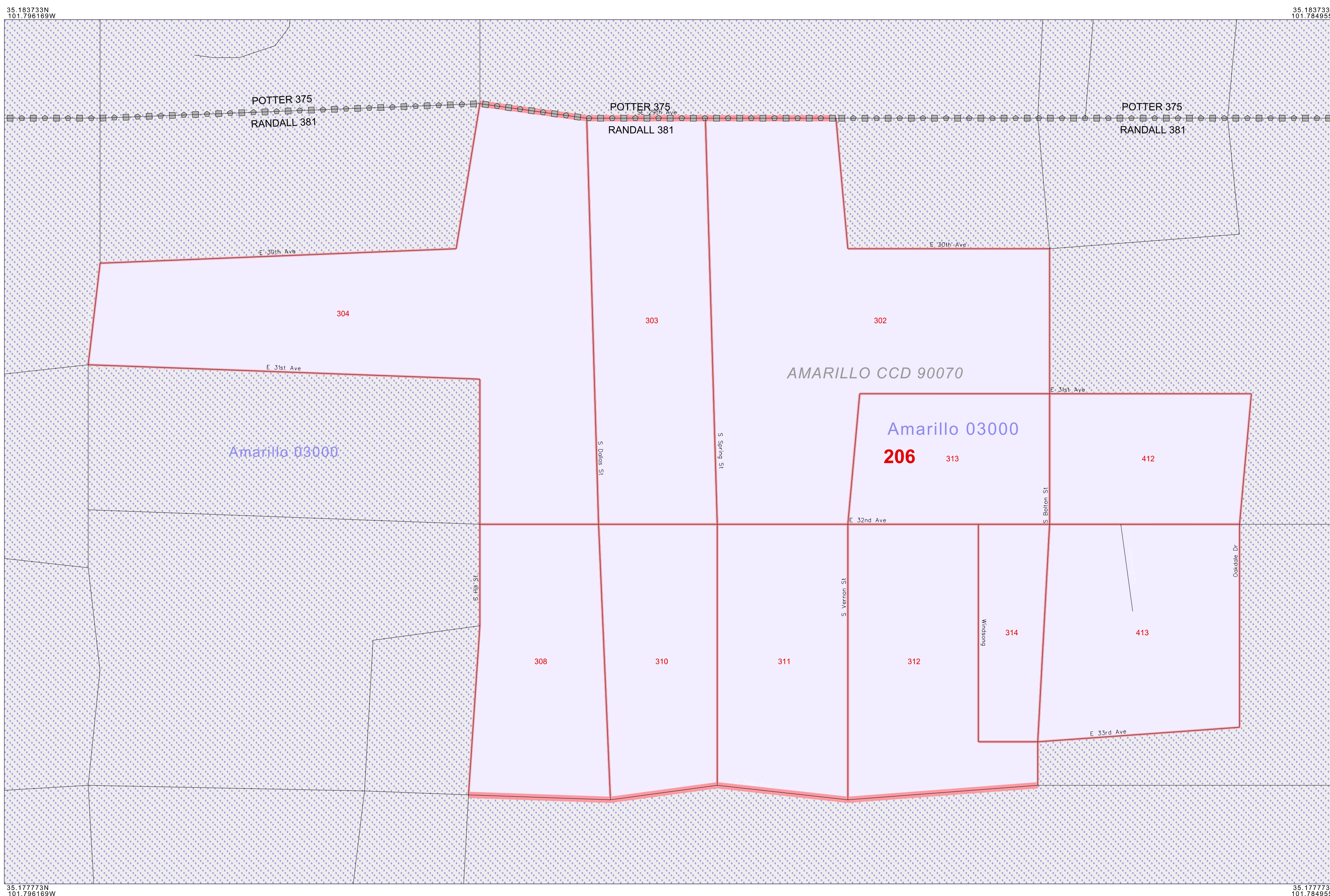
Highway	Pipe/Paver Line	Stream/Shoaline
Secondary Road	Ridge/Physical Feature	Intermittent Stream
Deep Trench/Wharf/Ferry	Property/Fence Line	River
Railroad	Nonvisible Boundary	Canal
—————	—————	—————

Where international, state, and/or county boundaries coincide, the map shows the boundary symbol for only the highest-ranking of these boundaries.

<sup>1</sup> A "\*" following a place name indicates that the place is also a false MCD; the false MCD name is not shown.

<sup>2</sup> In 1990, the crews-of-vessel population of ships at sea was allocated to census tracts with a "00" suffix. An anchor symbol appeared on the 1990 maps locating a crews-of-vessel tract. These maps show a very small area symbolized as a census tract with the census tract number shown near the area.

<sup>3</sup> A "\*" following a block number indicates that the block number is repeated elsewhere in the block.



35 182733N  
101 786165W

POTTER 375  
RANDALL 381

POTTER 375  
RANDALL 381

POTTER 375  
RANDALL 381

E 29th Ave

E 30th Ave

E 31st Ave

E 32nd Ave

E 33rd Ave

E 34th Ave

E 35th Ave

S 10th St

S 11th St

S 12th St

S 13th St

S 14th St

S 15th St

S 16th St

S 17th St

S 18th St

S 19th St

S 20th St

S 21st St

S 22nd St

S 23rd St

S 24th St

S 25th St

S 26th St

S 27th St

S 28th St

S 29th St

S 30th St

S 31st St

S 32nd St

S 33rd St

S 34th St

S 35th St

S 36th St

S 37th St

S 38th St

S 39th St

S 40th St

S 41st St

S 42nd St

S 43rd St

S 44th St

S 45th St

S 46th St

S 47th St

S 48th St

S 49th St

S 50th St

S 51st St

S 52nd St

S 53rd St

S 54th St

S 55th St

S 56th St

S 57th St

S 58th St

S 59th St

S 60th St

S 61st St

S 62nd St

S 63rd St

S 64th St

S 65th St

S 66th St

S 67th St

S 68th St

S 69th St

S 70th St

S 71st St

S 72nd St

S 73rd St

S 74th St

S 75th St

S 76th St

S 77th St

S 78th St

S 79th St

S 80th St

S 81st St

S 82nd St

S 83rd St

S 84th St

S 85th St

S 86th St

S 87th St

S 88th St

S 89th St

S 90th St

S 91st St

S 92nd St

S 93rd St

S 94th St

S 95th St

S 96th St

S 97th St

S 98th St

S 99th St

S 100th St

AMARILLO CCD 90070

Amarillo 03000

Amarillo 03000  
206

304

303

302

308

310

311

312

313

314

412

413

35 177733N  
101 796165W

35 182733N  
101 786165W

35 177733N  
101 796165W

35 182733N  
101 786165W

100 0 100 yd

100 0 100 m

The plotted map scale is 1:2000

Key to Adjacent Sheets

Sheet Location within Entity

INSET SHEET A01 of A01  
TOTAL SHEETS: 27 (Index 1; Parent 16; Inset 10)

ENTITY TYPE: County  
NAME: Randall County (381)  
ST: Texas (48)

1990 COUNTY BLOCK MAP (RECREATED)  
7484831620100000000

All legal boundaries and names are as of January 1, 1990 as tabulated for the Public Law 94-171 and Summary Tape File products. The boundaries also reflect the feature network and coordinates as of the Census 2000 geographic base. Since 1990 the Census Bureau updated the base from the North American Datum of 1927 (NAD27) to the datum as of 1983 (NAD83) and made numerous updates to the base features from those depicted in 1990. The boundaries shown on this map are for the Census Bureau's statistical data collection and tabulation purposes only; their depiction and designation for statistical purposes does not constitute a determination of jurisdictional authority or rights or ownership or entitlement. Source: U.S. Census Bureau's TIGER database (Census 2000) Projection: State-based Albers' Equal Area U.S. DEPARTMENT OF COMMERCE Economics and Statistics Administration U.S. Census Bureau