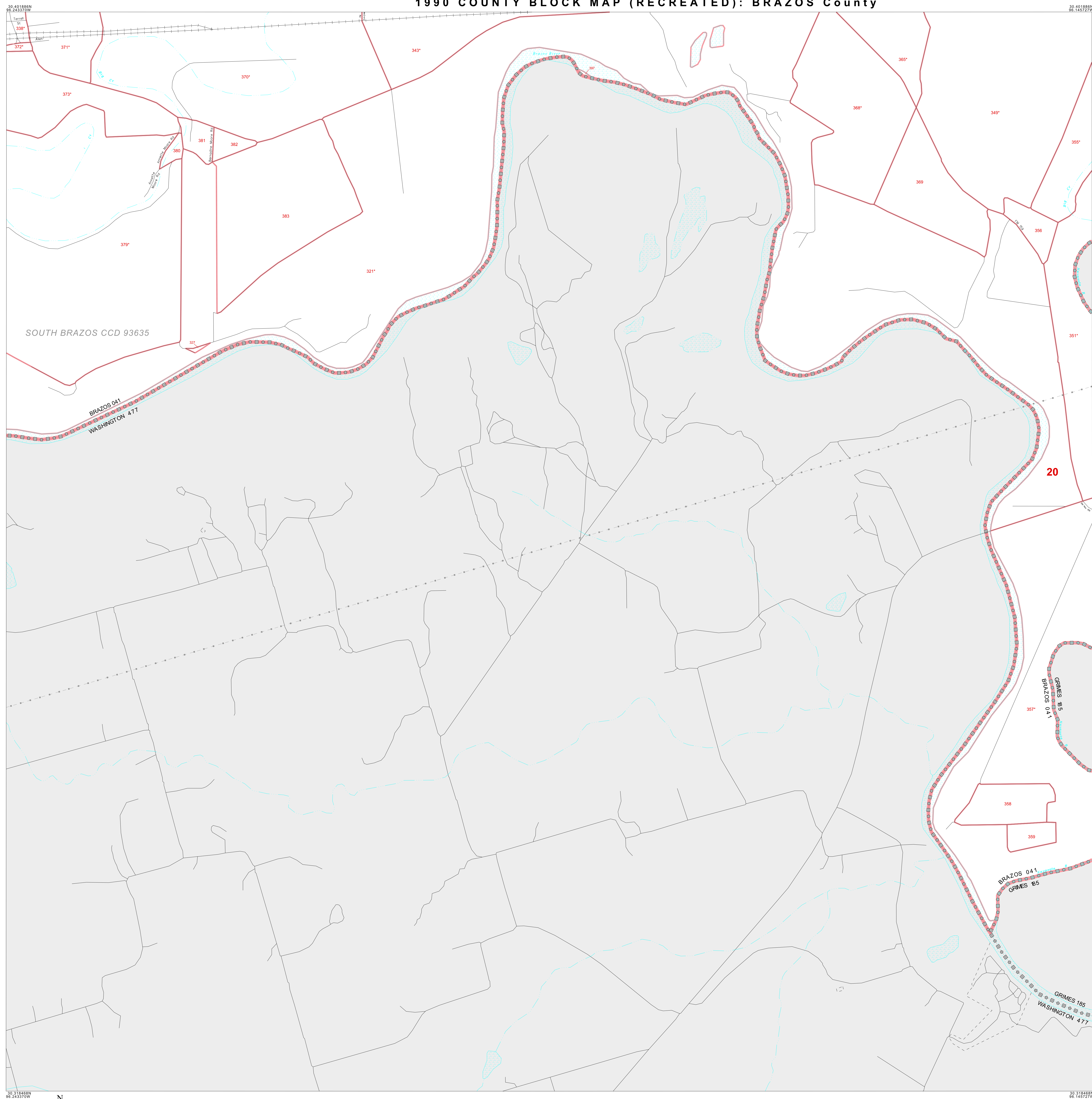


# 1990 COUNTY BLOCK MAP (RECREATED): BRAZOS County



### LEGEND

SYMBOL	NAME STYLE
☆☆☆☆	INTERNATIONAL
☆☆☆☆	AIR
☆☆☆☆	Trust Land
☆☆☆☆	TJSA / TDSA / ANVSA
☆☆☆☆	ANRC
■■■■	MINOR CIVIL DIV <sup>1</sup> / CCD
■■■■	Place within Subject Entity
■■■■	Incorporated Place / CDP <sup>1</sup>
■■■■	Place outside of Subject Entity
■■■■	Incorporated Place / CDP <sup>1</sup>
■■■■	Census Tract / BNA <sup>2</sup>
■■■■	BLOCK <sup>3</sup>

ABBREVIATION REFERENCE: AIR = American Indian Reservation; Trust Land = Off-Reservation Trust Land; TDSA = Tribal Jurisdiction Statistical Area; TJSA = Tribal Designated Statistical Area; ANVSA = Alaska Native Village Statistical Area; ANRC = Alaska Native Regional Corporation; CCD = Census Civil Division; CDP = Census Designated Place; BNA = Block Numbering Area

### FEATURES

Highway	Pipe/Paver Line	Stream/Shoaling
Secondary Road	Ridge/Physical Feature	Intermittent Stream
Deep Trench/Waterway/Ferry	Property/Fence Line	River
Railroad	Nonvisible Boundary	Glacier

Where international, state, and/or county boundaries coincide, the map shows the boundary symbol for only the highest-ranking of these boundaries.

<sup>1</sup> A "\*" following a place name indicates that the place is also a false MCD; the false MCD name is not shown.

<sup>2</sup> In 1990, the census-of-vessel population of ships at sea was allocated to census tracts with a "00" suffix. An anchor symbol appeared on the 1990 maps locating a census-of-vessel tract. These maps show a very small area symbolized as a census tract with the census tract number shown near the area.

<sup>3</sup> A "\*" following a block number indicates that the block number is repeated elsewhere in the block.

30 31 8 88 N  
96 14 8 72 W

30 40 18 88 N  
96 24 33 70 W

30 31 8 88 N  
96 14 8 72 W

30 40 18 88 N  
96 24 33 70 W

0 1 2 3 4 5 6 mi  
0 1 2 3 4 5 6 km

The plotted map scale is 1:12500

ENTITY TYPE: County  
NAME: Brazos County (041)  
ST: Texas (48)

1990 COUNTY BLOCK MAP (RECREATED)  
(PDRDLK) 1954804102900000000

Key to Adjacent Sheets

25	26	27
28	29	30

SHEET 29 OF 30 PARENT SHEETS  
TOTAL SHEETS: 38 (Index 1; Parent 30; Inset 7)

Sheet Location within Entity