

# 1990 COUNTY BLOCK MAP (RECREATED): BRAZOS County

**LEGEND**

SYMBOL	NAME STYLE
*****	INTERNATIONAL
*****	AIR
*****	Trust Land
*****	TJSA / TDSA / ANVSA
*****	ANRC
■■■■■	MINOR CIVIL DIV. / CCD
Place within Subject Entity	Incorporated Place / CDP <sup>1</sup>
Place outside of Subject Entity	Incorporated Place / CDP <sup>1</sup>
————	Census Tract / BNA <sup>2</sup>
Block <sup>3</sup>	

**ABBREVIATION REFERENCE:** AIR = American Indian Reservation;  
 Trust Land = Off-Reservation Trust Land; TDSA = Tribal Jurisdiction  
 Statistical Area; TJSAs = Tribal Designated Statistical Area;  
 ANVSA = Alaska Native Village Statistical Area; ANRC = Alaska Native  
 Regional Corporation; CCD = Census Civil Division;  
 CDP = Census Designated Place; BNA = Block Numbering Area

**FEATURES**

Highway	Pipe/Paver Line	Stream/Shoestring
Secondary Road	Ridge/Physical Feature	Intermittent Stream
Leap Trail/Walkway/Ferry	Property/Fence Line	River
Railroad	Nonvisible Boundary	Creeks

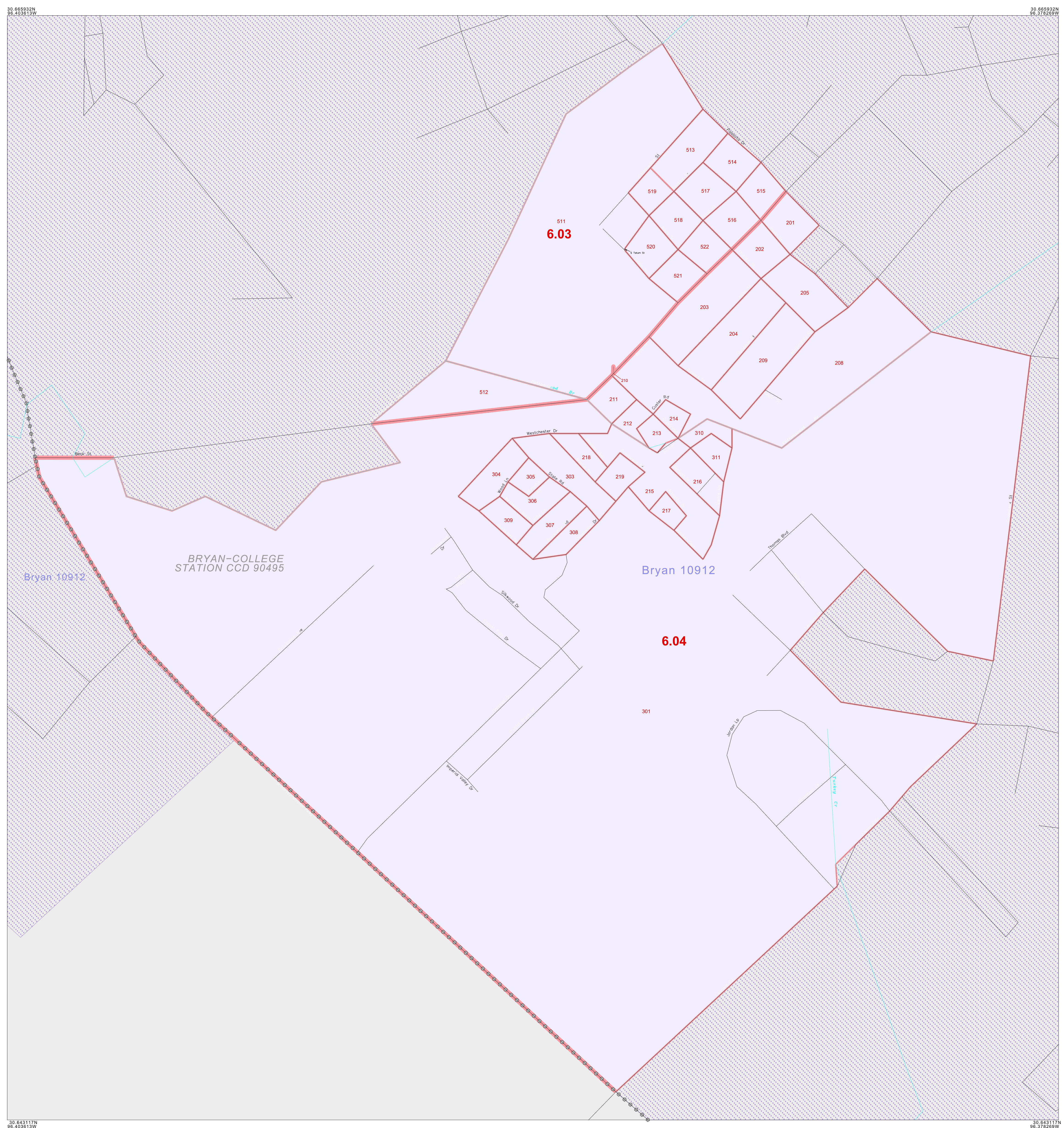
**Inset**      **Out Area**

Where international, state, and/or county boundaries coincide, the map shows the boundary symbol for only the highest-ranking of these boundaries.

<sup>1</sup> A " " following a place name indicates that the place is also a false MCD; the false MCD name is not shown.

<sup>2</sup> In 1990, the census-of-vessel population of ships at sea was allocated to census tracts with a "SP" suffix. An anchor symbol appeared on the 1990 maps locating a census-of-vessel tract. These maps show a very small area symbolized as a census tract with the census tract number shown near the area.

<sup>3</sup> A " " following a block number indicates that the block number is repeated elsewhere in the block.



**Key to Adjacent Sheets**

**Sheet Location within Entity**

INSET SHEET B01 of B01  
 TOTAL SHEETS: 38 (Index 1; Parent 30; Inset 7)