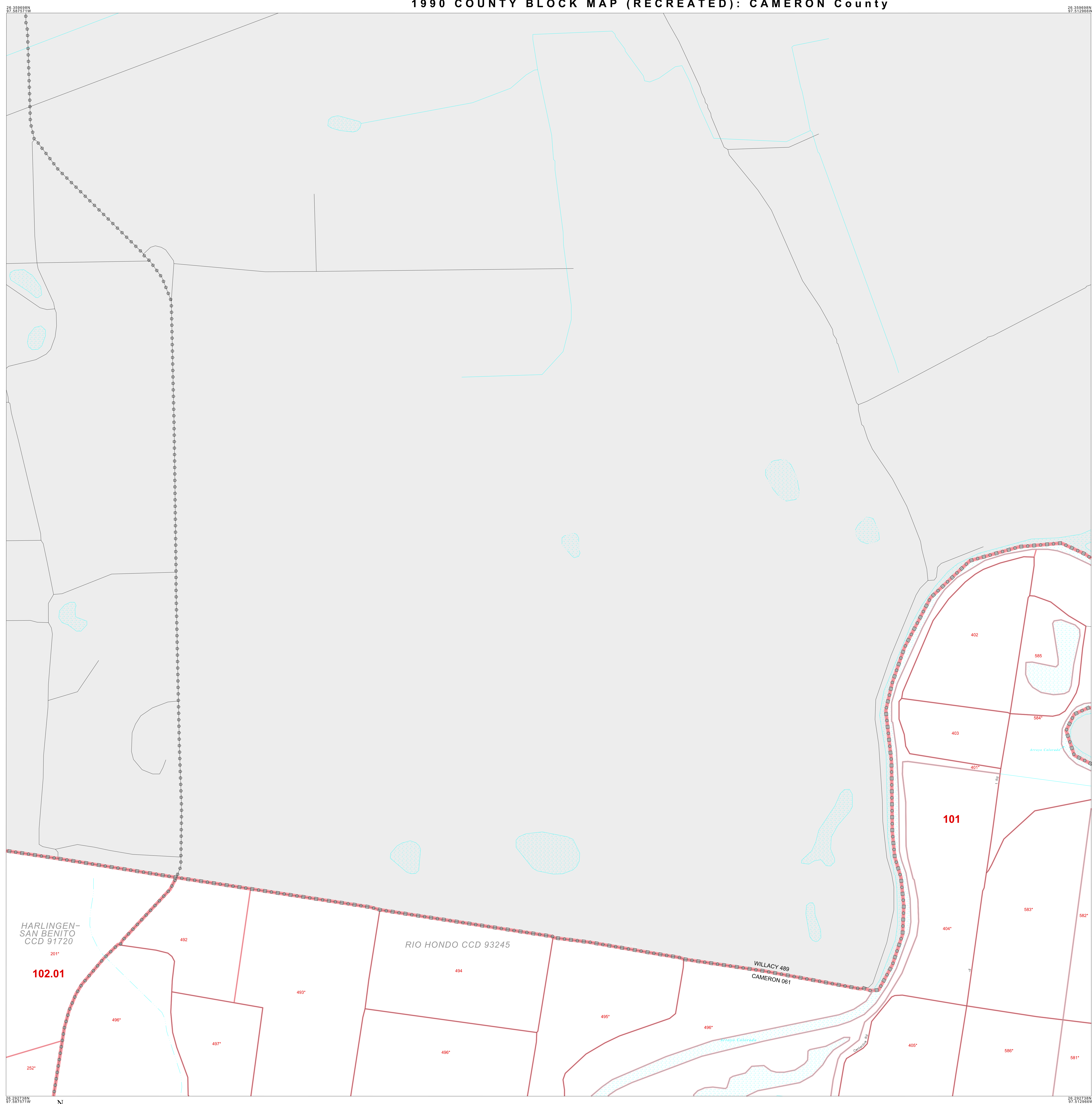


1990 COUNTY BLOCK MAP (RECREATED): CAMERON County



LEGEND

| SYMBOL | NAME STYLE |
|---------------------------------|---------------------------------------|
| ***** | INTERNATIONAL |
| ***** | AIR |
| ***** | Trust Land |
| ***** | TJSA / TDSA / ANVSA |
| ***** | ANRC |
| ////// | MINOR CIVIL DIV ¹ / CCD |
| Place within Subject Entity | Incorporated Place / CDP ¹ |
| Place outside of Subject Entity | Incorporated Place / CDP ¹ |
| ———— | Census Tract / BNA ² |
| Block ³ | |

ABBREVIATION REFERENCE: AIR = American Indian Reservation; Trust Land = Off-Reservation Trust Land; TDSA = Tribal Jurisdiction Statistical Area; TJSA = Tribal Designated Statistical Area; ANVSA = Alaska Native Village Statistical Area; ANRC = Alaska Native Regional Corporation; CCD = Census Civil Division; CDP = Census Designated Place; BNA = Block Numbering Area

FEATURES

| | | |
|---------------------------|------------------------|---------------------|
| Highway | Pipe/Paver Line | Stream/Shoaline |
| Secondary Road | Ridge/Physical Feature | Intermittent Stream |
| Deep Trench/Wharves/Ferry | Property/Fence Line | River |
| Railroad | Nonvisible Boundary | Canal |

Where international, state, and/or county boundaries coincide, the map shows the boundary symbol for only the highest-ranking of these boundaries.

¹ A "*" following a place name indicates that the place is also a false MCD; the false MCD name is not shown.

² In 1990, the crew-of-vessel population of ships at sea was allocated to census tracts with a "SV" suffix. An anchor symbol appeared on the 1990 maps locating a crew-of-vessel tract. These maps show a very small area symbolized as a census tract with the census tract number shown near the area.

³ A "*" following a block number indicates that the block number is repeated elsewhere in the block.