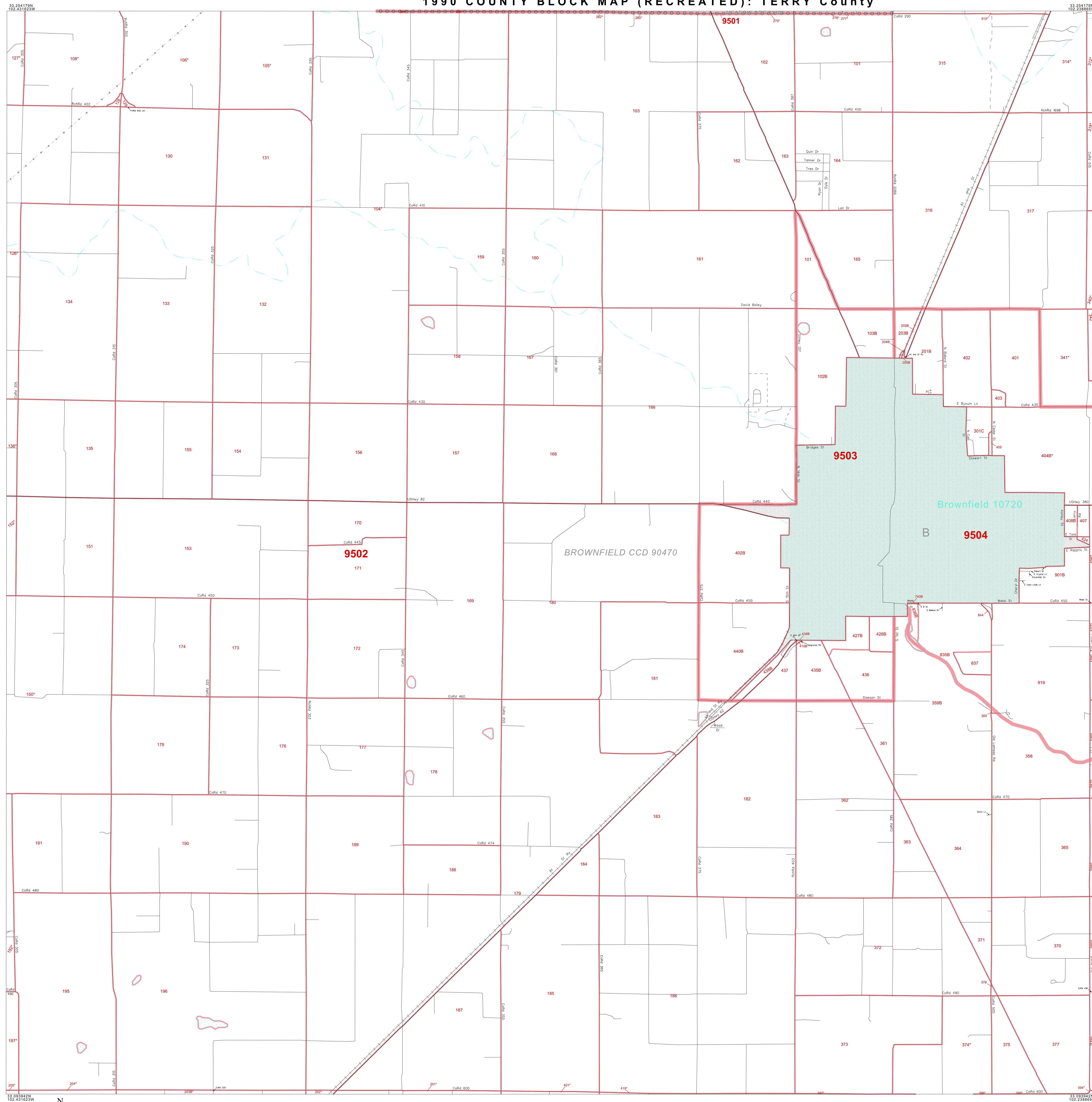


# 1990 COUNTY BLOCK MAP (RECREATED): TERRY County



### LEGEND

**SYMBOL**    **NAME STYLE**

- ☆☆☆☆☆    **INTERNATIONAL**
- \*\*\*\*\*    **AIR**
- \*\*\*\*\*    **Trust Land**
- \*\*\*\*\*    **TJSA / TDSA / ANVSA**
- \*\*\*\*\*    **ANRC**
- **MINOR CIVIL DIV. / CCD**
- **Place within Subject Entity**
- **Incorporated Place / CDP<sup>1</sup>**
- **Place outside of Subject Entity**
- **Incorporated Place / CDP<sup>1</sup>**
- **Census Tract / BNA<sup>2</sup>**
- **BLOCK<sup>3</sup>**

**ABBREVIATION REFERENCE:** AIR = American Indian Reservation; Trust Land = Off-Reservation Trust Land; TDSA = Tribal Jurisdiction Statistical Area; TJSA = Tribal Designated Statistical Area; ANVSA = Alaska Native Village Statistical Area; ANRC = Alaska Native Regional Corporation; CCD = Census Civil Division; CDP = Census Designated Place; BNA = Block Numbering Area

**FEATURES**

Highway	Ridge/Power Line	Stream/Shoaline
Secondary Road	Ridge/Physical Feature	Intermittent Stream
Deep Trench/Waterway/Ferry	Property/Fence Line	River
Railroad	Nonvisible Boundary	Creeks

Where international, state, and/or county boundaries coincide, the map shows the boundary symbol for only the highest-ranking of these boundaries.

<sup>1</sup> A "\*" following a place name indicates that the place is also a false MCD; the false MCD name is not shown.

<sup>2</sup> In 1990, the crew-of-vessel population of ships at sea was allocated to census tracts with a "99" suffix. An anchor symbol appeared on the 1990 maps locating a crew-of-vessel tract. These maps show a very small area symbolized as a census tract with the census tract number shown near the area.

<sup>3</sup> A "\*" following a block number indicates that the block number is repeated elsewhere in the block.

**Inset**    **Out Area**