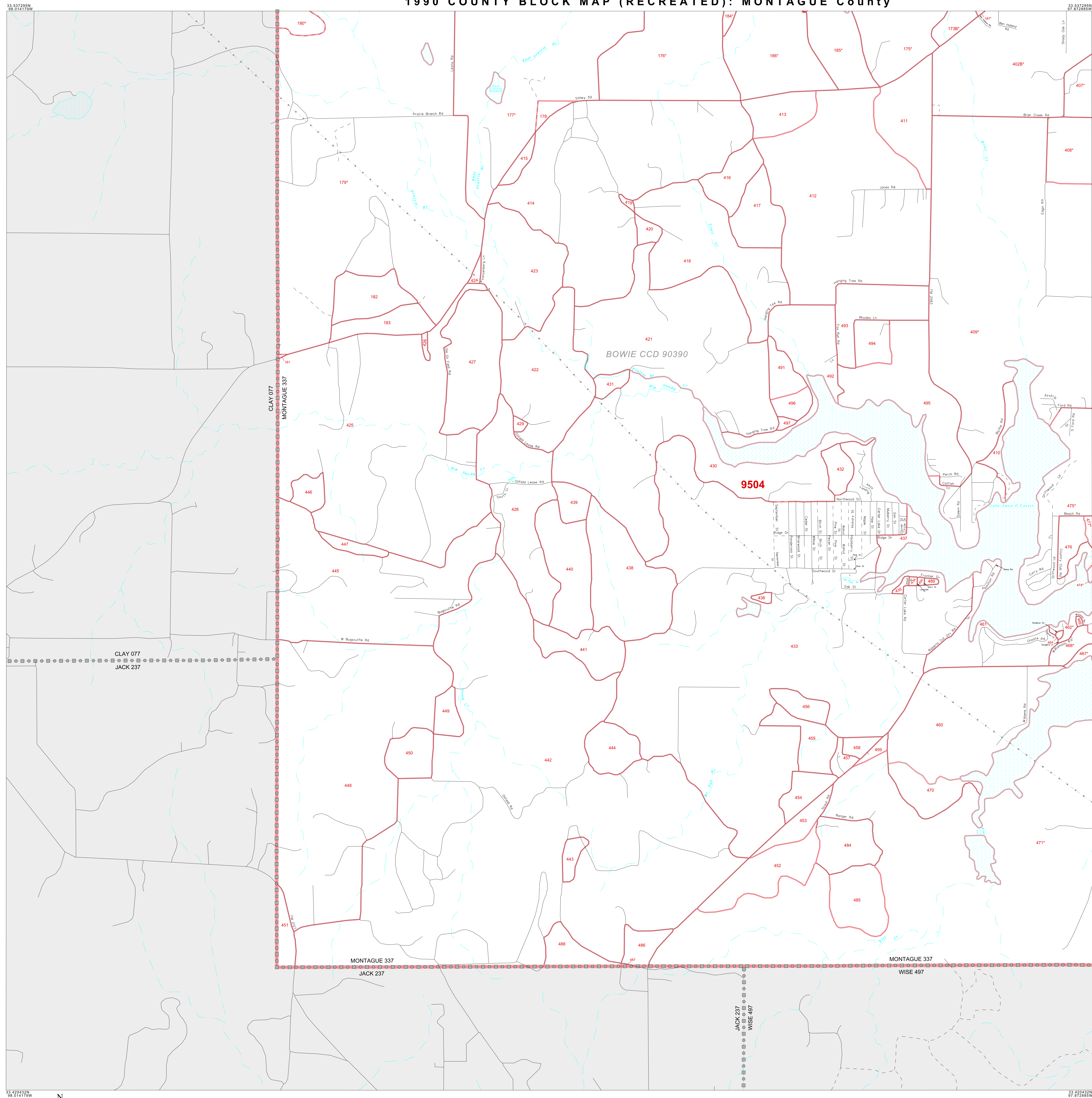


1990 COUNTY BLOCK MAP (RECREATED): MONTAGUE County



LEGEND

SYMBOL	NAME STYLE
☆☆☆☆	INTERNATIONAL
☆☆☆☆	AIR
☆☆☆☆	Trust Land
☆☆☆☆	TJSA / TDSA / ANVSA
☆☆☆☆	ANRC
□□□□	MINOR CIVIL DIV' / CCD
□□□□	Place within Subject Entity
□□□□	Incorporated Place / CDP ¹
□□□□	Place outside of Subject Entity
□□□□	Incorporated Place / CDP ¹
□□□□	Census Tract / BNA ²
□□□□	BLOCK ³

ABBREVIATION REFERENCE: AIR = American Indian Reservation; Trust Land = Off-Reservation Trust Land; TDSA = Tribal Jurisdiction Statistical Area; TJSA = Tribal Designated Statistical Area; ANVSA = Alaska Native Village Statistical Area; ANRC = Alaska Native Regional Corporation; CCD = Census Civil Division; CDP = Census Designated Place; BNA = Block Numbering Area.

FEATURES

Highway	Pipe/Paver Line	Stream/Shoaline
Secondary Road	Ridge/Physical Feature	Intermittent Stream
Deep Trench/Warehouse/Ferry	Property/Fence Line	River
Railroad	Nonvisible Boundary	Canal

Inset Out Area

Where international, state, and/or county boundaries coincide, the map shows the boundary symbol for only the highest-ranking of these boundaries.

¹ A "*" following a place name indicates that the place is also a false MCD; the false MCD name is not shown.

² In 1990, the census-of-vessels population of ships at sea was allocated to census tracts with a "SP" suffix. An asterisk symbol on the 1990 maps locating a census-of-vessel tract. These maps show a very small area symbolized as a census tract with the census tract number shown near the area.

³ A "*" following a block number indicates that the block number is repeated elsewhere in the block.

Key to Adjacent Sheets

13	14
17	18

Sheet Location within Entity

SHEET 17 OF 20 PARENT SHEETS
TOTAL SHEETS: 26 (Index 1; Parent 20; Inset 5)