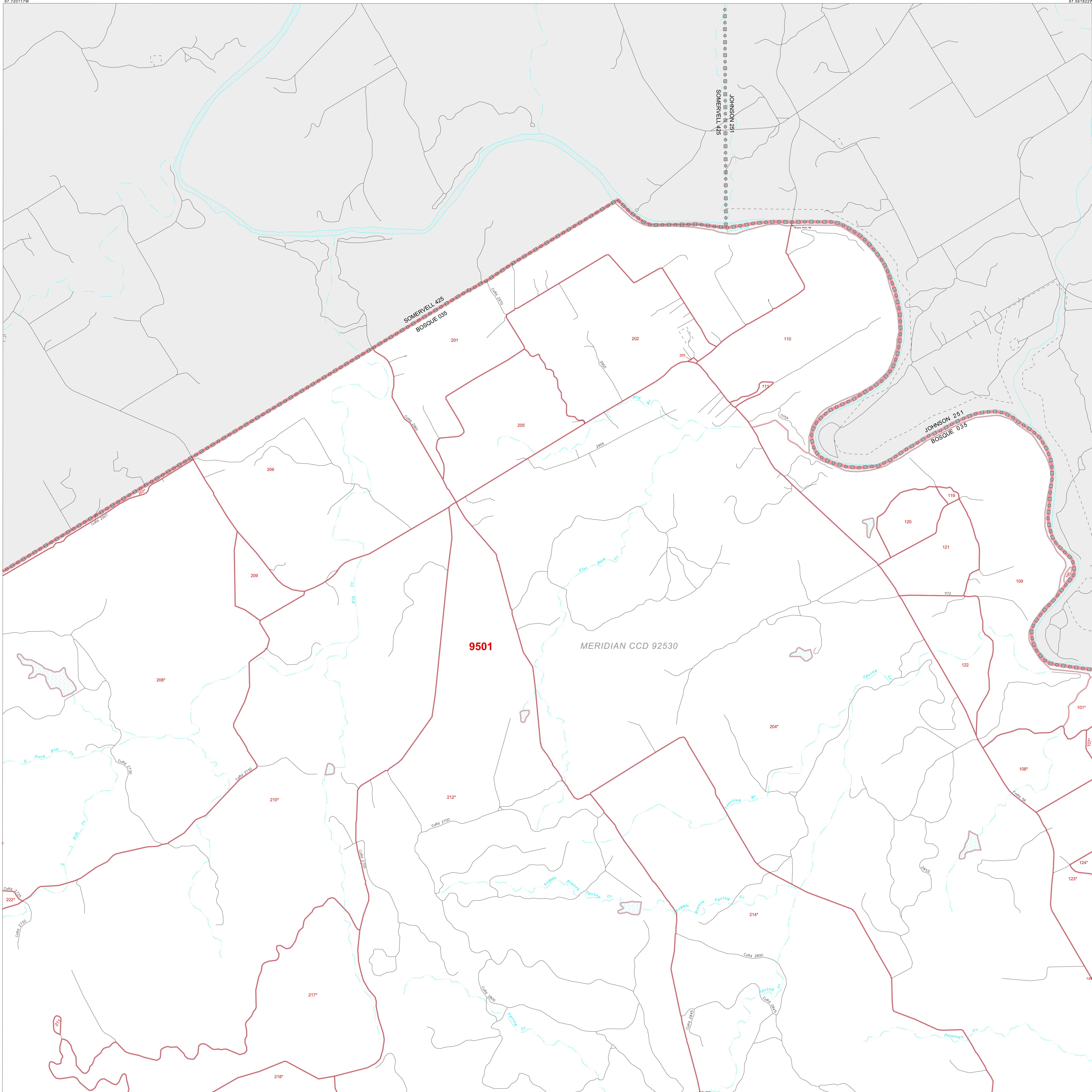


1990 COUNTY BLOCK MAP (RECREATED): BOSQUE County

32 231038N  
97 720117W

32 231038N  
97 581822W



**LEGEND**

SYMBOL	NAME STYLE
*****	INTERNATIONAL
*****	AIR
*****	Trust Land
*****	TJSA / TDSA / ANVSA
*****	ANRC
	MINOR CIVIL DIV <sup>1</sup> / CCD
□	Place within Subject Entity
□	Incorporated Place / CDP <sup>1</sup>
□	Place outside of Subject Entity
□	Incorporated Place / CDP <sup>1</sup>
—	Census Tract / BNA <sup>2</sup>
—	BLOCK <sup>3</sup>

ABBREVIATION REFERENCE: AIR = American Indian Reservation; Trust Land = Off-Reservation Trust Land; TDSA = Tribal Jurisdiction Statistical Area; TJSA = Tribal Designated Statistical Area; ANVSA = Alaska Native Village Statistical Area; ANRC = Alaska Native Regional Corporation; CCD = Census Civil Division; CDP = Census Designated Place; BNA = Block Numbering Area

**FEATURES**

Highway	Pipe/Paver Line	Stream/Shoreline
Secondary Road	Ridge/Physical Feature	Intermittent Stream
Deep Trench/Waterway/Ferry	Property/Fence Line	River
Railroad	Nonvisible Boundary	Creeks

Inset      Out Area

Where international, state, and/or county boundaries coincide, the map shows the boundary symbol for only the highest-ranking of these boundaries.  
<sup>1</sup> A "\*" following a place name indicates that the place is also a false MCD; the false MCD name is not shown.  
<sup>2</sup> In 1990, the crew-of-vessel population of ships at sea was allocated to census tracts with a "0P" suffix. An anchor symbol appeared on the 1990 maps locating a crew-of-vessel tract. These maps show a very small area symbolized as a census tract with the census tract number shown near the area.  
<sup>3</sup> A "\*" following a block number indicates that the block number is repeated elsewhere in the block.

Key to Adjacent Sheets

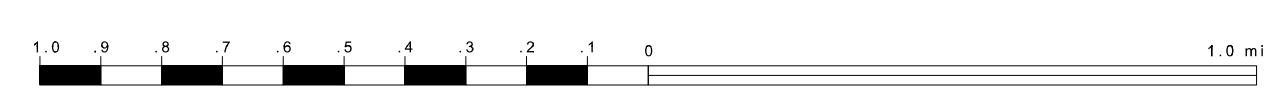
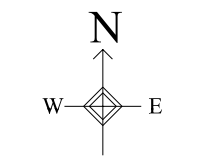
1	2	3
5	6	7

Sheet Location within Entity

SHEET 2 OF 21 PARENT SHEETS  
TOTAL SHEETS: 37 (Index 1; Parent 21; Inset 15)

32 207567N  
97 720117W

32 207567N  
97 581822W



The plotted map scale is 1:20000

ENTITY TYPE: County  
NAME: Bosque County (035)  
ST: Texas (48)

All legal boundaries and names are as of January 1, 1990 as tabulated for the Public Law 94-171 and Summary Tape File products. The boundaries also reflect the feature network and coordinates as of the Census 2000 geographic base. Since 1990 the Census Bureau updated the base from the North American Datum of 1927 (NAD27) to the datum as of 1983 (NAD83) and made numerous updates to the base features from those depicted in 1990. The boundaries shown on this map are for the Census Bureau's statistical data collection and tabulation purposes only; their depiction and designation for statistical purposes does not constitute a determination of jurisdictional authority or rights or ownership or entitlement. Source: U.S. Census Bureau's TIGER database (Census 2000) Projection: State-based Albers's Equal Area U.S. DEPARTMENT OF COMMERCE Economics and Statistics Administration U.S. Census Bureau

