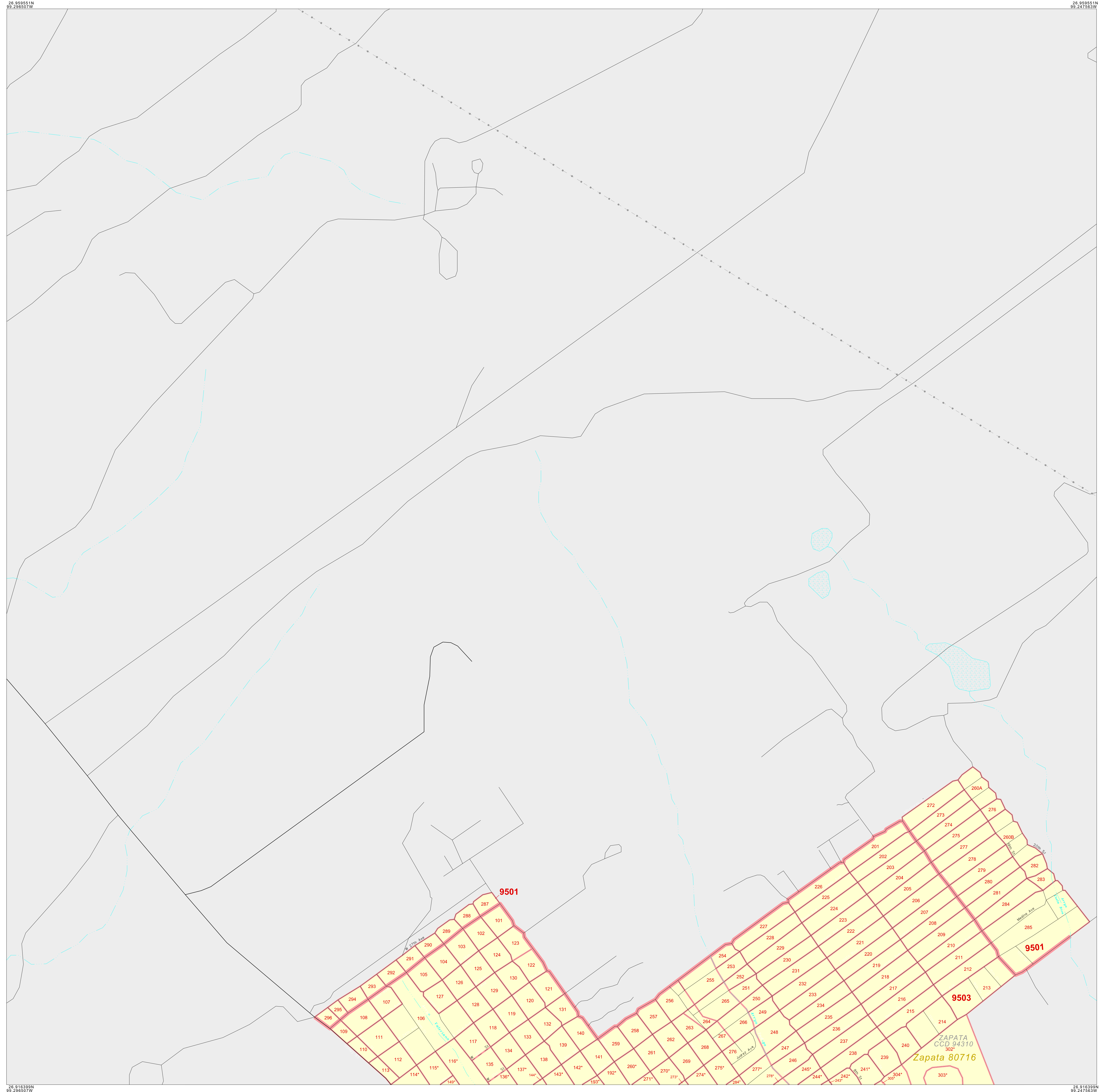


1990 COUNTY BLOCK MAP (RECREATED): ZAPATA County



LEGEND

SYMBOL	NAME STYLE
☆☆☆☆	INTERNATIONAL
*****	AIR
◇◇◇◇◇	Trust Land
◇◇◇◇◇	TJSA / TDSA / ANVSA
▽▽▽▽	ANRC
□□□□	MINOR CIVIL DIV ¹ / CCD
Place within Subject Entity	Incorporated Place / CDP ¹
Place outside of Subject Entity	Incorporated Place / CDP ¹
————	Census Tract / BNA ²
————	BLOCK ³

ABBREVIATION REFERENCE: AIR = American Indian Reservation; Trust Land = Off-Reservation Trust Land; TDSA = Tribal Jurisdiction Statistical Area; TJSAs = Tribal Designated Statistical Area; ANVSA = Alaska Native Village Statistical Area; ANRC = Alaska Native Regional Corporation; CCD = Census Civil Division; CDP = Census Designated Place; BNA = Block Numbering Area

FEATURES	
Highway	Ridge/Physical Feature
Secondary Road	Ridge/Physical Feature
Deep Trench/Warehouse/Ferry	Property/Fence Line
Railroad	Nonvisible Boundary
City	Stream/Shoreline
Inset	Intermittent Stream
Out Area	River
	Creeks

Where international, state, and/or county boundaries coincide, the map shows the boundary symbol for only the highest-ranking of these boundaries.
¹ A "*" following a place name indicates that the place is also a false MCD; the false MCD name is not shown.
² In 1990, the crews-of-vessel population of ships at sea was allocated to census tracts with a "CV" suffix. An anchor symbol appeared on the 1990 maps locating a crews-of-vessel tract. These maps show a very small area symbolized as a census tract with the census tract number shown near the area.
³ A "*" following a block number indicates that the block number is repeated elsewhere in the block.

26 916395N 99 247563W

26 96551N 99 247563W

26 916395N 99 247563W

26 96551N 99 247563W

0 1 2 3 4 5 6 km

0 1 2 3 4 5 6 mi

The plotted map scale is 1:7000

ENTITY TYPE: County
 NAME: Zapata County (505)
 ST: Texas (48)

1990 COUNTY BLOCK MAP (RECREATED)
 (WORLDK) 9954850560100000000

Key to Adjacent Sheets

B01	B02	B03	B04
-----	-----	-----	-----

INSET SHEET B01 of B11
 TOTAL SHEETS: 26 (Index 1; Parent 13; Inset 12)

All legal boundaries and names are as of January 1, 1990 as tabulated for the Public Law 94-171 and Summary Tape File products. The boundaries also reflect the feature network and coordinates as of the Census 2000 geographic base. Since 1990 the Census Bureau updated the base from the North American Datum of 1927 (NAD27) to the datum as of 1983 (NAD83) and made numerous updates to the base features from those depicted in 1990. The boundaries shown on this map are for the Census Bureau's statistical data collection and tabulation purposes only; their depiction and designation for statistical purposes does not constitute a determination of jurisdictional authority or rights or ownership or entitlement. Source: U.S. Census Bureau's TIGER database (Census 2000) Projection: State-based Albers Equal Area U.S. DEPARTMENT OF COMMERCE Economics and Statistics Administration U.S. Census Bureau