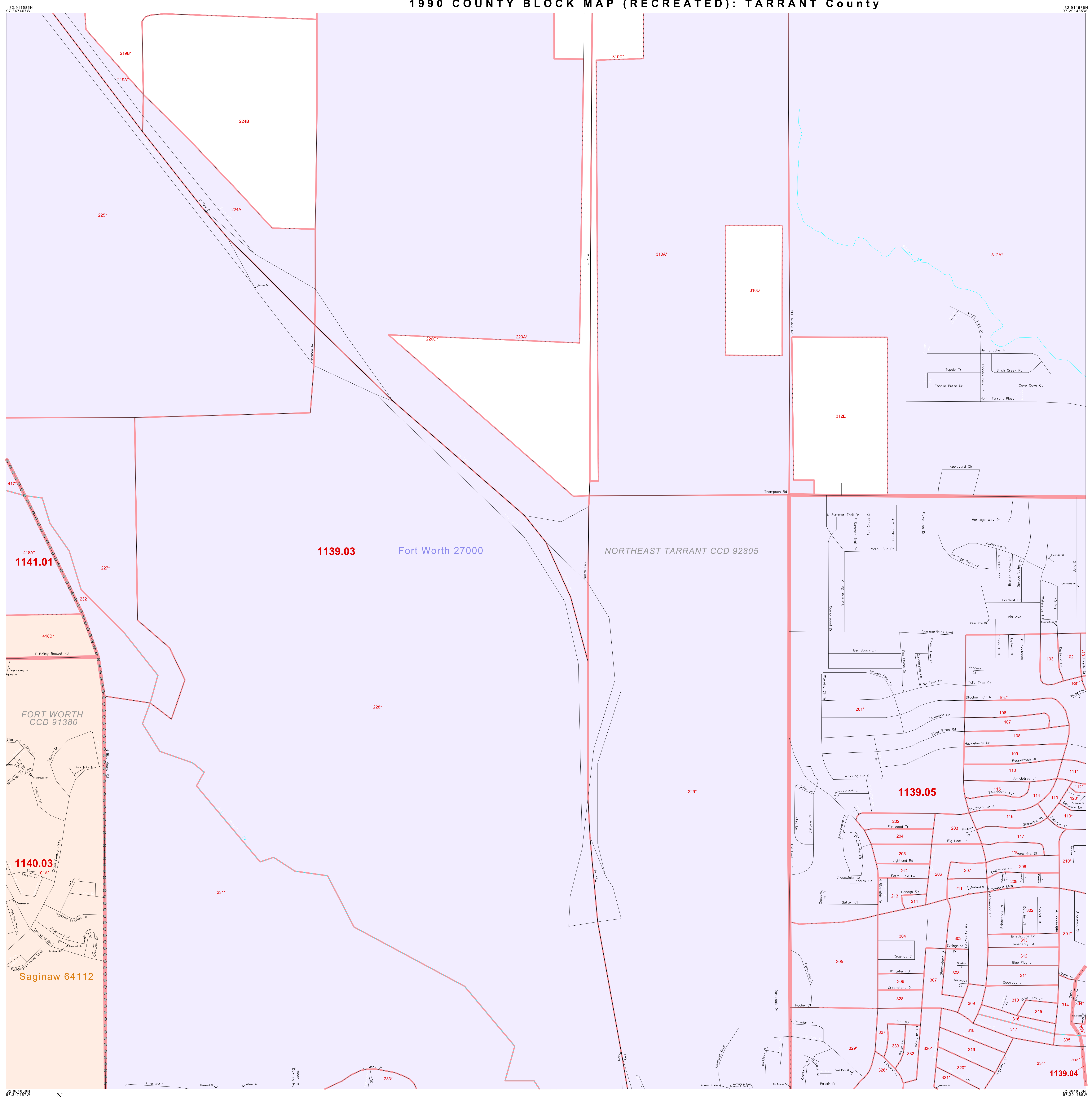


1990 COUNTY BLOCK MAP (RECREATED): TARRANT County



LEGEND

SYMBOL	NAME STYLE
☆☆☆☆	INTERNATIONAL
*****	AIR
◇◇◇◇◇	Trust Land
◇◇◇◇◇	TJSA / TDSA / ANVSA
▽▽▽▽	ANRC
□□□□	MINOR CIVIL DIV ¹ / CCD
□□□□	Place within Subject Entity
□□□□	Incorporated Place / CDP ¹
□□□□	Place outside of Subject Entity
□□□□	Incorporated Place / CDP ¹
—	Census Tract / BNA ²
—	BLOCK ³

ABBREVIATION REFERENCE: AIR = American Indian Reservation; Trust Land = Off-Reservation Trust Land; TDSA = Tribal Designated Statistical Area; ANVSA = Alaska Native Village Statistical Area; ANRC = Alaska Native Regional Corporation; CCD = Census Civil Division; CDP = Census Designated Place; BNA = Block Numbering Area.

FEATURES

Highway	Pipe/Paver Line	Stream/Shoaling
Secondary Road	Ridge/Physical Feature	Intermittent Stream
Deep Trench/Warehouse/Ferry	Property/Fence Line	River
Rollroad	Nonvisible Boundary	Canal

Where international, state, and/or county boundaries coincide, the map shows the boundary symbol for only the highest-ranking of these boundaries.

¹ A "1" following a place name indicates that the place is also a false MCD; the false MCD name is not shown.

² In 1990, the census-of-vessels population of ships at sea was allocated to census tracts with a "SP" suffix. An anchor symbol appeared on the 1990 maps locating a census-of-vessels tract. These maps show a very small area symbolized as a census tract with the census tract number shown near the area.

³ A "1" following a block number indicates that the block number is repeated elsewhere in the block.

32 911596N 97 347467W

32 911596N 97 291485W

32 864685N 97 347467W

32 864685N 97 291485W

Entity Type: County
Name: Tarrant County (439)
ST: Texas (48)

1990 COUNTY BLOCK MAP (RECREATED)
(WRLDK) 1954843023000000000

Key to Adjacent Sheets

14	15	16
24	25	26
34	35	36

SHEET 25 OF 100 PARENT SHEETS
TOTAL SHEETS: 105 (Index 1; Parent 100; Inset 4)

The plotted map scale is 1:7000

All legal boundaries and names are as of January 1, 1990 as tabulated for the Public Law 94-171 and Summary Tape File products. The boundaries also reflect the feature network and coordinates as of the Census 2000 geographic base. Since 1990 the Census Bureau updated the base from the North American Datum of 1927 (NAD27) to the datum as of 1983 (NAD83) and made numerous updates to the base features from those depicted in 1990. The boundaries shown on this map are for the Census Bureau's statistical data collection and tabulation purposes only; their depiction and designation for statistical purposes does not constitute a determination of jurisdictional authority or rights or ownership or entitlement. Source: U.S. Census Bureau's TIGER database (Census 2000) Projection: State-based Albers's Equal Area U.S. DEPARTMENT OF COMMERCE Economics and Statistics Administration U.S. Census Bureau