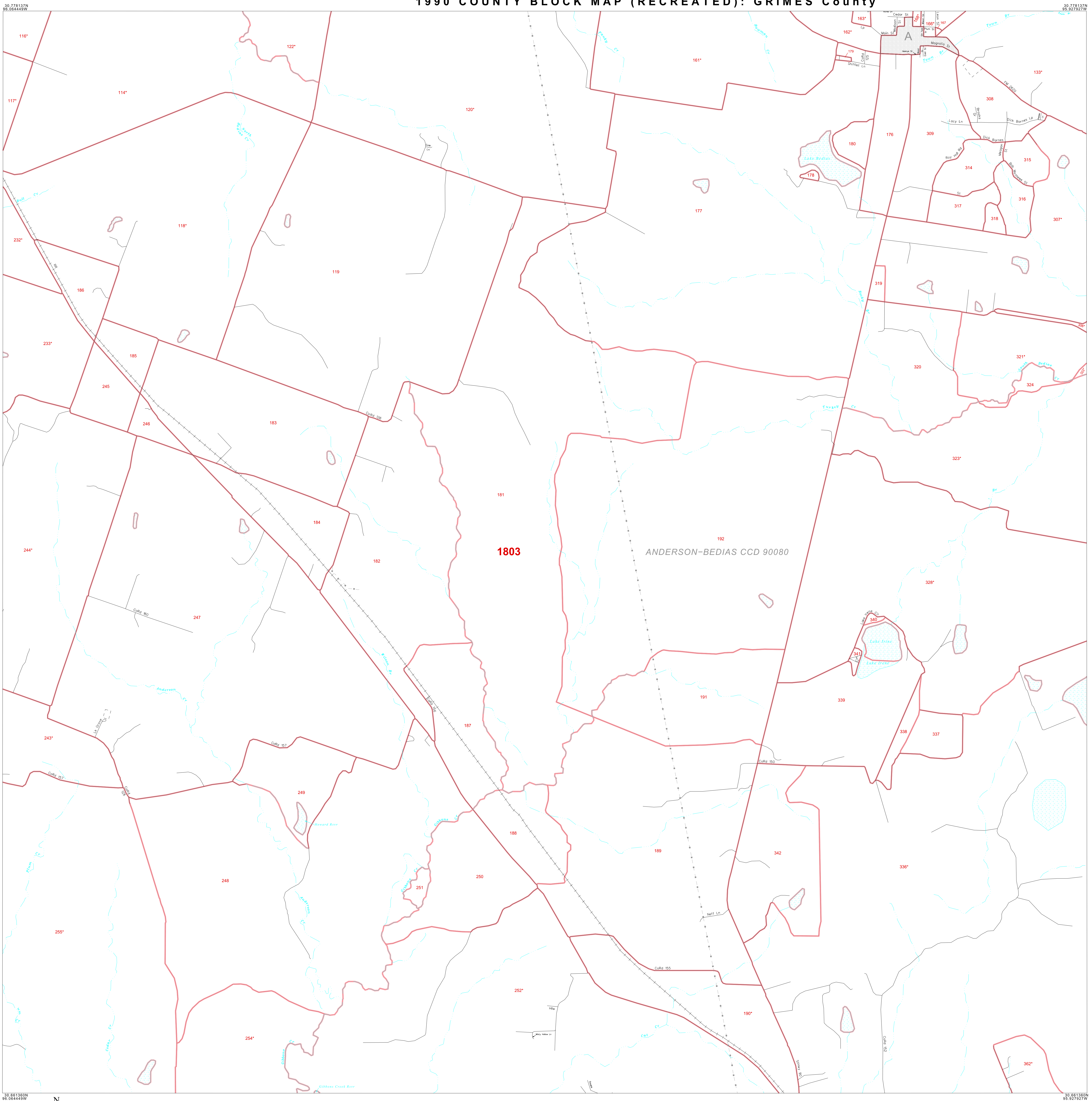


# 1990 COUNTY BLOCK MAP (RECREATED): GRIMES County



### LEGEND

| SYMBOL    | NAME STYLE                            |
|-----------|---------------------------------------|
| ☆ ☆ ☆ ☆ ☆ | INTERNATIONAL                         |
| ☆☆☆☆☆     | AIR                                   |
| ☆☆☆☆☆     | Trust Land                            |
| ☆☆☆☆☆     | TJSA / TDSA / ANVSA                   |
| ▽▽▽▽▽     | ANRC                                  |
| ▨▨▨▨▨     | MINOR CIVIL DIV <sup>1</sup> / CCD    |
| ▨▨▨▨▨     | Place within Subject Entity           |
| ▨▨▨▨▨     | Incorporated Place / CDP <sup>1</sup> |
| ▨▨▨▨▨     | Place outside of Subject Entity       |
| ▨▨▨▨▨     | Incorporated Place / CDP <sup>1</sup> |
| ▨▨▨▨▨     | Census Tract / BNA <sup>2</sup>       |
| ▨▨▨▨▨     | BLOCK <sup>3</sup>                    |

ABBREVIATION REFERENCE: AIR = American Indian Reservation; Trust Land = Off-Reservation Trust Land; TDSA = Tribal Jurisdiction Statistical Area; TJSA = Tribal Designated Statistical Area; ANVSA = Alaska Native Village Statistical Area; ANRC = Alaska Native Regional Corporation; CCD = Census Civil Division; CDP = Census Designated Place; BNA = Block Numbering Area

### FEATURES

|                         |                        |                     |
|-------------------------|------------------------|---------------------|
| Highway                 | Pipe/Paver Line        | Stream/Shoaling     |
| Secondary Road          | Ridge/Physical Feature | Intermittent Stream |
| Leap Trail/Wharve/Ferry | Property/Fence Line    | River               |
| Railroad                | Nonvisible Boundary    | Gravel              |

Where international, state, and/or county boundaries coincide, the map shows the boundary symbol for only the highest-ranking of these boundaries.

<sup>1</sup> A "\*" following a place name indicates that the place is also a false MCD; the false MCD name is not shown.

<sup>2</sup> In 1990, the crew-of-vessel population of ships at sea was allocated to census tracts with a "00" suffix. An anchor symbol appeared on the 1990 maps locating a crew-of-vessel tract. These maps show a very small area symbolized as a census tract with the census tract number shown near the area.

<sup>3</sup> A "\*" following a block number indicates that the block number is repeated elsewhere in the block.

Key to Adjacent Sheets

|   |   |   |
|---|---|---|
| 1 | 2 | 3 |
| 4 | 5 | 6 |
| 7 | 8 | 9 |

Sheet Location within Entity

SHEET 5 OF 18 PARENT SHEETS  
TOTAL SHEETS: 23 (Index 1; Parent 18; Inset 4)