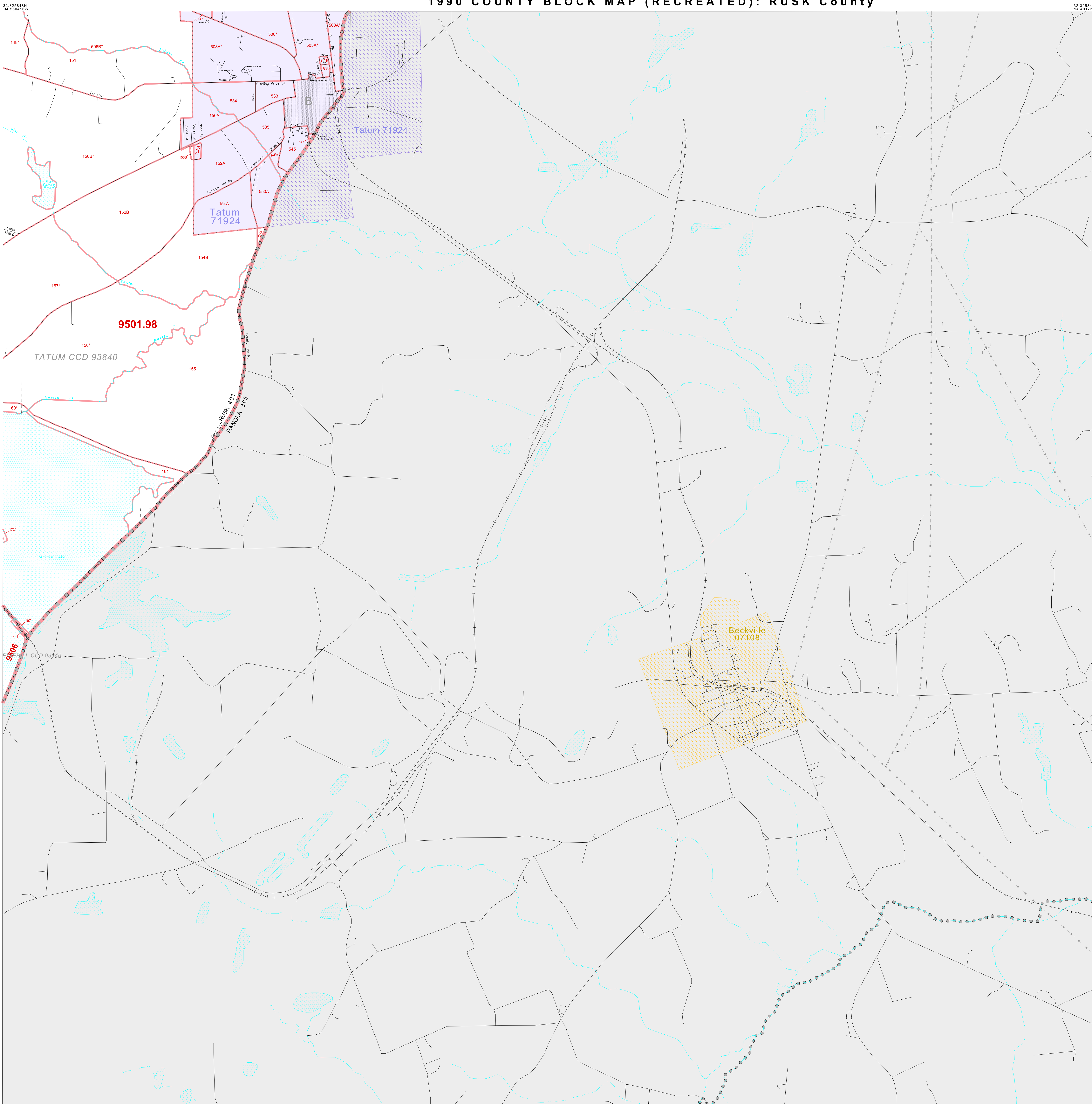


1990 COUNTY BLOCK MAP (RECREATED): RUSK County



**LEGEND**

|                                 |                                       |
|---------------------------------|---------------------------------------|
| <b>SYMBOL</b>                   | <b>NAME STYLE</b>                     |
| *****                           | INTERNATIONAL                         |
| *****                           | AIR                                   |
| *****                           | Trust Land                            |
| *****                           | TJSA / TDSA / ANVSA                   |
| *****                           | ANRC                                  |
|                                 | MINOR CIVIL DIV' / CCD                |
| Place within Subject Entity     | Incorporated Place / CDP <sup>1</sup> |
| Place outside of Subject Entity | Incorporated Place / CDP <sup>1</sup> |
| —                               | Census Tract / BNA <sup>2</sup>       |
| —                               | BLOCK <sup>3</sup>                    |

**ABBREVIATION REFERENCE:** AIR = American Indian Reservation; Trust Land = Off-Reservation Trust Land; TDSA = Tribal Jurisdiction Statistical Area; TJSA = Tribal Designated Statistical Area; ANVSA = Alaska Native Village Statistical Area; ANRC = Alaska Native Regional Corporation; CCD = Census Civil Division; CDP = Census Designated Place; BNA = Block Numbering Area

**FEATURES**

|                         |                        |                     |
|-------------------------|------------------------|---------------------|
| Highway                 | Pipe/Pipe Line         | Stream/Shoaling     |
| Secondary Road          | Ridge/Physical Feature | Intermittent Stream |
| Deep Trench/Wharf/Ferry | Property/Fence Line    | River               |
| Railroad                | Nonvisible Boundary    | Cleaver             |

Where international, state, and/or county boundaries coincide, the map shows the boundary symbol for only the highest-ranking of these boundaries.

<sup>1</sup> A "\*" following a place name indicates that the place is also a false MCD; the false MCD name is not shown.

<sup>2</sup> In 1990, the census-of-vessels population of ships at sea was allocated to census tracts with a "0P" suffix. An anchor symbol appeared on the 1990 maps locating a census-of-vessels tract. These maps show a very small area symbolized as a census tract with the census tract number shown near the area.

<sup>3</sup> A "\*" following a block number indicates that the block number is repeated elsewhere in the block.

Key to Adjacent Sheets

|    |   |
|----|---|
| 3  | 4 |
| 7  | 8 |
| 11 |   |

Sheet Location within Entity

SHEET 8 OF 19 PARENT SHEETS  
TOTAL SHEETS: 26 (Index 1; Parent 19; Inset 6)