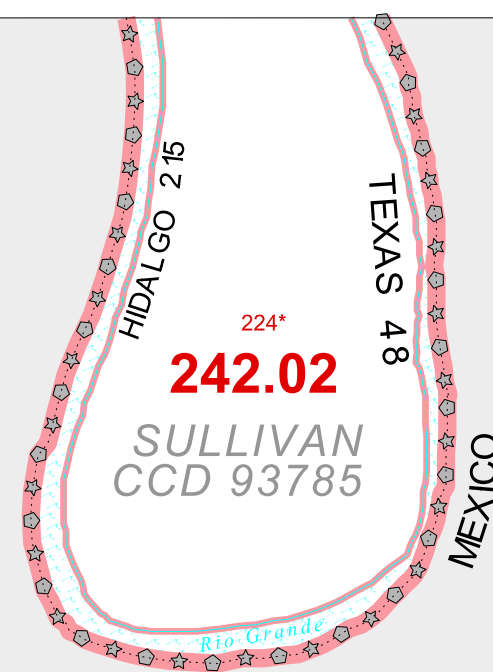


1990 COUNTY BLOCK MAP (RECREATED): HIDALGO County

26 208934N  
98 523174W

26 208934N  
98 448432W

SULLIVAN CCD 93785  
242.02



LEGEND

SYMBOL	NAME STYLE
*****	INTERNATIONAL
*****	AIR
*****	Trust Land
*****	TJSA / TDSA / ANVSA
*****	ANRC
//////	MINOR CIVIL DIV' / CCD
Place within Subject Entity	Incorporated Place / CDP <sup>1</sup>
Place outside of Subject Entity	Incorporated Place / CDP <sup>1</sup>
—————	Census Tract / BNA <sup>2</sup>
—————	Block <sup>3</sup>

ABBREVIATION REFERENCE: AIR = American Indian Reservation;  
Trust Land = Off-Reservation Trust Land; TDSA = Tribal Jurisdiction  
Statistical Area; TDSA = Tribal Designated Statistical Area;  
ANVSA = Alaska Native Village Statistical Area; ANRC = Alaska Native  
Regional Corporation; CCD = Census Civil Division;  
CDP = Census Designated Place; BNA = Block Numbering Area

FEATURES

Highway	Pipe/Paver Line	Stream/Shoaling
Secondary Road	Ridge/Physical Feature	Intermittent Stream
Deep Trench/Wharf/Ferry	Property/Fence Line	River
Railroad	Nonvisible Boundary	Coastline
—————	—————	—————
Inset	Out Area	

Where international, state, and/or county boundaries coincide, the map shows  
the boundary symbol for only the highest-ranking of these boundaries.

<sup>1</sup> A "\*" following a place name indicates that the place is also a false MCD;  
the false MCD name is not shown.

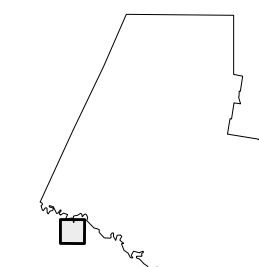
<sup>2</sup> In 1990, the crews-of-vessel population of ships at sea was allocated to  
census tracts with a "CV" suffix. An anchor symbol appeared on the 1990  
maps locating a crews-of-vessel tract. These maps show a very small area  
symbolized as a census tract with the census tract number shown near the  
area.

<sup>3</sup> A "\*" following a block number indicates that the block number is repeated  
elsewhere in the block.

Key to Adjacent Sheets

64	65	66
	74	75

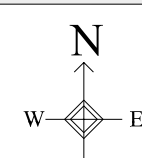
Sheet Location within Entity



SHEET 74 OF 95 PARENT SHEETS  
TOTAL SHEETS: 113 (Index 1; Parent 95; Inset 17)

26 141050N  
98 523174W

26 141050N  
98 448432W



All legal boundaries and names are as of January 1, 1990 as tabulated for the Public Law 94-171 and Summary Tape File  
products. The boundaries also reflect the feature network and coordinates as of the Census 2000 geographic base. Since  
1990 the Census Bureau updated the base from the North American Datum of 1927 (NAD27) to the datum as of 1983 (NAD83)  
and made numerous updates to the base features from those depicted in 1990. The boundaries shown on this map are for  
the Census Bureau's statistical data collection and tabulation purposes only; their depiction and designation for  
statistical purposes does not constitute a determination of jurisdictional authority or rights or ownership or entitlement.  
Source: U.S. Census Bureau's TIGER database (Census 2000) Projection: State-based Albers's Equal Area  
U.S. DEPARTMENT OF COMMERCE Economics and Statistics Administration U.S. Census Bureau

ENTITY TYPE: County  
NAME: Hidalgo County (215)  
ST: Texas (48)

