

# CENSUS 2000 BLOCK MAP: HUNT County

### LEGEND

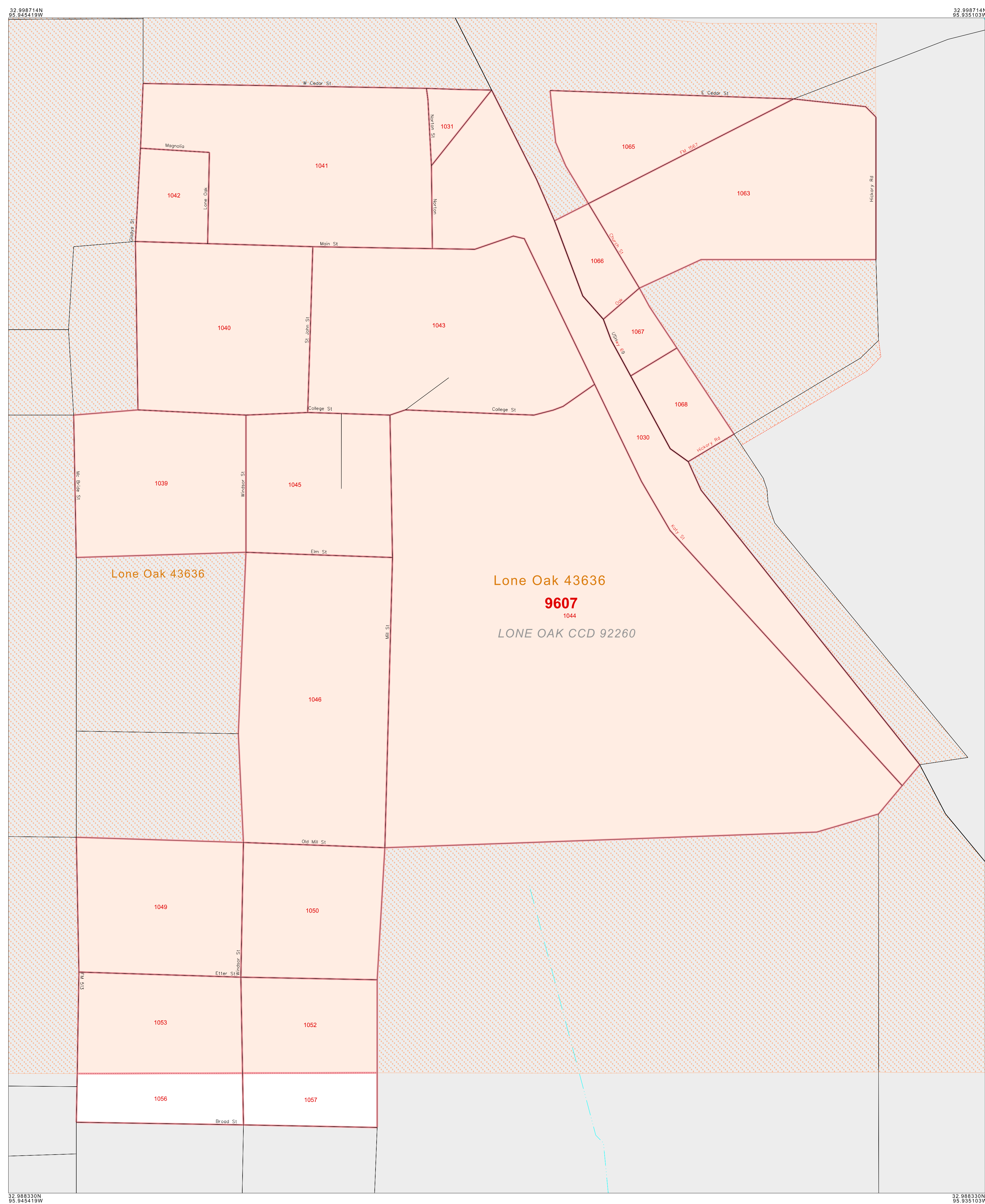
SYMBOL	NAME STYLE
*****	INTERNATIONAL
*****	AIR (FEDERAL)
*****	Trust Land / Home Land
*****	OTSA / TDSA / ANVSA
*****	AMERICAN INDIAN TRIBAL SUBDIVISION
//////	AIR (State)
◇◇◇◇◇	SDAISA
▽▽▽▽▽	ANRC
//////	STATE (or statistically equivalent entity)
□□□□□	COUNTY (or statistically equivalent entity)
○	MINOR CIVIL DIV. / CCD <sup>1</sup>
○	Consolidated City
○	Place within Subject Entity
○	Incorporated Place / CDP <sup>1</sup>
○	Place outside of Subject Entity
○	Incorporated Place / CDP <sup>1</sup>
---	Corporate Offset Boundary
---	<b>Census Tract</b>
---	<b>Block<sup>2</sup></b>

ABBREVIATION REFERENCE: AIR = American Indian Reservation; Trust Land = Off-Reservation Trust Land; Home Land = Hawaiian Home Land; OTSA = Oklahoma Tribal Statistical Area; TDSA = Tribal Designated Statistical Area; ANVSA = Alaska Native Village Statistical Area; SDAISA = State Designated American Indian Statistical Area; ANRC = Alaska Native Regional Corporation; CDP = Census Designated Place; Minor Civil Div. (MCD) = Minor Civil Division; CCD = Census County Division

#### FEATURES

Highway	Pipe/Power Line	Stream/Shoreline
Secondary Road	Ridge/Physical Feature	Intermittent Stream
Levee/Canal/Dike	Property/Fence Line	River/Lake
Railroad	Nonvisible Boundary	Glacier

Where international, state, and/or county boundaries coincide, the map shows the boundary symbol for only the highest-ranking of these boundaries.  
<sup>1</sup> A " " following a place name indicates that the place is coterminous with a MCD. A " " indicates that the place is also a false MCD; the false MCD name is not shown.  
<sup>2</sup> A " " following a block number indicates that the block number is repeated elsewhere in the block.



32 988714N  
95 945419W

32 988330N  
95 945419W

100 0 100 yd

100 0 100 m

The plotted map scale is 1:2000

32 988714N  
95 945419W

32 988330N  
95 945419W

ENTITY TYPE: County  
 NAME: Hunt County (231)  
 ST: Texas (48)

CENSUS 2000 BLOCK MAP

(2RGUCU) 21423173010000000

Key to Adjacent Sheets

		101		

Sheet Location within Entity

INSET SHEET 101 of 101  
 TOTAL SHEETS: 39 (Index 1; Parent 23; Inset 15)

All legal boundaries and names are as of January 1, 2000. The boundaries shown on this map are for Census Bureau statistical data collection and tabulation purposes only; their depiction and designation for statistical purposes does not constitute a determination of jurisdictional authority or rights of ownership or entitlement. Source: U.S. Census Bureau's TIGER database (Census 2000) Projection: State-based Albers' Equal Area U.S. DEPARTMENT OF COMMERCE Economics and Statistics Administration U.S. Census Bureau