

CENSUS 2000 BLOCK MAP: HAYS County

SYMBOL

NAME STYLE

\*\*\*\*\*

INTERNATIONAL

\*\*\*\*\*

AIR (FEDERAL)

\*\*\*\*\*

Trust Land / Home Land

\*\*\*\*\*

OTSA / TDSA / ANVSA

\*\*\*\*\*

AMERICAN INDIAN TRIBAL SUBDIVISION

///////

AIR (State)

◇◇◇◇◇

SDA/ISA

▽△▽△▽△

ANRC

///////

STATE (or statistically equivalent entity)

■■■■■

COUNTY (or statistically equivalent entity)

●●●●●

MINOR CIVIL DIV. / CCD<sup>1</sup>

○●○●○

Consolidated City

Place within Subject Entity

Incorporated Place / CDP<sup>1</sup>

Place outside of Subject Entity

Incorporated Place / CDP<sup>1</sup>

Corporate Offset Boundary

Census Tract

BLOCK<sup>2</sup>

ABBREVIATION REFERENCE: AIR = American Indian Reservation; Trust Land = Off-Reservation Trust Land; Home Land = Hawaiian Home Land; OTSA = Oklahoma Tribal Statistical Area; TDSA = Tribal Designated Statistical Area; ANVSA = Alaska Native Village Statistical Area; SDA/ISA = State Designated American Indian Statistical Area; ANRC = Alaska Native Regional Corporation; CDP = Census Designated Place; Minor Civil Div. (MCD) = Minor Civil Division; CCD = Census County Division

Highway

Pipe/Power Line

Secondary Road

Jeep Trail/Pathway/Ferry

Railroad

Property/Fence Line

Nonvisible Boundary

Stream/Shoreline

Intermittent Stream

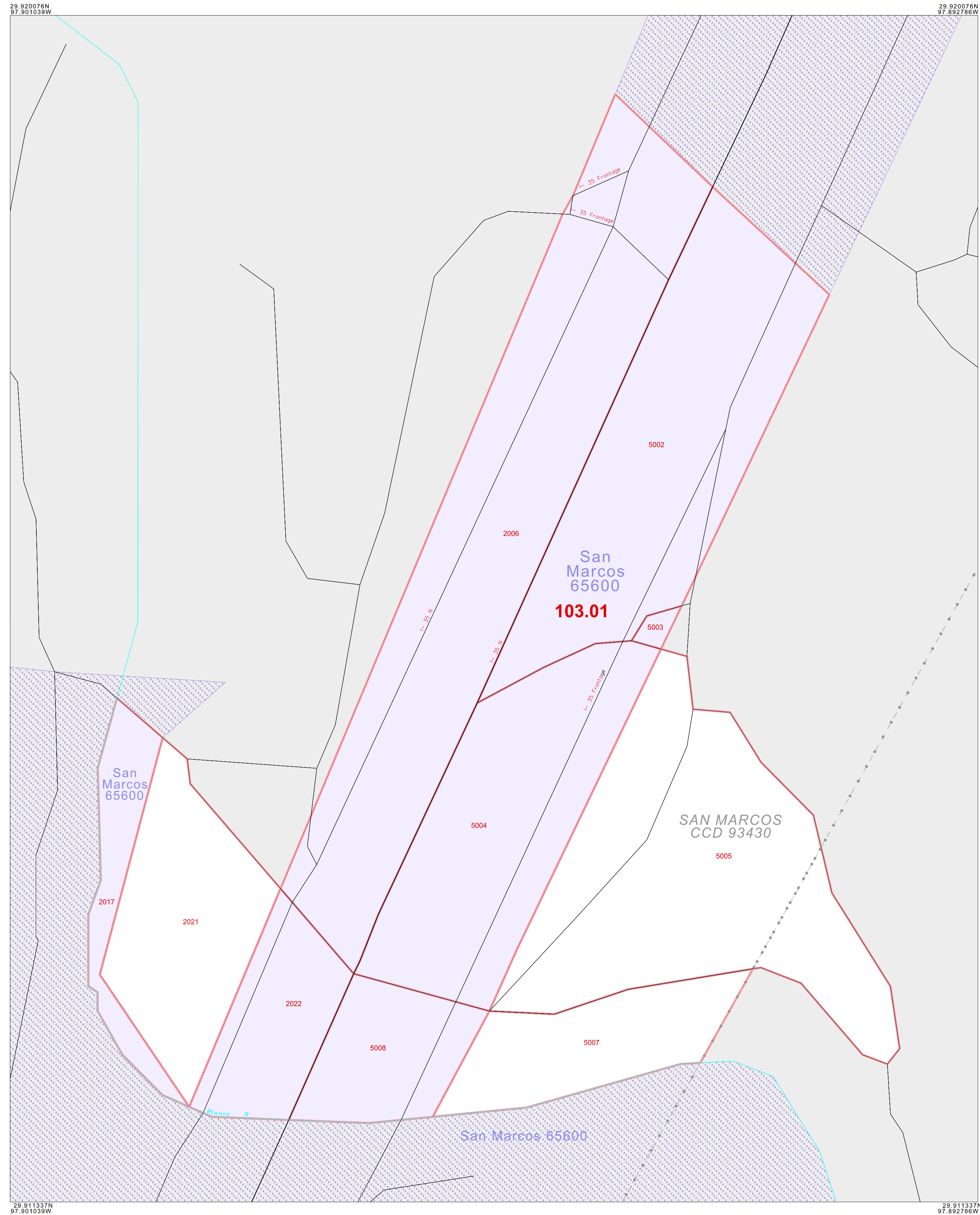
River/Lake

Glaacier

Inset

Out Area

Where international, state, and/or county boundaries coincide, the map shows the boundary symbol for only the highest-ranking of these boundaries.  
<sup>1</sup> A " " following a place name indicates that the place is coterminous with a MCD. A " " indicates that the place is also a false MCD; the false MCD name is not shown.  
<sup>2</sup> A " " following a block number indicates that the block number is repeated elsewhere in the block.



All legal boundaries and names are as of January 1, 2000. The boundaries shown on this map are for Census Bureau statistical data collection and tabulation purposes only; their depiction and designation for statistical purposes does not constitute a determination of jurisdictional authority or rights of ownership or entitlement. Source: U.S. Census Bureau's TIGER database (Census 2000) Projection: State-based Albers Equal Area U.S. DEPARTMENT OF COMMERCE Economics and Statistics Administration U.S. Census Bureau

ENTITY TYPE: County  
NAME: Hays County (209)  
ST: Texas (48)

