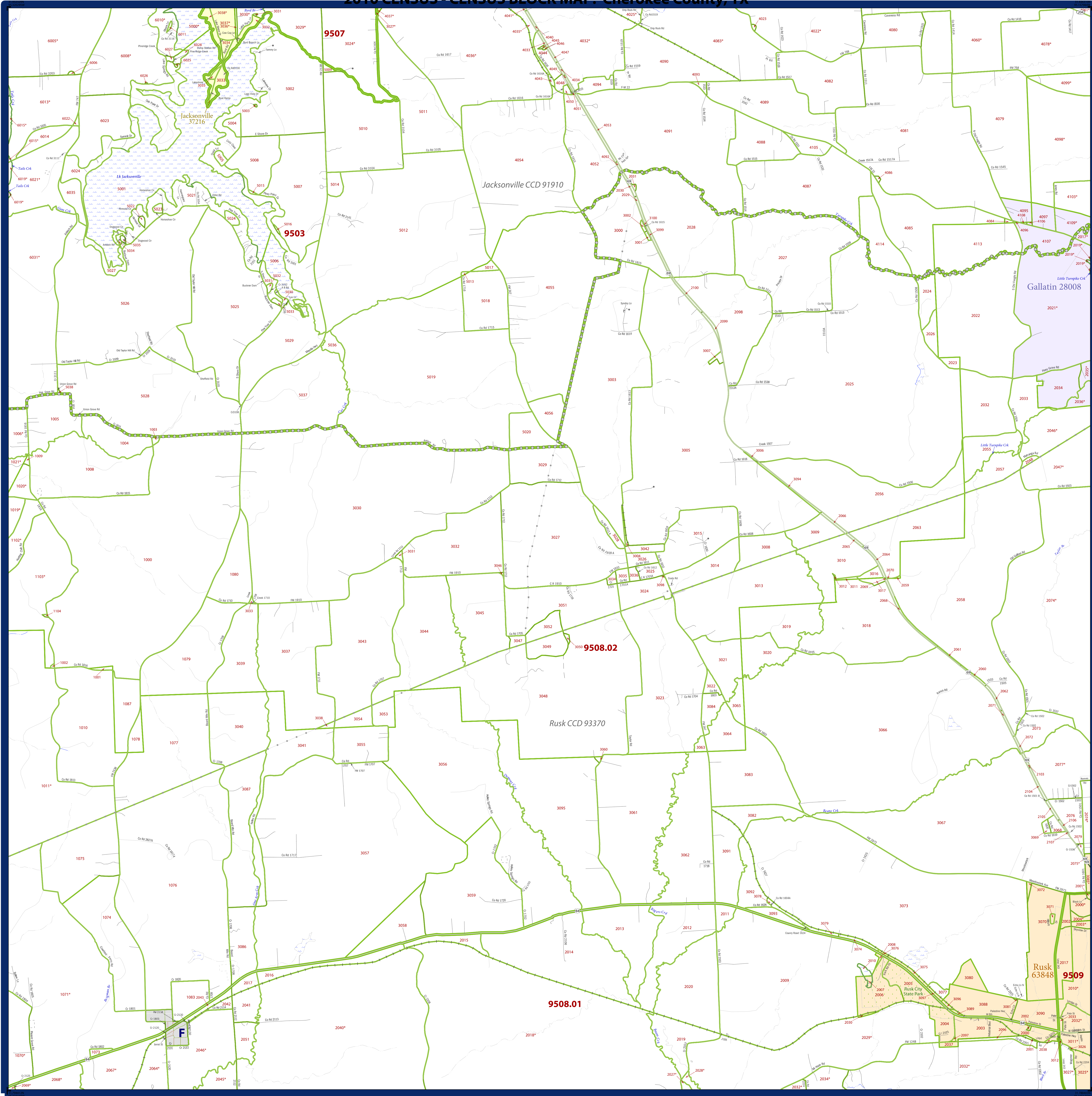


2010 CENSUS - CENSUS BLOCK MAP: Cherokee County, TX



LEGEND

SYMBOL DESCRIPTION	SYMBOL	SYMBOL	SYMBOL
International	☆☆☆☆	Geographic Offset or Corridor	—
Federal American Indian Reservation	★ ★ ★ ★ ★	Water Body	—
Off-Reservation Trust Land, Hawaiian Home Land	+ + + + +	Swamp, Marsh, or Gravel Pit/Quarry	—
State American Indian Reservation	◆ ◆ ◆ ◆ ◆	Glacier	—
State Designated Tribal Statistical Area	◆ ◆ ◆ ◆ ◆	Military	—
Alaska Native Regional Corporation	▲ ▲ ▲ ▲ ▲	National or State Park, Forest, or Recreation Area	—
State (or statistically equivalent entity)	▨ ▨ ▨ ▨ ▨	Airport	—
County (or statistically equivalent entity)	▣ ▣ ▣ ▣ ▣	Property Line	—
Minor Civil Division (MCD)	○ ○ ○ ○ ○	Perennial Stream	—
Consolidated City	○ ○ ○ ○ ○	Intermittent Stream	—
Incorporated Place ^{1,2}	Color Swatch	Nonvisible Boundary or Feature Not Elsewhere Classified	—
Census Designated Place (CDP) ²	Color Swatch		
Census Tract	Color Swatch		
Census Block ³	Color Swatch		

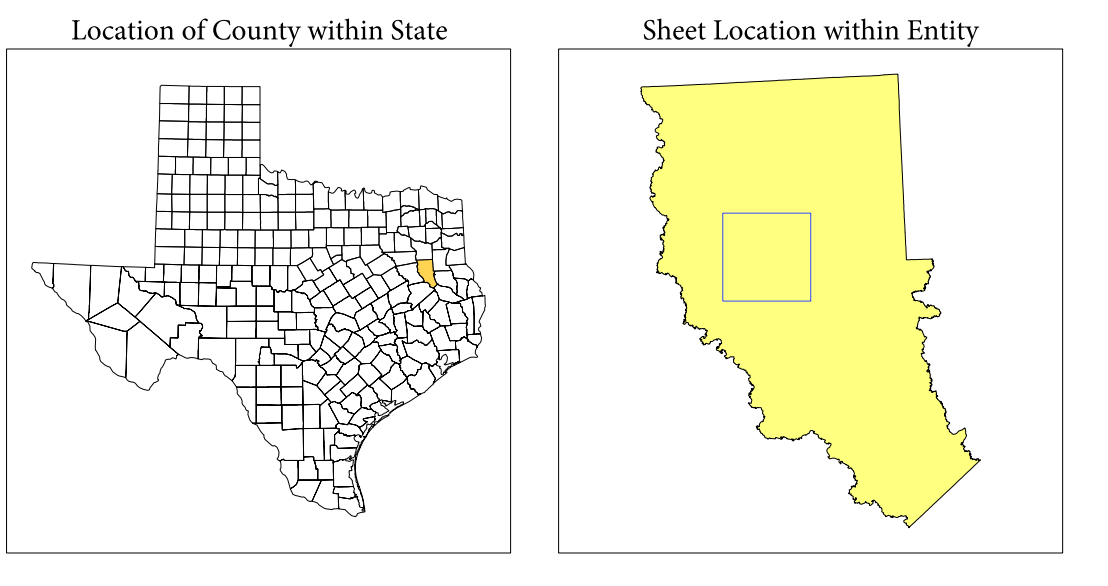
DESCRIPTION	SYMBOL	DESCRIPTION	SYMBOL
Interstate	—	Geographic Offset or Corridor	—
U.S. Highway	—	Water Body	—
State Highway	—	Swamp, Marsh, or Gravel Pit/Quarry	—
Other Road	—	Glacier	—
Cul-de-sac	—	Military	—
Circle	—	National or State Park, Forest, or Recreation Area	—
4WDs Trail, Stairway, Alley, Walkway, or Ferry	—	Airport	—
Railroad	—	Property Line	—
Pipeline or Power Line	—	Perennial Stream	—
Ridge or Fence	—	Intermittent Stream	—
Property Line	—	Nonvisible Boundary or Feature Not Elsewhere Classified	—
Perennial Stream	—		
Intermittent Stream	—		

Where state, county, and/or MCD/CCD boundaries coincide, the map shows the boundary symbol for only the highest-ranking of these boundaries. Where American Indian reservation and American Indian tribal subdivision boundaries coincide, the map shows only the American Indian reservation boundaries. Where Oklahoma tribal statistical area boundaries and American Indian tribal subdivision boundaries coincide, the map shows only the Oklahoma tribal subdivision area boundaries.

1 A * following an MCD name denotes a false MCD. A * following a place name indicates that a false MCD exists with the same name and FIPS code as the place; the false MCD label is not shown.

2 Place label color correlates to the place fill color.

3 A * following a block number indicates that the block number is repeated elsewhere in the block.



All legal boundaries and names are as of January 1, 2010. The boundaries shown on this map are for Census Bureau's statistical data collection and tabulation purposes only; their depiction and designation for statistical purposes does not constitute a determination of jurisdictional authority or rights of ownership or entitlement.

Geographic Vintage: 2010 Census (reference date: January 1, 2010)
 Data Source: U.S. Census Bureau's MAI/TIGER database (TAB100148)
 Map Created by Geography Division: April 15, 2011

U.S. DEPARTMENT OF COMMERCE Economics and Statistics Administration U.S. Census Bureau

Projection: Albers Equal Area Conic
 Datum: NAD83
 Spheroid: GRS 80
 1st Standard Parallel: 27 36 51
 2nd Standard Parallel: 34 43 24
 Central Meridian: -100 04 35
 Latitude of Projection's Origin: 25 50 13
 False Easting: 0
 False Northing: 0

Scale: 1:250,000

USCENSUSBUREAU

Key to Sheets

5	6	7
9	10	11
13	14	15

PARENT SHEET 10
 Total Sheets: 32
 Index Sheets: 1
 Parent Sheets: 21
 Inset Sheets: 10

NAME: Cherokee County (073)
 ENTITY TYPE: County or statistically equivalent entity
 ST: Texas (48)

Geographic Unit (GU) Block Map Series
 2010 CENSUS BLOCK MAP (PARENT) - County
 21064821010