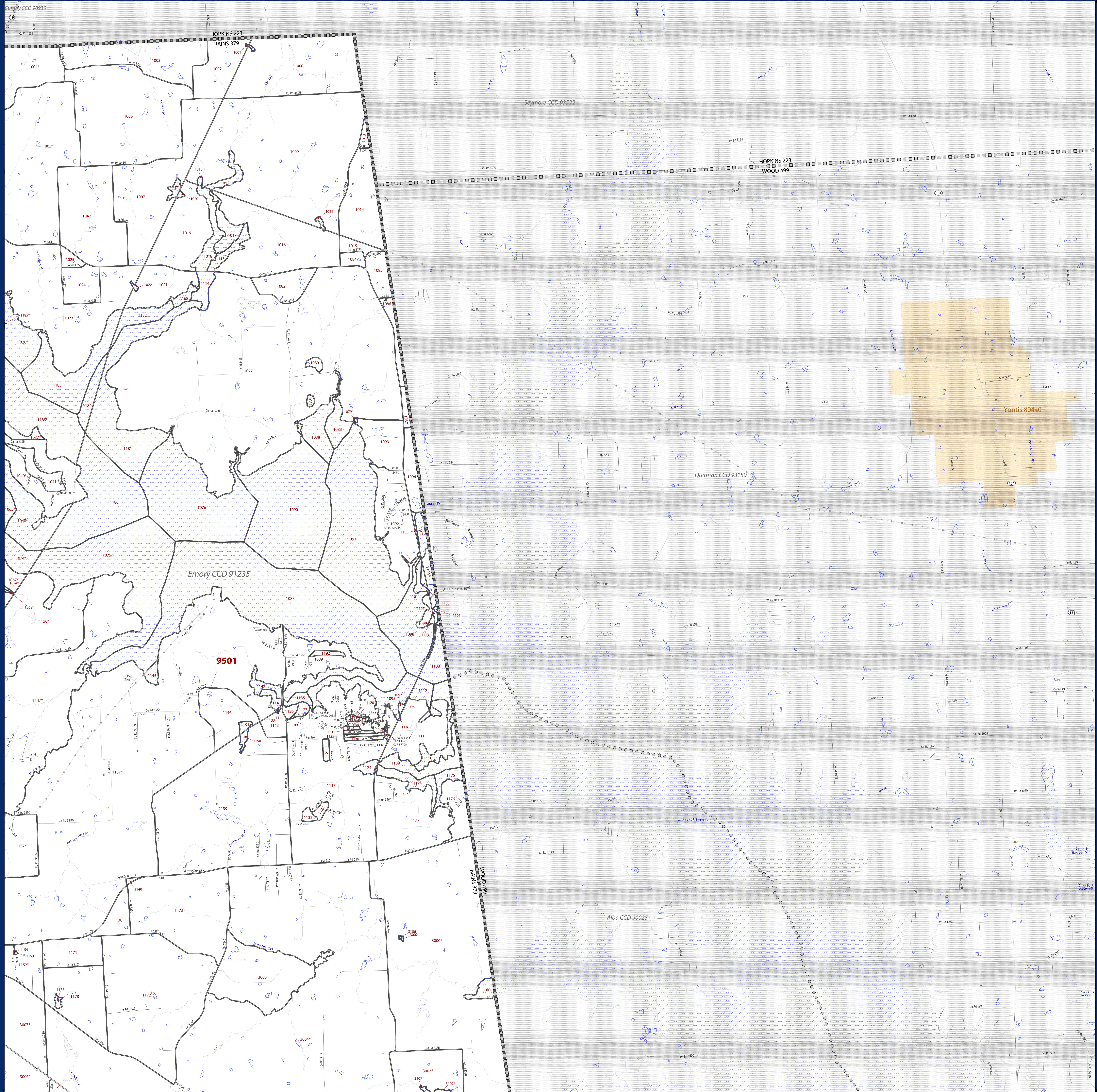


# 2010 CENSUS - CENSUS BLOCK MAP: Rains County, TX



### LEGEND

SYMBOL DESCRIPTION	SYMBOL	LABEL STYLE
International	☆☆☆☆☆	CANADA
Federal American Indian Reservation	★ ★ ★ ★ ★	L'ANSE RESV N 1880
Off Reservation Trust Land, Hawaiian Home Land	+ + + + +	T1880
Oklahoma Tribal Statistical Area, Alaska Native Village Statistical Area, Tribal Designated Statistical Area	◆ ◆ ◆ ◆ ◆	KAW OTSA 5690
American Indian Tribal Subdivision	● ● ● ● ●	EAGLE NEST DIST 200
State American Indian Reservation	//// ////	Tama Resv n 9400
State Designated Tribal Statistical Area	◆ ◆ ◆ ◆ ◆	Lumbee SDTSA 9815
Alaska Native Regional Corporation	▼ ▼ ▼ ▼ ▼	NANA ANRC 52120
State (or statistically equivalent entity)		NEW YORK 36
County (or statistically equivalent entity)	□ □ □ □ □	MONTGOMERY 031
Minor Civil Division (MCD)	○ ○ ○ ○ ○	Bristol town 07485
Consolidated City	○ ○ ○ ○ ○	Hanna CCD 91650
Incorporated Place <sup>1,2</sup>	Colorful Box	MILFORD 47500
Census Designated Place (CDP) <sup>2</sup>	Colorful Box	Davis 18100
Census Tract	Colorful Box	Incline Village 35100
Census Block <sup>3</sup>	Colorful Box	33.07

DESCRIPTION	SYMBOL	DESCRIPTION	SYMBOL
Interstate	Blue Line with Red Border	Geographic Offset or Corridor	Red Line
U.S. Highway	Blue Line with Yellow Border	Water Body	Blue Area
State Highway	Blue Line with White Border	Swamp, Marsh, or Gravel Pit/Quarry	Blue Area with Dotted Pattern
Other Road	Blue Line	Glacier	Blue Area with Horizontal Lines
Cul-de-sac	Blue Line with T-junction	Military	Blue Area with Vertical Lines
Circle	Blue Line with Circle	National or State Park, Forest, or Recreation Area	Green Area
4WD Trail, Stamen, Alley, Walkway, or Ferry	Blue Line with Dashed Border	Airport	Blue Area with Runway
Railroad	Blue Line with Cross-ticks	Selected Mountain Peaks	Black Triangle
Pipeline or Power Line	Blue Line with Dashed Border	Island Name	Black Triangle
Ridge or Fence	Blue Line with Dashed Border	Inset Area	Black Triangle
Property Line	Blue Line with Dashed Border	Outside Subject Area	Black Triangle
Perennial Stream	Blue Line with Wavy Border		
Intermittent Stream	Blue Line with Dashed Border		
Non-visible Boundary or Feature Not Elsewhere Classified	Blue Line with Dashed Border		

Where state, county, and/or MCD/CCD boundaries coincide, the map shows the boundary symbol for only the highest-ranking of these boundaries. Where American Indian reservation and American Indian tribal subdivision boundaries coincide, the map shows only the American Indian reservation boundaries. Where Oklahoma tribal statistical area boundaries and American Indian tribal subdivision boundaries coincide, the map shows only the Oklahoma tribal statistical area boundaries.

1 A \* following an MCD name denotes a false MCD. A \* following a place name indicates that a false MCD exists with the same name and FIPS code as the place; the false MCD label is not shown.

2 Place label color correlates to the place fill color.

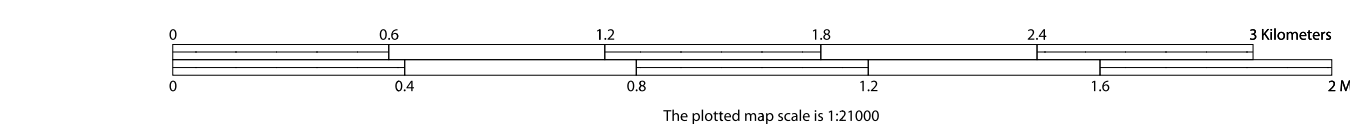
3 A \* following a block number indicates that the block number is repeated elsewhere in the block.

All legal boundaries and names are as of January 1, 2010. The boundaries shown on this map are for Census Bureau statistical data collection and tabulation purposes only; their depiction and designation for statistical purposes does not constitute a determination of jurisdictional authority or rights of ownership or entitlement.

Geographic Vintage: 2010 Census (reference date: January 1, 2010)  
 Data Source: U.S. Census Bureau's MAI/7IGIG database (TAB100148)  
 Map Created by Geography Division: April 15, 2011

U.S. DEPARTMENT OF COMMERCE Economics and Statistics Administration U.S. Census Bureau

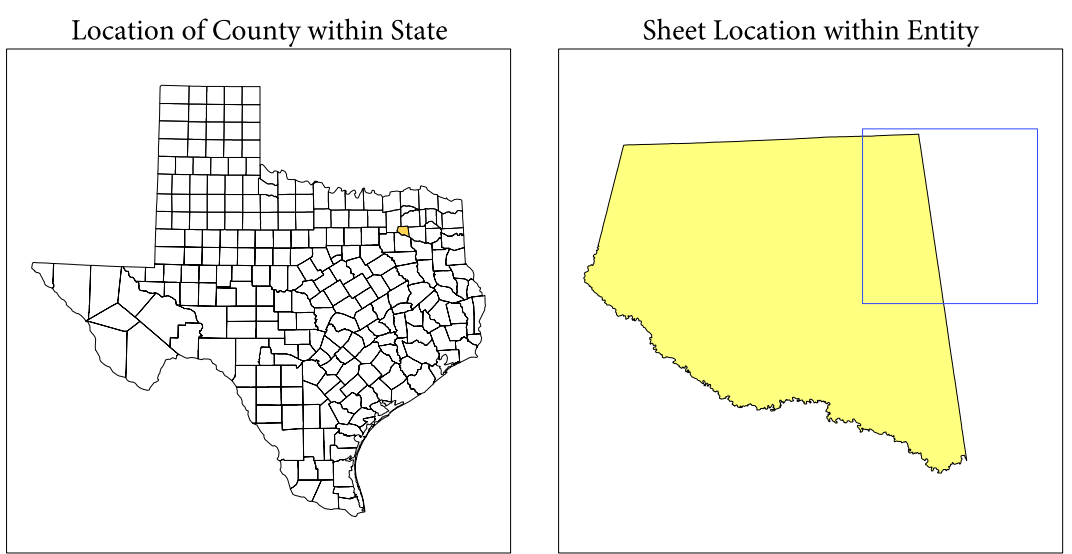
Projection: Albers Equal Area Conic  
 Datum: NAD83  
 Spheroid: GRS 80  
 1st Standard Parallel: 27 36 51  
 2nd Standard Parallel: 34 43 24  
 Central Meridian: -100 04 35  
 Latitude of Projection's Origin: 25 50 13  
 False Easting: 0  
 False Northing: 0



Key to Sheets

2	3
5	6

PARENT SHEET 3  
 Total Sheets: 10  
 Index Sheets: 1  
 Parent Sheets: 6  
 Inset Sheets: 3



NAME: Rains County (379)  
 ENTITY TYPE: County or statistically equivalent entity  
 ST: Texas (48)