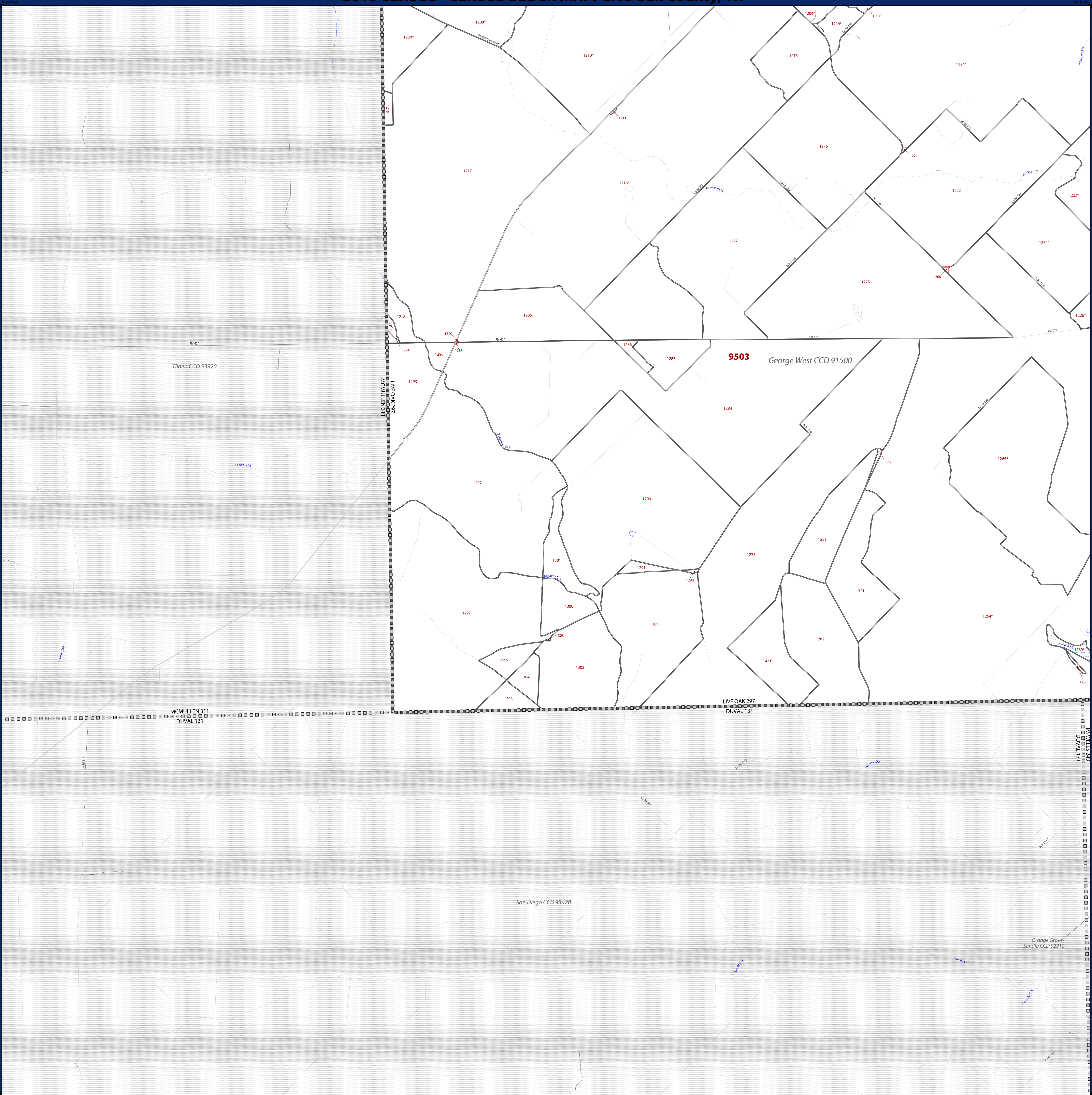


**2010 CENSUS - CENSUS BLOCK MAP: Live Oak County, TX**



LEGEND		
SYMBOL DESCRIPTION	SYMBOL	LABEL STYLE
International	☆☆☆☆☆	CANADA
Federal American Indian Reservation	*****	L'ANSE RESV N 1880
Off Reservation Trust Land, Hawaiian Home Land	+++++	T1880
Alaska Native Regional Corporation, Tribal Designated Statistical Area	♦♦♦♦♦	KAW OTSA 5690
Alaska Native Regional Corporation, Tribal Designated Statistical Area	*****	EAGLE NEST DIST 200
State American Indian Reservation	//////	Tama Resv 9400
State Designated Tribal Statistical Area	♦♦♦♦♦	Lumbee SDTSA 9815
Alaska Native Regional Corporation	▽▽▽▽▽	NANA ANRC 52120
State (or statistically equivalent entity)		NEW YORK 36
County (or statistically equivalent entity)		MONTGOMERY 031
Minor Civil Division (MCD)	○○○○○	Bristol town 07485
Census County Division (CCD), Census Subarea (CSA), Unincorporated Territory (UT)	○○○○○	Hanna CCD 91650
Consolidated City	○○○○○	MILFORD 47500
Incorporated Place <sup>1,2</sup>	Color Swatch	Davis 18100
Census Designated Place (CDP) <sup>2</sup>	Color Swatch	Incline Village 35100
Census Tract	Color Swatch	<b>33.07</b>
Census Block <sup>3</sup>	Color Swatch	3012

DESCRIPTION	SYMBOL	DESCRIPTION	SYMBOL
Interstate	Blue line with shield	Geographic Offset or Corridor	Grey dashed line
U.S. Highway	Black line with shield	Water Body	Blue wavy line
State Highway	Black line with shield	Swamp, Marsh, or Gravel Pit/Quarry	Blue hatched area
Other Road	Black line with 'R' shield	Glacier	Blue hatched area
Cul-de-sac	Black line with arrow	Military	Black dashed line
Circle	Black circle	National or State Park, Forest, or Recreation Area	Green hatched area
4WD Trail, Stunway, Alley, Walkway, or Ferry	Dashed line	Airport	Black rectangle with 'A' symbol
Railroad	Black line with cross-ticks	Selected Mountain Peaks	Black triangle
Pipeline or Power Line	Black line with cross-ticks	Island Name	DEER IS
Ridge or Fence	Dashed line	Inset Area	Grey rectangle
Property Line	Dashed line	Outside Subject Area	Grey rectangle
Perennial Stream	Blue line		
Intermittent Stream or Feature Not Elsewhere Classified	Dashed blue line		

Where state, county, and/or MCD/CCD boundaries coincide, the map shows the boundary symbol for only the highest-ranking of these boundaries. Where American Indian reservation and American Indian tribal subdivision boundaries coincide, the map shows only the American Indian reservation boundaries. Where Oklahoma tribal statistical area boundaries and American Indian tribal subdivision boundaries coincide, the map shows only the Oklahoma tribal statistical area boundaries.

1 A "\*" following an MCD name denotes a false MCD. A "" following a place name indicates that a false MCD exists with the same name and FIPS code as the place; the false MCD label is not shown.

2 Place label color correlates to the place fill color.

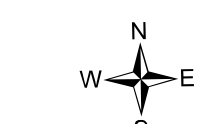
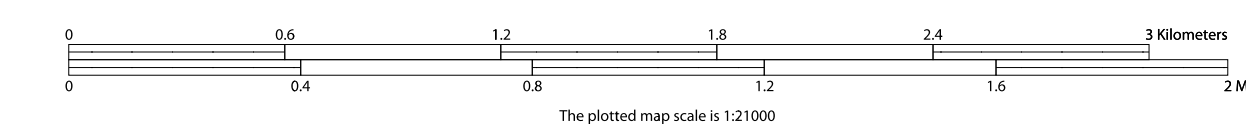
3 A "\*" following a block number indicates that the block number is repeated elsewhere in the block.

All legal boundaries and names are as of January 1, 2010. The boundaries shown on this map are for Census Bureau statistical data collection and tabulation purposes only; their depiction and designation for statistical purposes does not constitute a determination of jurisdictional authority or rights of ownership or entitlement.

Geographic: Vintage: 2010 Census (reference date: January 1, 2010)  
 Data Source: U.S. Census Bureau's MAINTIGR database (TAB100148)  
 Map Created by Geography Division: April 15, 2011

U.S. DEPARTMENT OF COMMERCE Economics and Statistics Administration U.S. Census Bureau

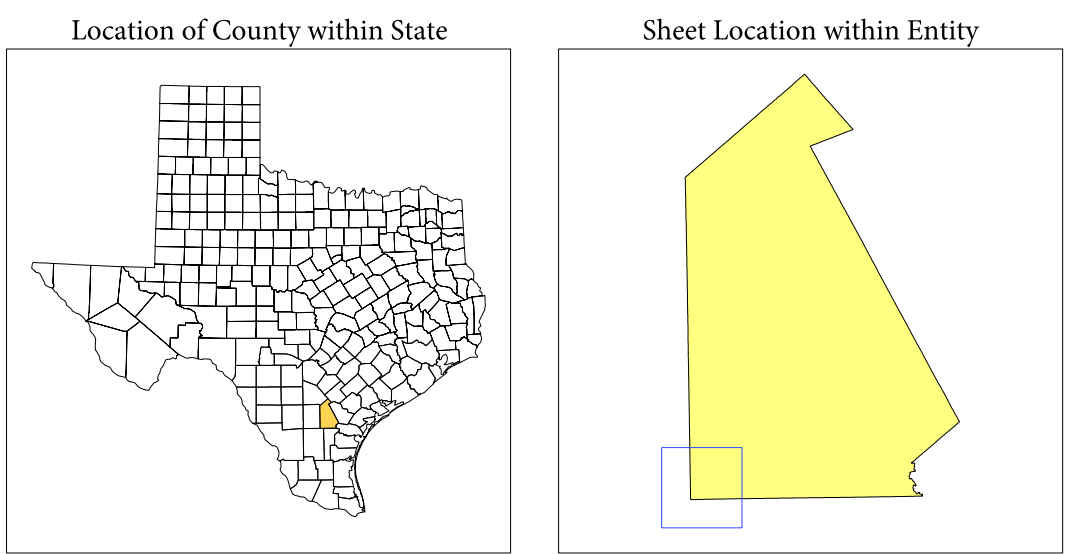
Projection: Albers Equal Area Conic  
 Datum: NAD 83  
 Spheroid: GRS 80  
 1st Standard Parallel: 27 36 51  
 2nd Standard Parallel: 34 43 24  
 Central Meridian: -100 04 35  
 Latitude of Projection's Origin: 25 50 13  
 False Easting: 0  
 False Northing: 0



Key to Sheets

13	14
17	18

PARENT SHEET 17  
 Total Sheets: 24  
 Index Sheets: 1  
 Parent Sheets: 20  
 Inset Sheets: 3



NAME: Live Oak County (297)  
 ENTITY TYPE: County or statistically equivalent entity  
 ST: Texas (48)