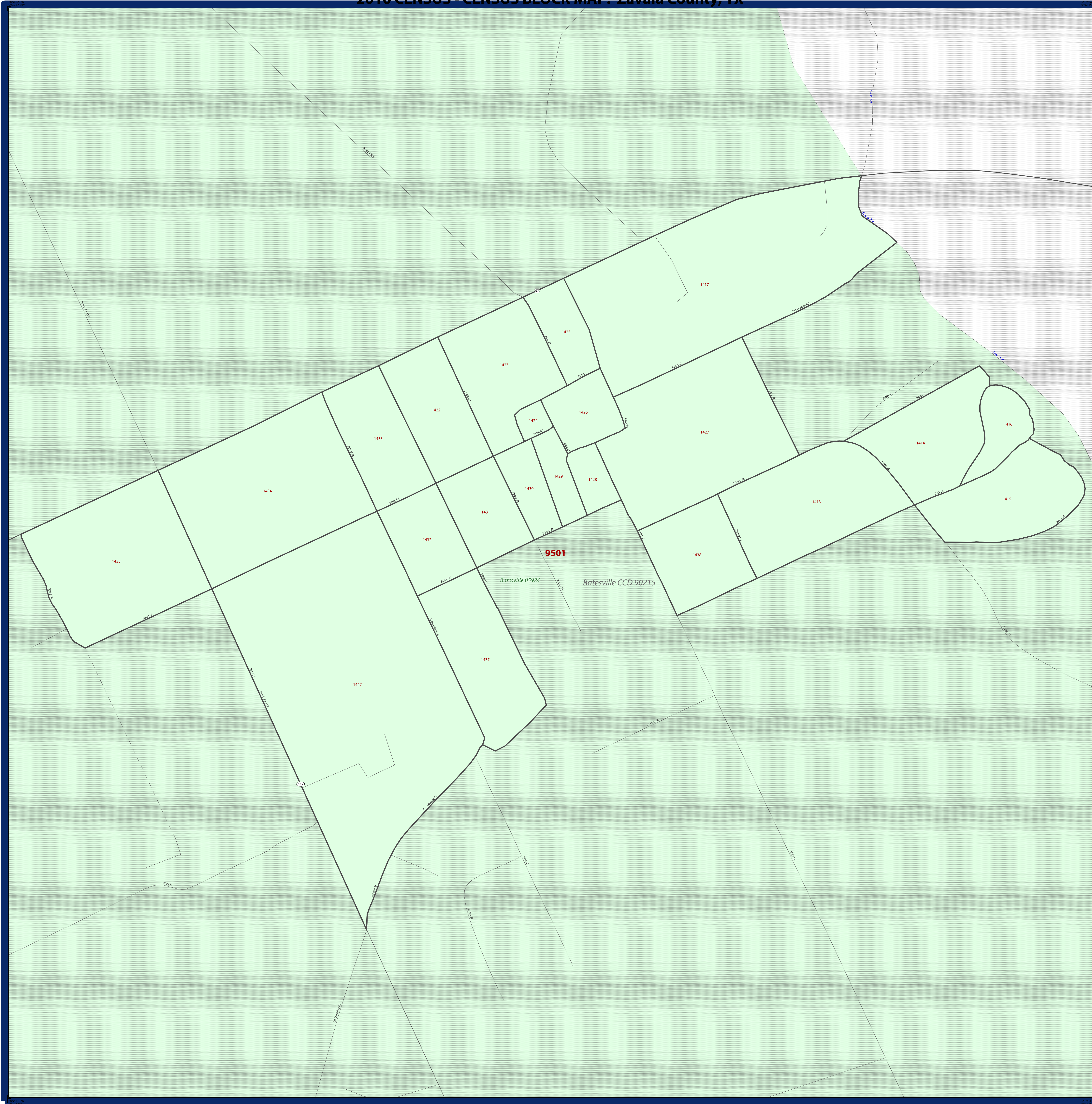


2010 CENSUS - CENSUS BLOCK MAP: Zavala County, TX



LEGEND		
SYMBOL DESCRIPTION	SYMBOL	LABEL STYLE
International	☆☆☆☆☆	CANADA
Federal American Indian Reservation	★ ★ ★ ★ ★	L'ANSE RESVN 1880
Off-Reservation Trust Land, Hawaiian Home Land	+ + + + +	T1880
Oklahoma Tribal Statistical Area, Alaska Native Village Statistical Area, Tribal Designated Statistical Area	◆ ◆ ◆ ◆ ◆	KAW OTSA 5690
American Indian Tribal Subdivision	● ● ● ● ●	EAGLE NEST DIST 200
State American Indian Reservation	///////	Tama Resvn 9400
State Designated Tribal Statistical Area	◆ ◆ ◆ ◆ ◆	Lumbee SDTSA 9815
Alaska Native Regional Corporation	▼ ▼ ▼ ▼ ▼	NANA ANRC 52120
State (or statistically equivalent entity)		NEW YORK 36
County (or statistically equivalent entity)	□ □ □ □ □	MONTGOMERY 031
Minor Civil Division (MCD)	○ ○ ○ ○ ○	Bristol town 07485
Census County Division (CCD), Census Subarea (CSA), Unincorporated Territory (UT)	○ ○ ○ ○ ○	Hanna CCD 91650
Consolidated City	○ ○ ○ ○ ○	MILFORD 47500
Incorporated Place ^{1,2}	Color swatches	Davis 18100
Census Designated Place (CDP) ²	Color swatches	Incline Village 35100
Census Tract	Color swatches	33.07
Census Block ³	Color swatches	3012

DESCRIPTION	SYMBOL	DESCRIPTION	SYMBOL
Interstate	Thick blue line with red border	Geographic Offset or Corridor	Thin grey line
U.S. Highway	Thin blue line with red border	Water Body	Blue area with wavy lines
State Highway	Thin blue line	Pleasant Lake	Blue area with wavy lines and label
Other Road	Thin grey line	Swamp, Marsh, or Gravel Pit/Quarry	Blue area with wavy lines and label
Cul-de-sac	Thin grey line with arrow	Glacier	Blue area with wavy lines and label
Circle	Thin grey line with circle	Military	Blue area with wavy lines and label
4WD Trail, Stairway, Alley, Walkway, or Ferry	Thin grey line with circle	National or State Park, Forest, or Recreation Area	Blue area with wavy lines and label
Railroad	Thin grey line with cross-ticks	Airport	Blue area with wavy lines and label
Pipeline or Power Line	Thin grey line with cross-ticks	Selected Mountain Peaks	Blue area with wavy lines and label
Ridge or Fence	Thin grey line with cross-ticks	Property Line	Blue area with wavy lines and label
Property Line	Thin grey line with cross-ticks	Island Name	Blue area with wavy lines and label
Perennial Stream	Blue line with wavy lines	Inset Area	Blue area with wavy lines and label
Intermittent Stream or Feature Not Elsewhere Classified	Blue line with wavy lines	Outside Subject Area	Blue area with wavy lines and label

Where state, county, and/or MCD/CCD boundaries coincide, the map shows the boundary symbol for only the highest-ranking of these boundaries. Where American Indian reservation and American Indian tribal subdivision boundaries coincide, the map shows only the American Indian reservation boundaries. Where Oklahoma tribal statistical area boundaries and American Indian tribal subdivision boundaries coincide, the map shows only the Oklahoma tribal statistical area boundaries.

1 A * following an MCD name denotes a false MCD. A ' ' following a place name indicates that a false MCD exists with the same name and FIPS code as the place; the false MCD label is not shown.

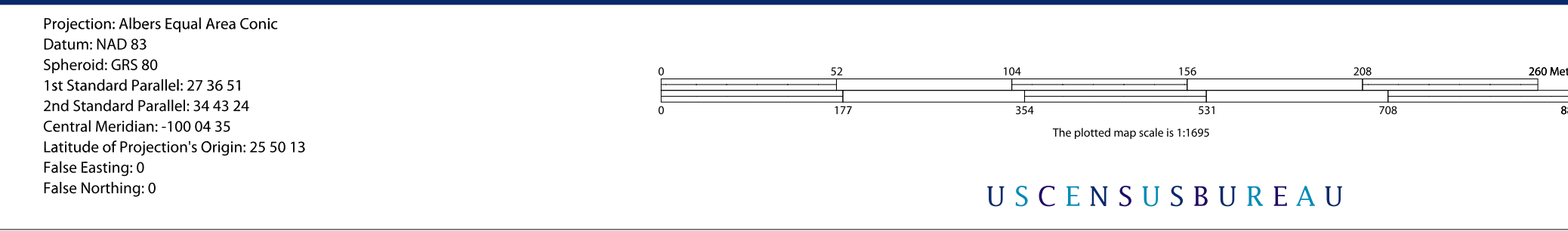
2 Place label color correlates to the place fill color.

3 A * following a block number indicates that the block number is repeated elsewhere in the block.

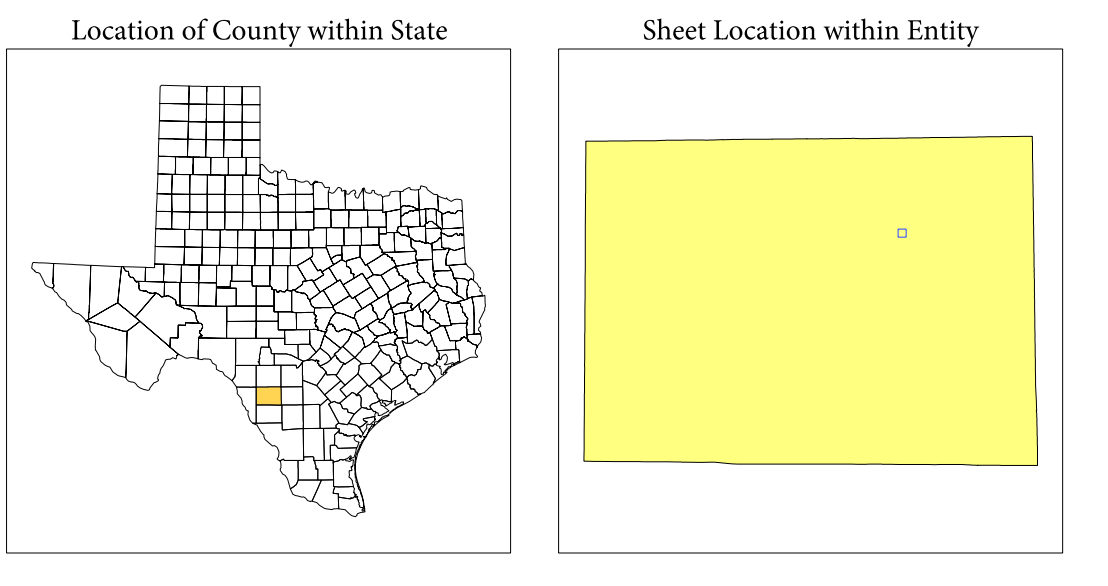
All legal boundaries and names are as of January 1, 2010. The boundaries shown on this map are for Census Bureau statistical data collection and tabulation purposes only; their depiction and designation for statistical purposes does not constitute a determination of jurisdictional authority or rights of ownership or entitlement.

Geographic Vintage: 2010 Census (reference date: January 1, 2010)
 Data Source: U.S. Census Bureau's MAINTIGER database (TAB100148)
 Map Created by Geography Division: April 15, 2011

U.S. DEPARTMENT OF COMMERCE Economics and Statistics Administration U.S. Census Bureau



INSET SHEET B1
 Total Sheets: 16
 Index Sheets: 1
 Parent Sheets: 12
 Inset Sheets: 3



NAME: Zavala County (507)
 ENTITY TYPE: County or statistically equivalent entity
 ST: Texas (48)

Geographic Unit (GU) Block Map Series
 2010 CENSUS BLOCK MAP (INSET) - County
 21004650701