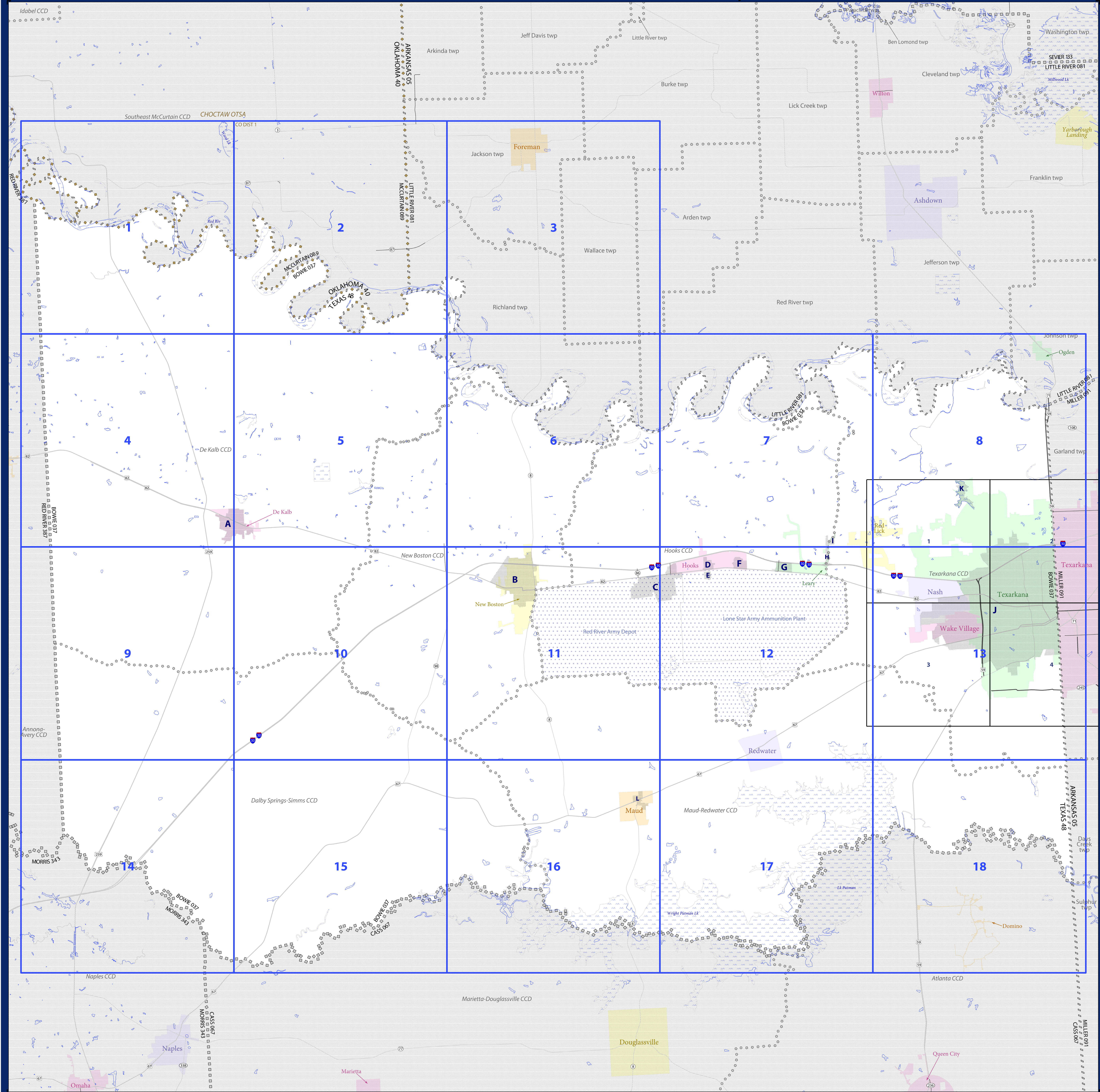


2010 CENSUS - CENSUS BLOCK MAP (INDEX): Bowie County, TX



LEGEND

SYMBOL DESCRIPTION	SYMBOL	SYMBOL DESCRIPTION	SYMBOL
International	☆☆☆☆☆	Geographic Offset or Corridor	—
Federal American Indian Reservation	☆☆☆☆☆	Water Body	—
Off-Reservation Trust Land, Hawaiian Home Land	+++++	Swamp, Marsh, or Gravel Pit/Quarry	—
Oklahoma Tribal Statistical Area, Alaska Native Village Statistical Area, Tribal Designated Statistical Area	Glacier	—
American Indian Tribal Subdivision	-----	Military	—
State American Indian Reservation	-----	National or State Park, Forest, or Recreation Area	—
State Designated Tribal Statistical Area	Airport	—
Alaska Native Regional Corporation	▽▽▽▽▽	Selected Mountain Peaks	▲
State (or statistically equivalent entity)	=====	Property Line	-----
County (or statistically equivalent entity)	=====	Perennial Stream	—
Minor Civil Division (MCD)	Intermittent Stream or Feature Not Elsewhere Classified	—
Consolidated City	○	Inset Area	A
Incorporated Place ^{1,2}	Yellow, Green, Blue	Outside Subject Area	Grey
Census Designated Place (CDP) ²	Yellow, Green, Blue		
Census Tract	Red		
Census Block ³	Red		

Where state, county, and/or MCD/CCD boundaries coincide, the map shows the boundary symbol for only the highest-ranking of these boundaries. Where American Indian reservation and American Indian tribal subdivision boundaries coincide, the map shows only the American Indian reservation boundaries. Where Oklahoma tribal statistical area boundaries and American Indian tribal subdivision boundaries coincide, the map shows only the Oklahoma tribal subdivision boundaries.

1 A "*" following an MCD name denotes a false MCD. A "*" following a place name indicates that a false MCD exists with the same name and FIPS code as the place; the false MCD label is not shown.

2 Place label color correlates to the place fill color.

3 A "*" following a block number indicates that the block number is repeated elsewhere in the block.

Where state, county, and/or MCD/CCD boundaries coincide, the map shows the boundary symbol for only the highest-ranking of these boundaries. Where American Indian reservation and American Indian tribal subdivision boundaries coincide, the map shows only the American Indian reservation boundaries. Where Oklahoma tribal statistical area boundaries and American Indian tribal subdivision boundaries coincide, the map shows only the Oklahoma tribal subdivision boundaries.

1 A "*" following an MCD name denotes a false MCD. A "*" following a place name indicates that a false MCD exists with the same name and FIPS code as the place; the false MCD label is not shown.

2 Place label color correlates to the place fill color.

3 A "*" following a block number indicates that the block number is repeated elsewhere in the block.



All legal boundaries and names are as of January 1, 2010. The boundaries shown on this map are for Census Bureau statistical data collection and tabulation purposes only; their depiction and designation for statistical purposes does not constitute a determination of jurisdictional authority or rights of ownership or entitlement.

Geographic Vintage: 2010 Census (reference date: January 1, 2010)
 Data Source: U.S. Census Bureau's MAINTIGR database (TAB10)
 Map Created by Geography Division: April 15, 2011

U.S. DEPARTMENT OF COMMERCE Economics and Statistics Administration U.S. Census Bureau

Projection: Albers Equal Area Conic
 Datum: NAD 83
 Spheroid: GRS 80
 1st Standard Parallel: 27 36 51
 2nd Standard Parallel: 34 43 24
 Central Meridian: -100 04 35
 Latitude of Projection's Origin: 25 50 13
 False Easting: 0
 False Northing: 0

The plotted map scale is 1:97233

0 2 4 6 8 10 kilometers
 0 2 4 6 8 10 miles

U.S. DEPARTMENT OF COMMERCE Economics and Statistics Administration U.S. Census Bureau

INDEX SHEET
 Total Sheets: 34
 Index Sheets: 1
 Parent Sheets: 18
 Inset Sheets: 15

NAME: Bowie County (037)
 ENTITY TYPE: County or statistically equivalent entity
 ST: Texas (48)

Geographic Unit (GU) Block Map Series
 2010 CENSUS BLOCK MAP (INDEX) - County
 210404837000