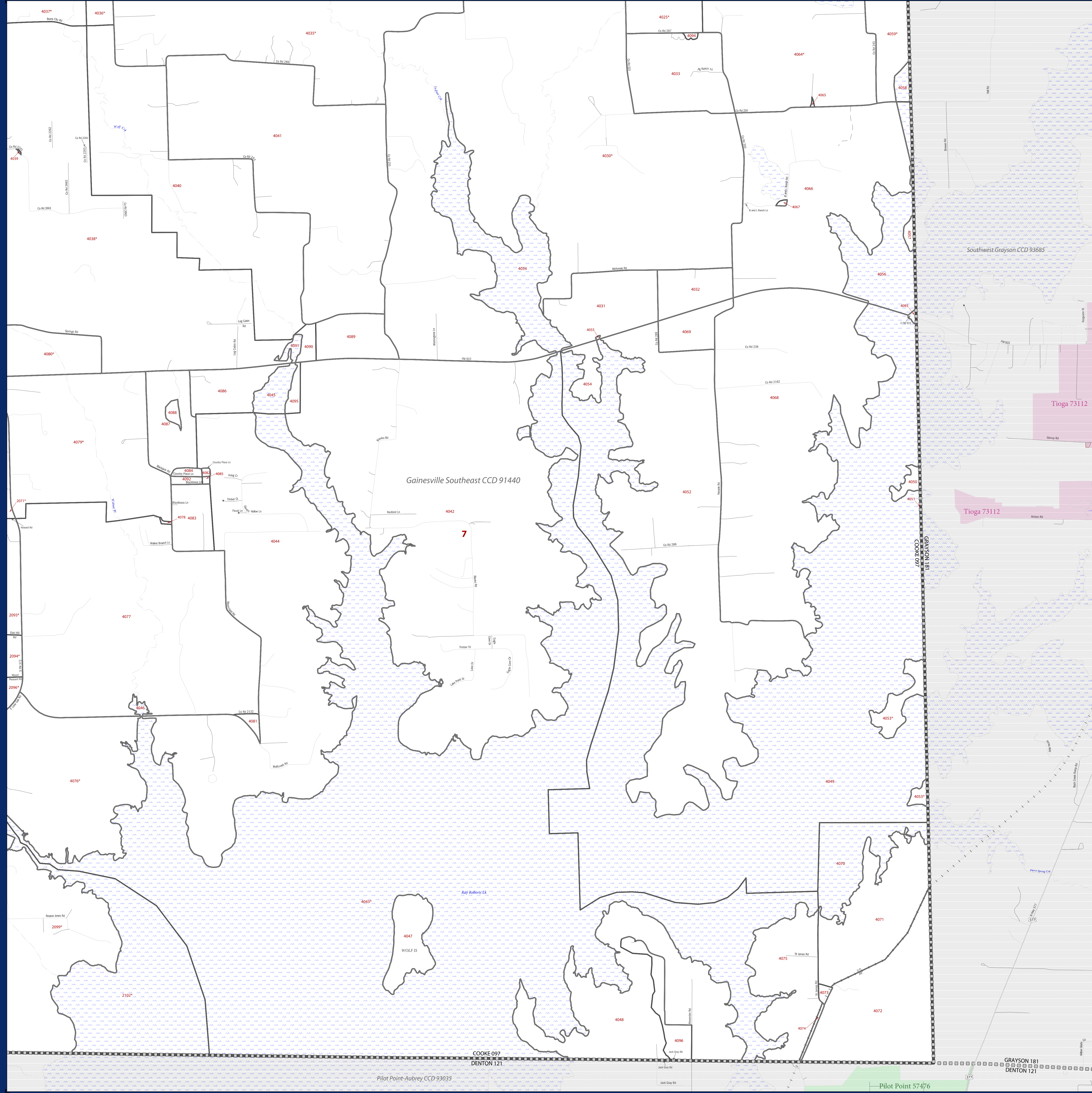


2010 CENSUS - CENSUS BLOCK MAP: Cooke County, TX



LEGEND

SYMBOL DESCRIPTION	SYMBOL	LABEL STYLE
International	☆☆☆☆☆☆	CANADA
Federal American Indian Reservation	★ ★ ★ ★ ★ ★	L'ANSE RESV N 1880
Off Reservation Trust Land, Hawaiian Home Land	+++++	T1880
Oklahoma Tribal Statistical Area, Alaska Native Village Statistical Area, Tribal Designated Statistical Area	◆◆◆◆◆◆	KAW OTSA 5690
American Indian Tribal Subdivision	●●●●●●	EAGLE NEST DIST 200
State American Indian Reservation	//////	Tama Resv n 9400
State Designated Tribal Statistical Area	◆◆◆◆◆◆	Lumbee SDTSA 9815
Alaska Native Regional Corporation	▼▼▼▼▼▼	NANA ANRC 52120
State (or statistically equivalent entity)		NEW YORK 36
County (or statistically equivalent entity)	□□□□□	MONTGOMERY 031
Minor Civil Division (MCD)	○ ○ ○ ○ ○	Bristol town 07485
Consolidated City	○ ○ ○ ○ ○	Hanna CCD 91650
Incorporated Place ^{1,2}	□ □ □ □ □	MILFORD 47500
Consolidated City	○ ○ ○ ○ ○	Davis 18100
Census Designated Place (CDP) ²	■ ■ ■ ■ ■	Incline Village 35100
Census Tract	■■■■■	33.07
Census Block ³	■■■■■	3012

DESCRIPTION	SYMBOL	DESCRIPTION	SYMBOL
Interstate		Geographic Offset or Corridor	
U.S. Highway		Water Body	
State Highway		Swamp, Marsh, or Gravel Pit/Quarry	
Other Road		Glacier	
Cul-de-sac		Military	
Circle		National or State Park, Forest, or Recreation Area	
4WD Trail, Stairway, Alley, Walkway, or Ferry		Airport	
Railroad		Selected Mountain Peaks	
Pipeline or Power Line		Island Name	
Ridge or Fence		Inset Area	
Property Line		Outside Subject Area	
Perennial Stream			
Intermittent Stream or Feature Not Elsewhere Classified			

Where state, county, and/or MCD/CCD boundaries coincide, the map shows the boundary symbol for only the highest-ranking of these boundaries. Where American Indian reservation and American Indian tribal subdivision boundaries coincide, the map shows only the American Indian reservation boundaries. Where Oklahoma tribal statistical area boundaries and American Indian tribal subdivision boundaries coincide, the map shows only the Oklahoma tribal statistical area boundaries.

1 A "*" following an MCD name denotes a false MCD. A "*" following a place name indicates that a false MCD exists with the same name and FIPS code as the place; the false MCD label is not shown.

2 Place label color correlates to the place fill color.

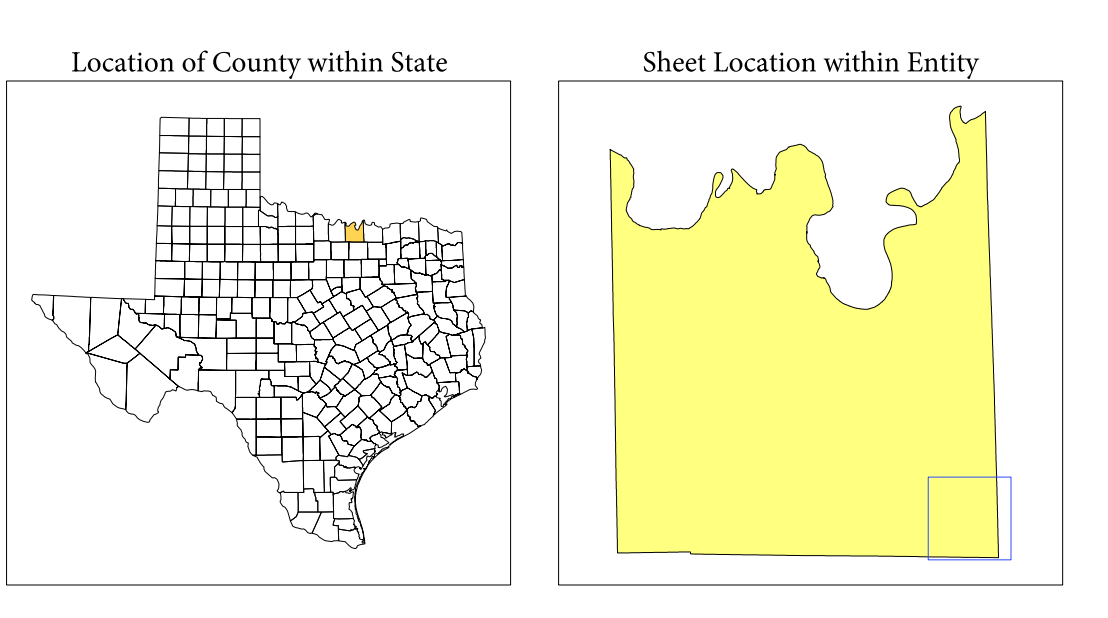
3 A "*" following a block number indicates that the block number is repeated elsewhere in the block.

Where state, county, and/or MCD/CCD boundaries coincide, the map shows the boundary symbol for only the highest-ranking of these boundaries. Where American Indian reservation and American Indian tribal subdivision boundaries coincide, the map shows only the American Indian reservation boundaries. Where Oklahoma tribal statistical area boundaries and American Indian tribal subdivision boundaries coincide, the map shows only the Oklahoma tribal statistical area boundaries.

1 A "*" following an MCD name denotes a false MCD. A "*" following a place name indicates that a false MCD exists with the same name and FIPS code as the place; the false MCD label is not shown.

2 Place label color correlates to the place fill color.

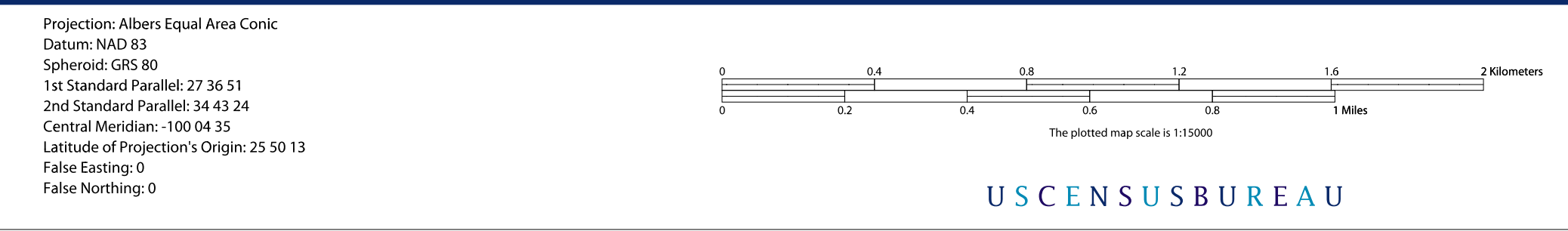
3 A "*" following a block number indicates that the block number is repeated elsewhere in the block.



All legal boundaries and names are as of January 1, 2010. The boundaries shown on this map are for Census Bureau statistical data collection and tabulation purposes only; their depiction and designation for statistical purposes does not constitute a determination of jurisdictional authority or rights of ownership or entitlement.

Geographic Vintage: 2010 Census (reference date: January 1, 2010)
 Data Source: U.S. Census Bureau's MAI/TRACT database (TAB10)
 Map Created by Geography Division: April 15, 2011

U.S. DEPARTMENT OF COMMERCE Economics and Statistics Administration U.S. Census Bureau



Key to Sheets

21	22
26	27

PARENT SHEET 27
 Total Sheets: 33
 Index Sheets: 1
 Parent Sheets: 27
 Inset Sheets: 5

NAME: Cooke County (097)
 ENTITY TYPE: County or statistically equivalent entity
 ST: Texas (48)

Geographic Unit (GU) Block Map Series
 2010 CENSUS BLOCK MAP (PARENT) - County
 31040090207