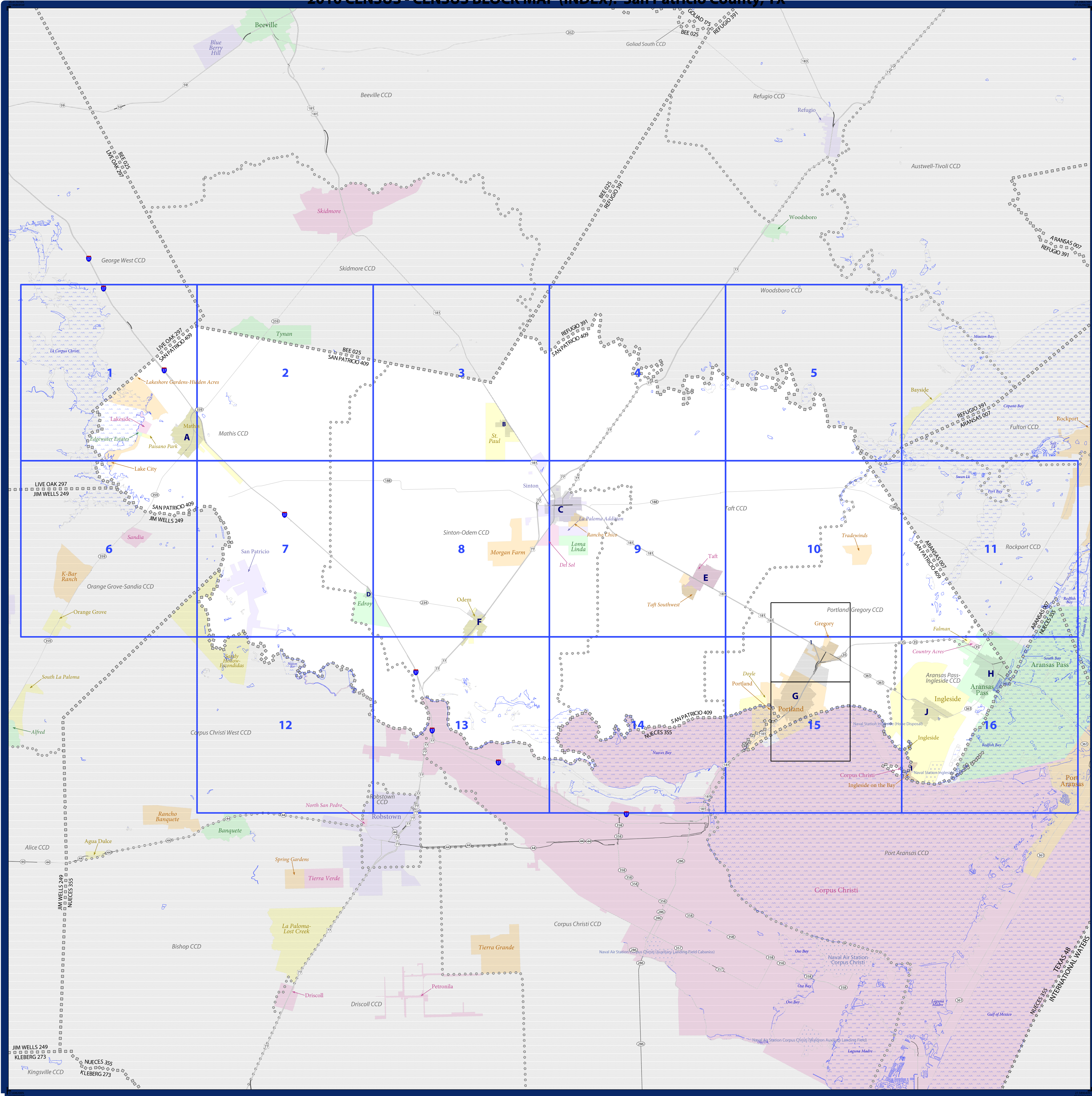


2010 CENSUS - CENSUS BLOCK MAP (INDEX): San Patricio County, TX



LEGEND				
SYMBOL DESCRIPTION	SYMBOL	SYMBOL	SYMBOL	SYMBOL
International	☆☆☆☆☆	CANADA		
Federal American Indian Reservation	★ ★ ★ ★ ★	L'ANSE RESV N 1880		
Off-Reservation Trust Land, Hawaiian Home Land	+ + + + +	T1880		
Oklahoma Tribal Statistical Area, Alaska Native Village Statistical Area, Tribal Designated Statistical Area	◆ ◆ ◆ ◆ ◆	KAW OTSA 5690		
American Indian Tribal Subdivision	● ● ● ● ●	EAGLE NEST DIST 200		
State American Indian Reservation	▨ ▨ ▨ ▨ ▨	Tama Resvn 9400		
State Designated Tribal Statistical Area	◆ ◆ ◆ ◆ ◆	Lumbee SDTSA 9815		
Alaska Native Regional Corporation	▼ ▼ ▼ ▼ ▼	NANA ANRC 52120		
State (or statistically equivalent entity)	▨ ▨ ▨ ▨ ▨	NEW YORK 36		
County (or statistically equivalent entity)	▨ ▨ ▨ ▨ ▨	MONTGOMERY 031		
Minor Civil Division (MCD)	○ ○ ○ ○ ○	Bristol town 07485		
Consolidated City	○ ○ ○ ○ ○	Hanna CCD 91650		
Incorporated Place ^{1,2}	○ ○ ○ ○ ○	MILFORD 47500		
Census Designated Place (CDP) ²	○ ○ ○ ○ ○	Davis 18100		
Census Tract	▨ ▨ ▨ ▨ ▨	Incline Village 35100		
Census Block ³	▨ ▨ ▨ ▨ ▨	33.07		

DESCRIPTION	SYMBOL	DESCRIPTION	SYMBOL
Interstate	— 1 —	Geographic Offset or Corridor	—
U.S. Highway	— 2 —	Water Body	— Pleasant Lake
State Highway	— 3 —	Swamp, Marsh, or Gravel Pit/Quarry	— Obsolete Swamp
Other Road	— 4 —	Glacier	— Bering Glacier
Cul-de-sac	— 5 —	Military	— Fort Belvoir
Circle	— 6 —	National or State Park, Forest, or Recreation Area	— Yosemite NP
Circle Truck Stop, Alley, Walkway, or Ferry	— 7 —	Airport	— Airport
Railroad	— 8 —	Selected Mountain Peaks	— Mt. Shasta
Pipeline or Power Line	— 9 —	Inland Name	— DEER IS
Ridge or Fence	— 10 —	Inset Area	— A
Property Line	— 11 —	Outside Subject Area	—
Perennial Stream	— 12 —		
Intermittent Stream or Feature Not Elsewhere Classified	— 13 —		

Where state, county, and/or MCD/CCD boundaries coincide, the map shows the boundary symbol for only the highest-ranking of these boundaries. Where American Indian reservation and American Indian tribal subdivision boundaries coincide, the map shows only the American Indian reservation boundaries. Where Oklahoma tribal statistical area boundaries and American Indian tribal subdivision boundaries coincide, the map shows only the Oklahoma tribal statistical area boundaries.

1 A * following an MCD name denotes a false MCD. A * following a place name indicates that a false MCD exists with the same name and FIPS code as the place; the false MCD label is not shown.

2 Place label color correlates to the place fill color.

3 A * following a block number indicates that the block number is repeated elsewhere in the block.

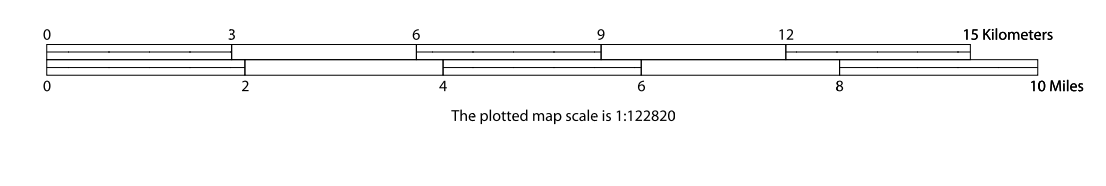


All legal boundaries and names are as of January 1, 2010. The boundaries shown on this map are for Census Bureau statistical data collection and tabulation purposes only; their depiction and designation for statistical purposes does not constitute a determination of jurisdictional authority or rights of ownership or entitlement.

Geographic: Vintage: 2010 Census (reference date: January 1, 2010)
 Data Source: U.S. Census Bureau's MAINTENANCE database (TAB100148)
 Map Created by Geography Division: April 15, 2011

U.S. DEPARTMENT OF COMMERCE Economics and Statistics Administration U.S. Census Bureau

Projection: Albers Equal Area Conic
 Datum: NAD 83
 Spheroid: GRS 80
 1st Standard Parallel: 27 36 51
 2nd Standard Parallel: 34 43 24
 Central Meridian: -100 04 35
 Latitude of Projection's Origin: 25 50 13
 False Easting: 0
 False Northing: 0



INDEX SHEET
 Total Sheets: 28
 Index Sheets: 1
 Parent Sheets: 16
 Inset Sheets: 11

NAME: San Patricio County (409)
 ENTITY TYPE: County or statistically equivalent entity
 ST: Texas (48)

Geographic Unit: GVI Block Map Series
 2010 CENSUS BLOCK MAP (INDEX) - County
 2100480000