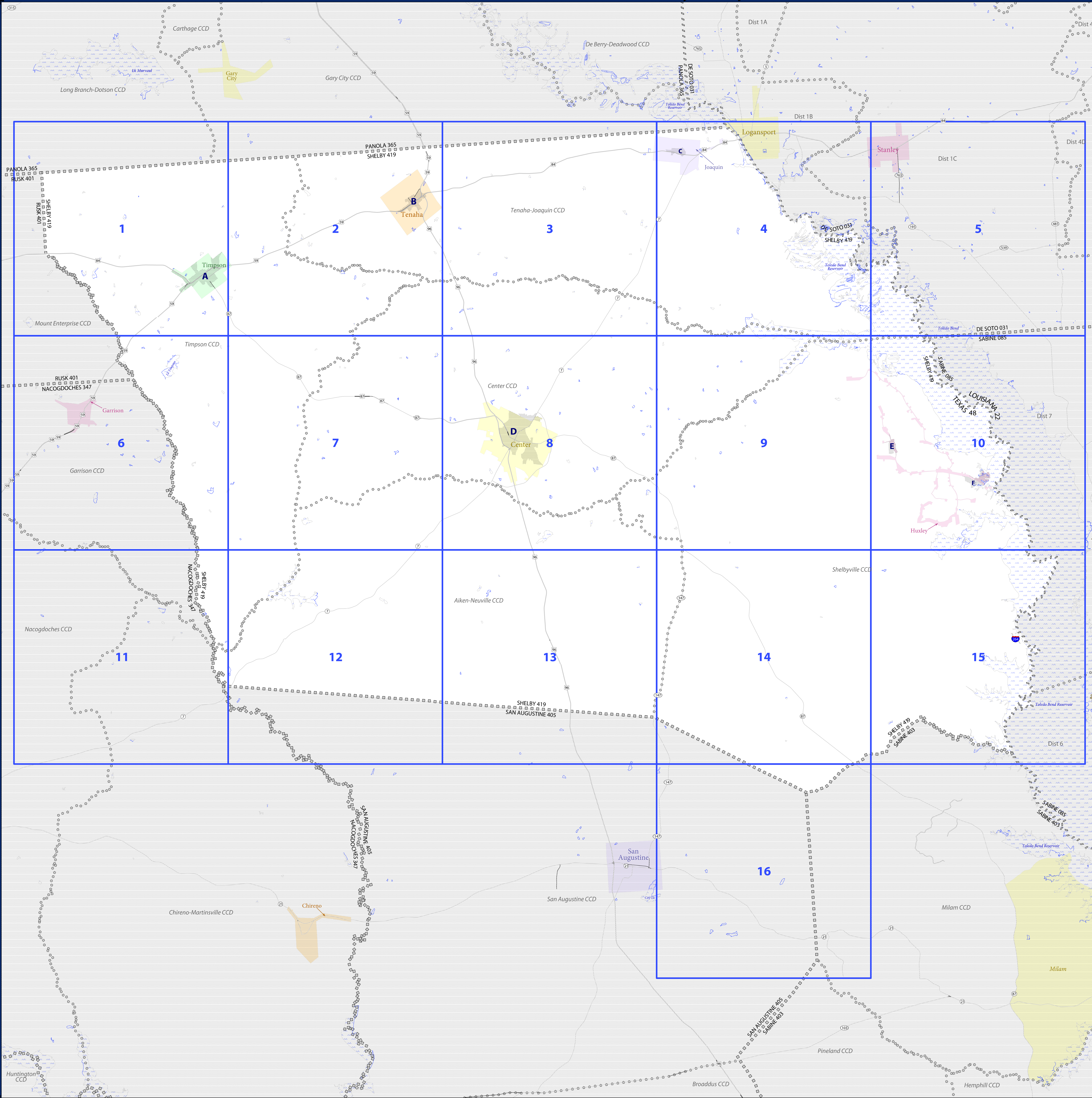


# 2010 CENSUS - CENSUS BLOCK MAP (INDEX): Shelby County, TX



### LEGEND

| SYMBOL DESCRIPTION                                                                                           | SYMBOL       | LABEL STYLE           |
|--------------------------------------------------------------------------------------------------------------|--------------|-----------------------|
| International                                                                                                | ☆☆☆☆☆        | CANADA                |
| Federal American Indian Reservation                                                                          | *****        | L'ANSE RESV N 1880    |
| Off Reservation Trust Land, Hawaiian Home Land                                                               | +++++        | T1880                 |
| Oklahoma Tribal Statistical Area, Alaska Native Village Statistical Area, Tribal Designated Statistical Area | ◆◆◆◆◆        | KAW OTSA 5690         |
| American Indian Tribal Subdivision                                                                           | ●●●●●        | EAGLE NEST DIST 200   |
| State American Indian Reservation                                                                            | //////       | Tama Resv n 9400      |
| State Designated Tribal Statistical Area                                                                     | ◆◆◆◆◆        | Lumbee SDTSA 9815     |
| Alaska Native Regional Corporation                                                                           | ▼▼▼▼▼        | NANA ANRC 52120       |
| State (or statistically equivalent entity)                                                                   |              | NEW YORK 36           |
| County (or statistically equivalent entity)                                                                  | □□□□□        | MONTGOMERY 031        |
| Minor Civil Division (MCD)                                                                                   | ○ ○ ○ ○ ○    | Bristol town 07485    |
| Consolidated City                                                                                            | ○ ○ ○ ○ ○    | Hanna CCD 91650       |
| Incorporated Place <sup>1,2</sup>                                                                            | Colorful Box | MILFORD 47500         |
| Census Designated Place (CDP) <sup>2</sup>                                                                   | Colorful Box | Davis 18100           |
| Census Tract                                                                                                 | Colorful Box | Incline Village 35100 |
| Census Block <sup>3</sup>                                                                                    | Colorful Box | 33.07                 |

| DESCRIPTION                                             | SYMBOL                      | DESCRIPTION                                        | SYMBOL         |
|---------------------------------------------------------|-----------------------------|----------------------------------------------------|----------------|
| Interstate                                              | Thick Blue Line             | Geographic Offset or Corridor                      | Thin Red Line  |
| U.S. Highway                                            | Thick Grey Line             | Water Body                                         | Blue Area      |
| State Highway                                           | Thin Grey Line              | Swamp, Marsh, or Gravel Pit/Quarry                 | Green Area     |
| Other Road                                              | Thin Black Line             | Glacier                                            | Blue Area      |
| Cul-de-sac                                              | Thin Black Line             | Military                                           | Blue Area      |
| Circle                                                  | Thin Black Line             | National or State Park, Forest, or Recreation Area | Green Area     |
| Circle                                                  | Thin Black Line             | Airport                                            | Blue Area      |
| 4WD Trail, Stunway, Alley, Walkway, or Ferry            | Thin Black Line             | Selected Mountain Peaks                            | Black Triangle |
| Railroad                                                | Black Line with Cross-ticks | Island Name                                        | Black Triangle |
| Pipeline or Power Line                                  | Thin Black Line             | Inset Area                                         | Grey Box       |
| Ridge or Fence                                          | Thin Black Line             | Outside Subject Area                               | Grey Box       |
| Property Line                                           | Dashed Black Line           |                                                    |                |
| Perennial Stream                                        | Blue Line                   |                                                    |                |
| Intermittent Stream or Feature Not Elsewhere Classified | Blue Line                   |                                                    |                |

Where state, county, and/or MCD/CCD boundaries coincide, the map shows the boundary symbol for only the highest-ranking of these boundaries. Where American Indian reservation and American Indian tribal subdivision boundaries coincide, the map shows only the American Indian reservation boundaries. Where Oklahoma tribal statistical area boundaries and American Indian tribal subdivision boundaries coincide, the map shows only the Oklahoma tribal statistical area boundaries.

1 A "\*" following an MCD name denotes a false MCD. A "\*" following a place name indicates that a false MCD exists with the same name and FIPS code as the place; the false MCD label is not shown.

2 Place label color correlates to the place fill color.

3 A "\*" following a block number indicates that the block number is repeated elsewhere in the block.

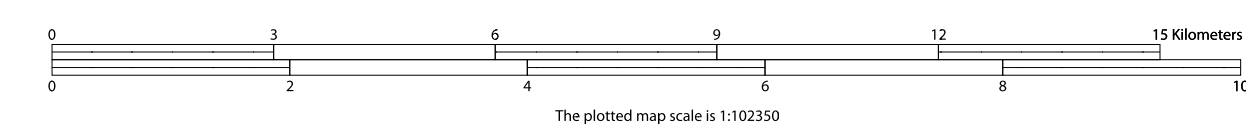


All legal boundaries and names are as of January 1, 2010. The boundaries shown on this map are for Census Bureau's statistical data collection and tabulation purposes only; their depiction and designation for statistical purposes does not constitute a determination of jurisdictional authority or rights of ownership or entitlement.

Geographic: Vintage: 2010 Census (reference date: January 1, 2010)  
 Data Source: U.S. Census Bureau's MAINTIGR database (TAB10)  
 Map Created by Geography Division: April 15, 2011

U.S. DEPARTMENT OF COMMERCE Economics and Statistics Administration U.S. Census Bureau

Projection: Albers Equal Area Conic  
 Datum: NAD83  
 Spheroid: GRS 80  
 1st Standard Parallel: 27 36 51  
 2nd Standard Parallel: 34 43 24  
 Central Meridian: -100 04 35  
 Latitude of Projection's Origin: 25 50 13  
 False Easting: 0  
 False Northing: 0



USCENSUSBUREAU

INDEX SHEET  
 Total Sheets: 23  
 Index Sheets: 1  
 Parent Sheets: 16  
 Inset Sheets: 6

NAME: Shelby County (419)  
 ENTITY TYPE: County or statistically equivalent entity  
 ST: Texas (48)

Geographic Unit (GU) Block Map Series  
 2010 CENSUS BLOCK MAP (INDEX) - County  
 210604419000