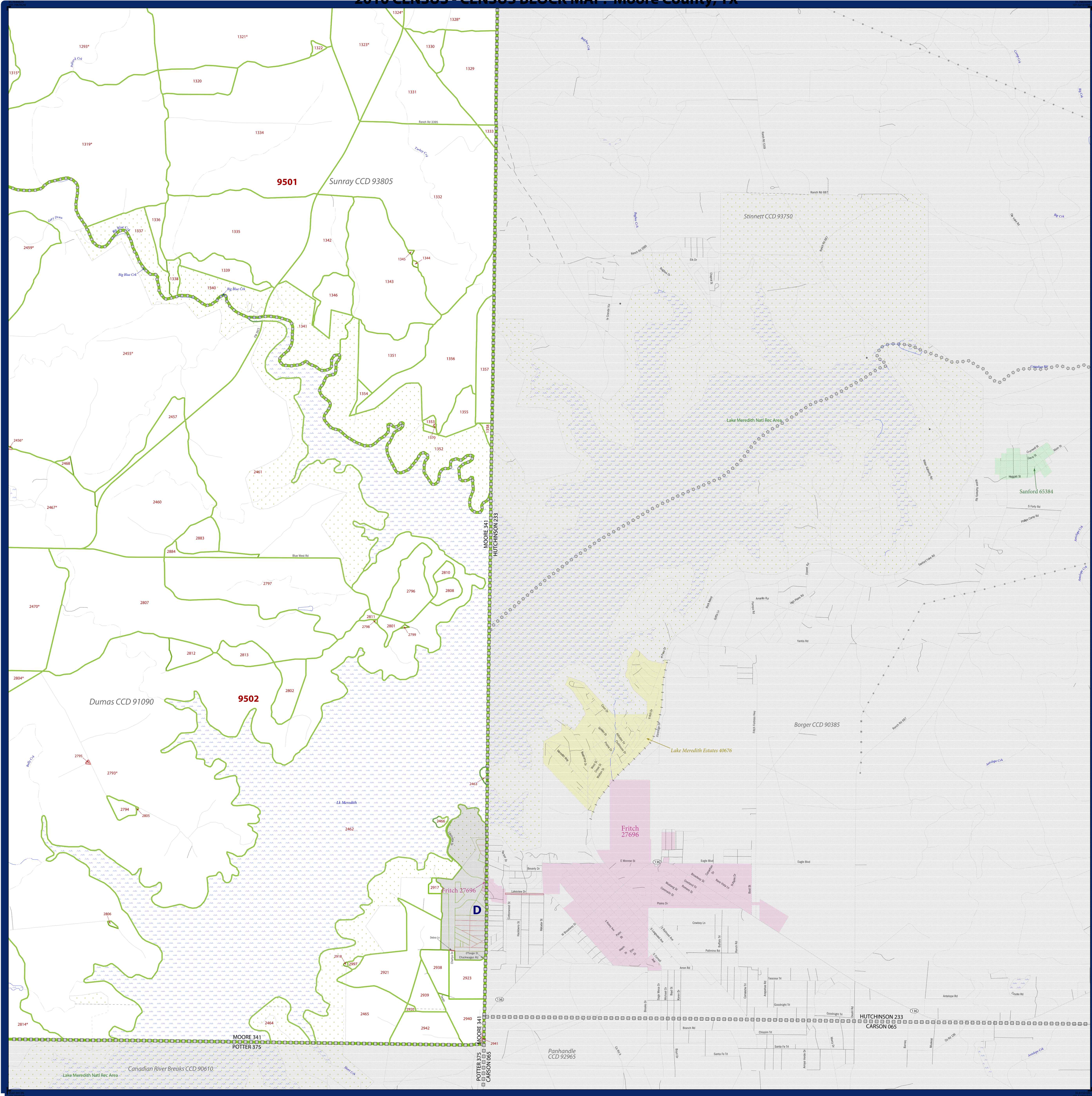


# 2010 CENSUS - CENSUS BLOCK MAP: Moore County, TX



LEGEND	
SYMBOL DESCRIPTION	SYMBOL
International	☆☆☆☆☆
Federal American Indian Reservation	★ ★ ★ ★ ★
Off-Reservation Trust Land, Hawaiian Home Land	+ + + + +
Oklahoma Tribal Statistical Area, Alaska Native Village Statistical Area, Tribal Designated Statistical Area	◆ ◆ ◆ ◆ ◆
American Indian Tribal Subdivision	● ● ● ● ●
State American Indian Reservation	//// ////
State Designated Tribal Statistical Area	◆ ◆ ◆ ◆ ◆
Alaska Native Regional Corporation	▼ ▼ ▼ ▼ ▼
State (or statistically equivalent entity)	
County (or statistically equivalent entity)	□ □ □ □ □
Minor Civil Division (MCD)	○ ○ ○ ○ ○
Consolidated City	○ ○ ○ ○ ○
Incorporated Place <sup>1,2</sup>	Colorful Box
Census Designated Place (CDP) <sup>2</sup>	Colorful Box
Census Tract	Colorful Box
Census Block <sup>3</sup>	Colorful Box

DESCRIPTION	SYMBOL	DESCRIPTION	SYMBOL
Interstate	Thick Blue Line	Geographic Offset or Corridor	Thin Red Line
U.S. Highway	Thin Blue Line	Water Body	Blue Area
State Highway	Thin Blue Line	Swamp, Marsh, or Gravel Pit/Quarry	Blue Dotted Area
Other Road	Thin Blue Line	Glacier	Blue Dotted Area
Cul-de-sac	Thin Blue Line	Military	Blue Dotted Area
Circle	Thin Blue Line	National or State Park, Forest, or Recreation Area	Green Area
4WD Trail, Stairway, Alley, Walkway, or Ferry	Thin Blue Line	Airport	Blue Area
Railroad	Thin Blue Line	Selected Mountain Peaks	Black Triangle
Pipeline or Power Line	Thin Blue Line	Island Name	Black Triangle
Ridge or Fence	Thin Blue Line	Inset Area	Black Triangle
Property Line	Thin Blue Line	Outside Subject Area	Black Triangle
Perennial Stream	Blue Line		
Intermittent Stream or Feature Not Elsewhere Classified	Blue Line		

Where state, county, and/or MCD/CCD boundaries coincide, the map shows the boundary symbol for only the highest-ranking of these boundaries. Where American Indian reservation and American Indian tribal subdivision boundaries coincide, the map shows only the American Indian reservation boundaries. Where Oklahoma tribal statistical area boundaries and American Indian tribal subdivision boundaries coincide, the map shows only the Oklahoma tribal statistical area boundaries.

1. A "\*" following an MCD name denotes a false MCD. A "\*" following a place name indicates that a false MCD exists with the same name and FIPS code as the place; the false MCD label is not shown.

2. Place label color correlates to the place fill color.

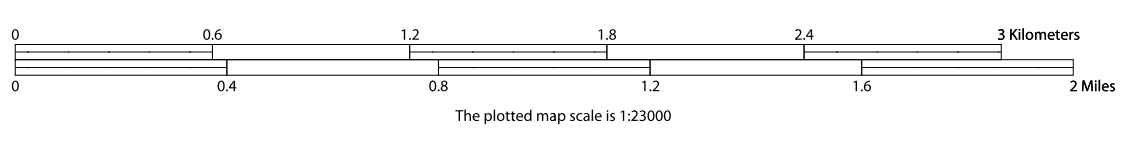
3. A "\*" following a block number indicates that the block number is repeated elsewhere in the block.

All legal boundaries and names are as of January 1, 2010. The boundaries shown on this map are for Census Bureau statistical data collection and tabulation purposes only; their depiction and designation for statistical purposes does not constitute a determination of jurisdictional authority or rights of ownership or entitlement.

Geographic Vintage: 2010 Census (reference date: January 1, 2010)  
 Data Source: U.S. Census Bureau's MAI/TIGER database (TAB100148)  
 Map Created by Geography Division: April 15, 2011

U.S. DEPARTMENT OF COMMERCE Economics and Statistics Administration U.S. Census Bureau

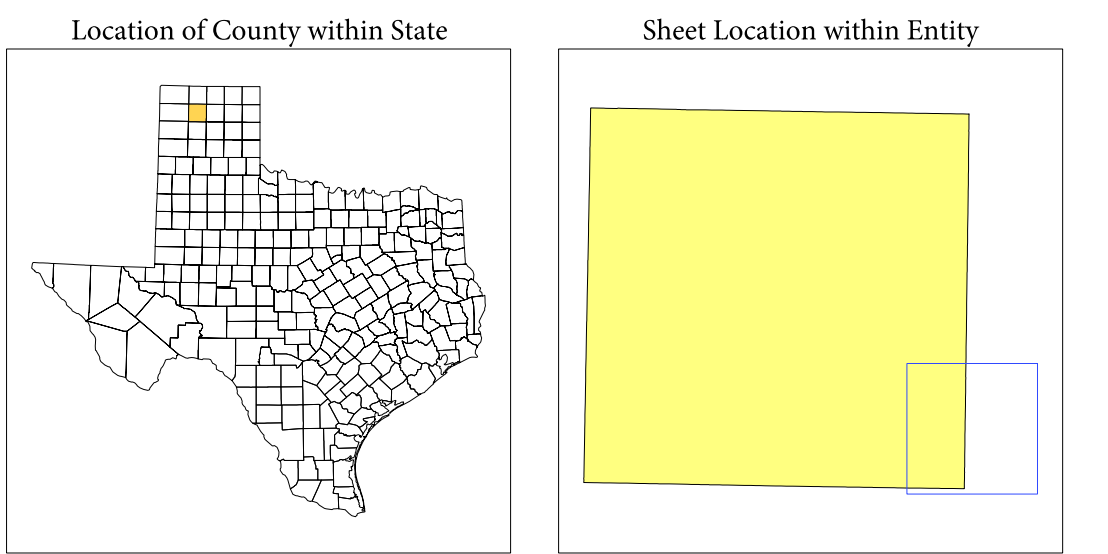
Projection: Albers Equal Area Conic  
 Datum: NAD 83  
 Spheroid: GRS 80  
 1st Standard Parallel: 27 36 51  
 2nd Standard Parallel: 34 43 24  
 Central Meridian: -100 04 35  
 Latitude of Projection's Origin: 25 50 13  
 False Easting: 0  
 False Northing: 0



Key to Sheets

7	8
11	12

PARENT SHEET 12  
 Total Sheets: 17  
 Index Sheets: 1  
 Parent Sheets: 12  
 Inset Sheets: 4



NAME: Moore County (341)  
 ENTITY TYPE: County or statistically equivalent entity  
 ST: Texas (48)

Geographic Unit (GU) Block Map Series  
 2010 CENSUS BLOCK MAP (PARENT) - County  
 210048341012