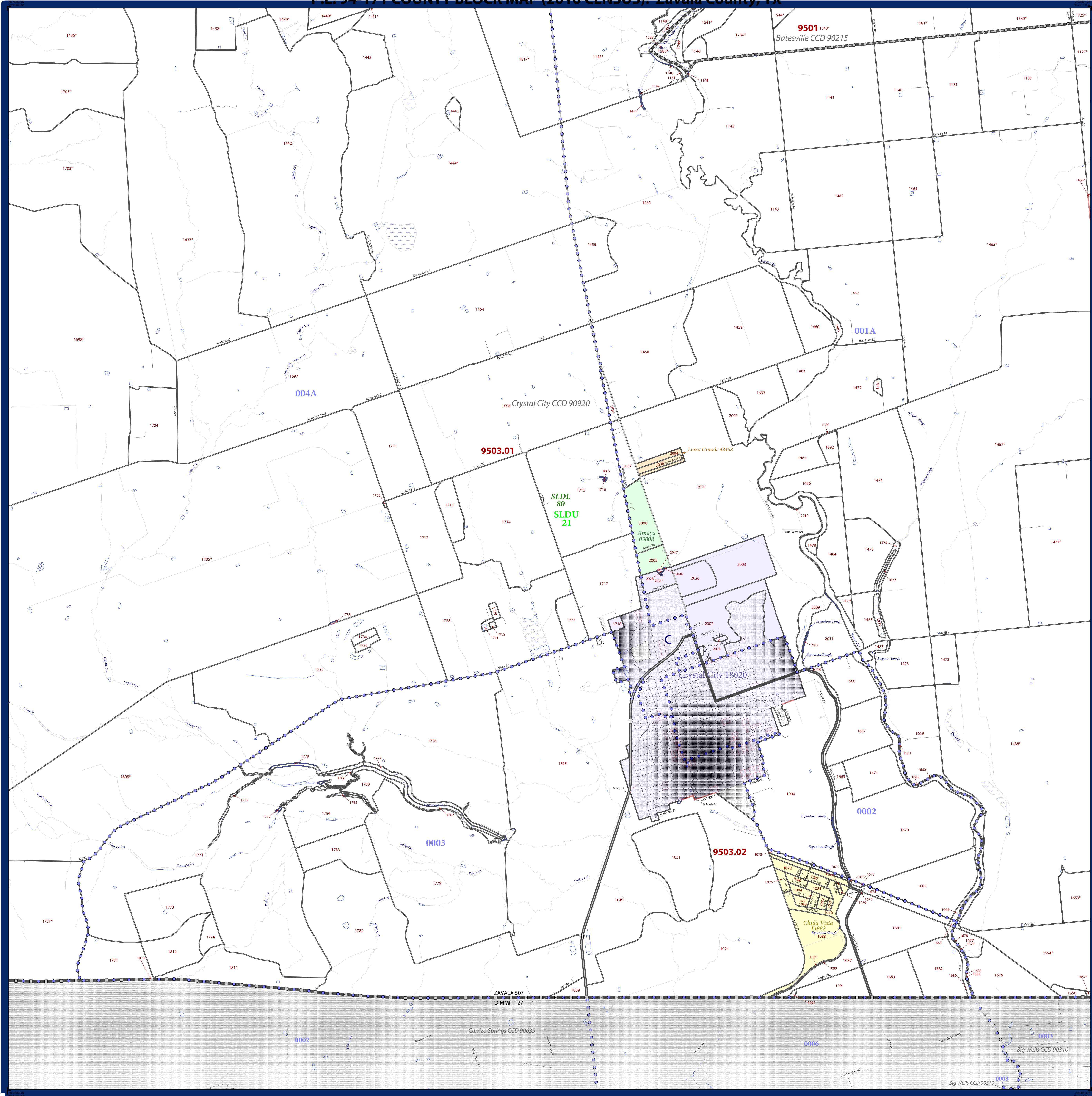


P.L. 94-171 COUNTY BLOCK MAP (2010 CENSUS): Zavala County, TX



LEGEND	
SYMBOL DESCRIPTION	SYMBOL
Federal American Indian Reservation	*****
Off-Reservation Trust Land, Hawaiian Home Land	+++++
Oklahoma Tribal Statistical Area, Alaska Native Village Statistical Area, Tribal Designated Statistical Area	◆◆◆◆◆
American Indian Tribal Subdivision	●●●●●
State American Indian Reservation	//////
State Designated Tribal Statistical Area	◆◆◆◆◆
Alaska Native Regional Corporation	▼▼▼▼▼
State (or statistically equivalent entity)	
County (or statistically equivalent entity)	□□□□□
Minor Civil Division (MCD) ¹	○ ○ ○ ○ ○
Census County Division (CCD), Census Subarea (CSA), Unorganized Territory (UT)	○ ○ ○ ○ ○
Consolidated City	○ ○ ○ ○ ○
Incorporated Place ^{1,2}	■ ■ ■ ■ ■
Census Designated Place (CDP) ²	■ ■ ■ ■ ■
Voting District (VTD)	● ● ● ● ●
State Legislative District - Upper (Senate)	■ ■ ■ ■ ■
State Legislative District - Lower (House)	▼ ▼ ▼ ▼ ▼
Census Tract	— — — — —
Census Block ³	— — — — —

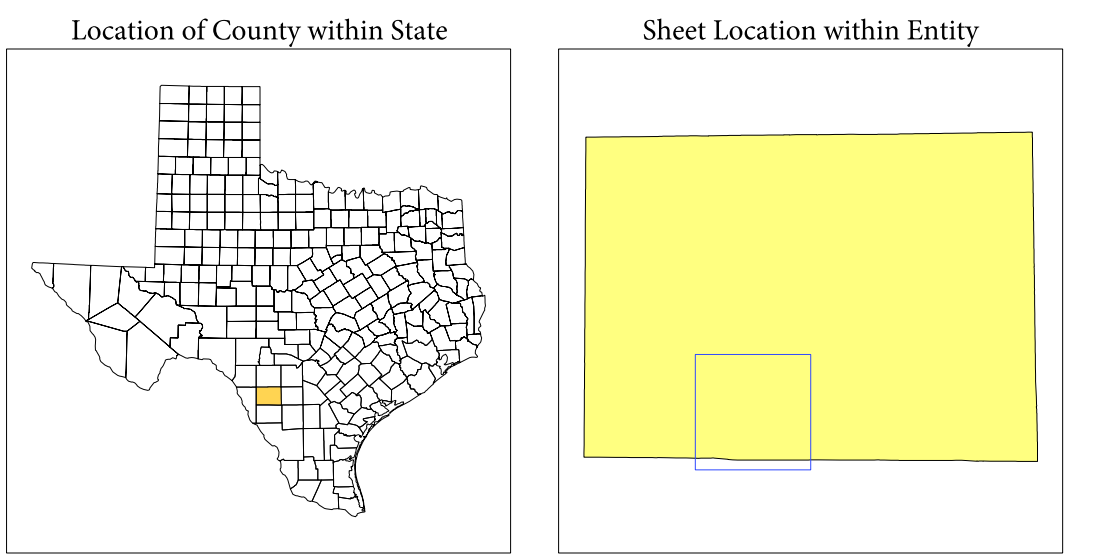
SYMBOL	DESCRIPTION	SYMBOL	DESCRIPTION
—	Interstate	—	Geographic Offset or Corridor
—	U.S. Highway	—	Water Body
—	State Highway	—	Swamp, Marsh, or Gravel Pit/Quarry
—	Other Road	—	Marsh Lot
—	Cul-de-sac	—	Glacier
○	Circle	—	Military
—	AWD Trail, Steamer, Alley, Walkway, or Ferry	—	National or State Park, Forest, or Recreation Area
—	Railroad	—	Airport
—	Pipeline or Power Line	—	Selected Mountain Peaks
—	Ridge or Fence	—	Inset Area
—	Property Line	—	Outside Subject Area
—	Perennial Stream	—	
—	Intermittent Stream	—	

Where state, county, and/or MCD/CCD boundaries coincide, the map shows the boundary symbol for only the highest-ranking of these boundaries. Where American Indian reservation and American Indian tribal subdivision boundaries coincide, the map shows only the American Indian reservation boundaries. Where Oklahoma tribal statistical area boundaries and American Indian tribal subdivision boundaries coincide, the map shows only the Oklahoma tribal statistical area boundaries.

1 A " " following an MCD name denotes a false MCD. A " " following a place name indicates that a false MCD exists with the same name and FIPS code as the place; the false MCD label is not shown.

2 Place label color correlates to the place fill color.

3 A " " following a block number indicates that the block number is repeated elsewhere in the block.

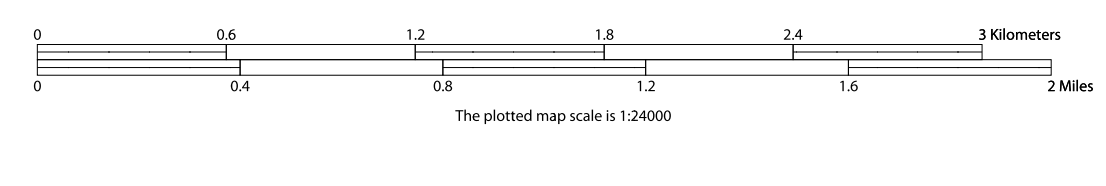


All legal boundaries and names are as of January 1, 2010. The boundaries shown on this map are for Census Bureau statistical data collection and tabulation purposes only; their depiction and designation for statistical purposes does not constitute a determination of jurisdictional authority or rights of ownership or entitlement.

Geographic: Vintage: 2010 Census (reference date: January 1, 2010)
 Data Source: U.S. Census Bureau's MAI/TIGER database (TAB100148)
 Map Created by Geography Division: December 14, 2010

U.S. DEPARTMENT OF COMMERCE Economics and Statistics Administration U.S. Census Bureau

Projection: Albers Equal Area Conic
 Datum: NAD 83
 Spheroid: GRS 80
 1st Standard Parallel: 27 36 51
 2nd Standard Parallel: 34 43 24
 Central Meridian: -100 04 35
 Latitude of Projection's Origin: 25 50 13
 False Easting: 0
 False Northing: 0



Key to Sheets

5	6	7
9	10	11

PARENT SHEET 10
 Total Sheets: 16
 Index Sheets: 1
 Parent Sheets: 12
 Inset Sheets: 3

NAME: Zavala County (507)
 ENTITY TYPE: County or statistically equivalent entity
 ST: Texas (48)