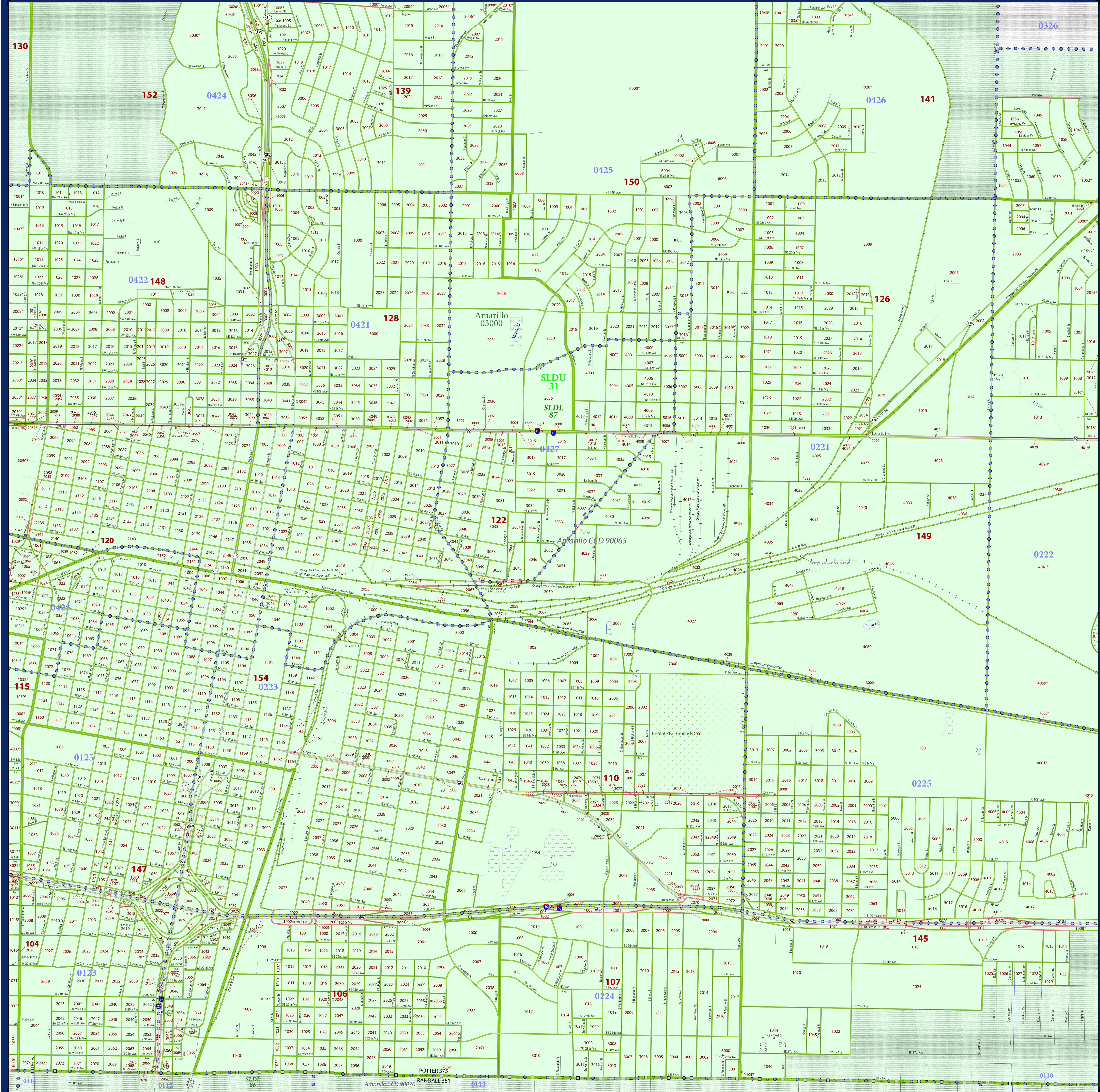


# P.L. 94-171 COUNTY BLOCK MAP (2010 CENSUS): Potter County, TX



### LEGEND

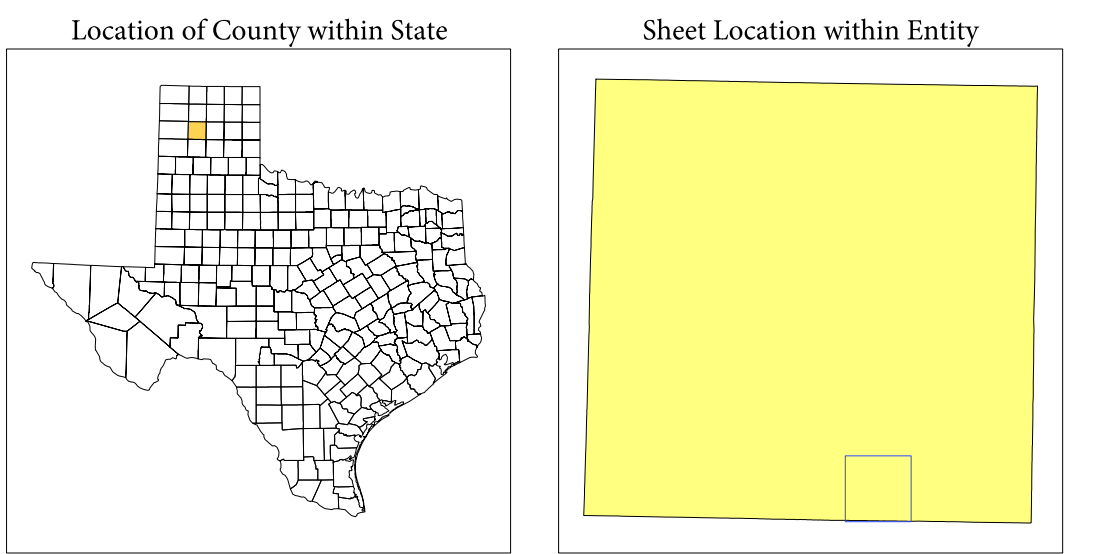
SYMBOL DESCRIPTION	SYMBOL	SYMBOL	DESCRIPTION	SYMBOL
Federal American Indian Reservation	*****	L'ANSE RES 1880	Geographic Offset or Corridor	
Off-Reservation Trust Land, Hawaiian Home Land	+++++	T1880	Water Body	Blue Area
Oklahoma Tribal Statistical Area, Alaska Native Village Statistical Area, Tribal Designated Statistical Area	*****	KAG OTSA 5340	Swamp, Marsh, or Gravel Pit/Quarry	Blue Swatch
American Indian Tribal Subdivision	*****	EAGLE NEST DIST 200	Glacier	Blue Swatch
State American Indian Reservation	//////	Tama Res 4125	Military	Blue Swatch
State Designated Tribal Statistical Area	*****	Lumbee STSA 9815	National or State Park, Forest, or Recreation Area	Blue Swatch
Alaska Native Regional Corporation	▼▼▼▼▼	NANA ANRC 52120	Airport	Blue Swatch
State (or statistically equivalent entity)	//////	NEW YORK 36	Selected Mountain Peaks	Blue Swatch
County (or statistically equivalent entity)	□□□□□	ERIE 029	Inset Area	Blue Swatch
Minor Civil Division (MCD)	○ ○ ○ ○ ○	Bristol town 07485	Outside Subject Area	Blue Swatch
Census County Division (CCD), Census Subarea (CSA), Unorganized Territory (UT)	○ ○ ○ ○ ○	Jemez CCD 91650		
Consolidated City	○ ○ ○ ○ ○	MILFORD 47500		
Incorporated Place 1,2	Color Swatch	Davis 18100		
Census Designated Place (CDP)	Color Swatch	Incline Village 35100		
Voting District (VTD)	Color Swatch	100015		
State Legislative District - Upper (Senate)	Color Swatch	SLDU 14		
State Legislative District - Lower (House)	Color Swatch	SLDL 26		
Census Tract	Color Swatch	33.07		
Census Block	Color Swatch	3012		

Where state, county, and/or MCD/CCD boundaries coincide, the map shows the boundary symbol for only the highest-ranking of these boundaries. Where American Indian reservation and American Indian tribal subdivision boundaries coincide, the map shows only the American Indian reservation boundaries. Where Oklahoma tribal statistical area boundaries and American Indian tribal subdivision boundaries coincide, the map shows only the Oklahoma tribal statistical area boundaries.

1 A "\*" following an MCD name denotes a false MCD. A "\*" following a place name indicates that a false MCD exists with the same name and FIPS code as the place; the false MCD label is not shown.

2 Place label color correlates to the place fill color.

3 A "\*" following a block number indicates that the block number is repeated elsewhere in the block.

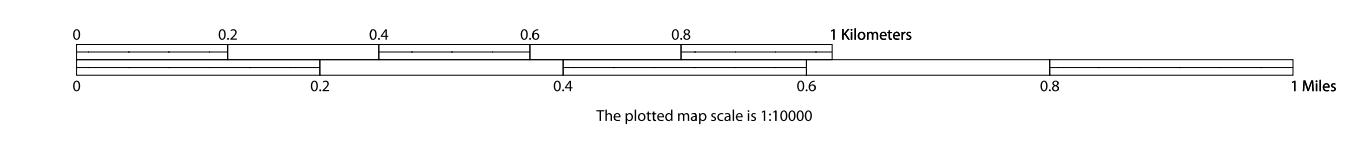


All legal boundaries and names are as of January 1, 2010. The boundaries shown on this map are for Census Bureau statistical data collection and tabulation purposes only; their depiction and designation for statistical purposes does not constitute a determination of jurisdictional authority or rights of ownership or entitlement.

Geographic: Vintage: 2010 Census (reference date: January 1, 2010)  
Data Source: U.S. Census Bureau's MAI/TIGER database (TIGER0148)  
Map Created by Geography Division: December 14, 2010

U.S. DEPARTMENT OF COMMERCE Economics and Statistics Administration U.S. Census Bureau

Projection: Albers Equal Area Conic  
Datum: NAD 83  
Spheroid: GRS 80  
1st Standard Parallel: 27 36 51  
2nd Standard Parallel: 34 43 24  
Central Meridian: -100 04 35  
Latitude of Projection's Origin: 25 50 13  
False Easting: 0  
False Northing: 0



Inset Sheet A3  
Total Sheets: 24  
Index Sheets: 1  
Parent Sheets: 16  
Inset Sheets: 7

NAME: Potter County (375)  
ENTITY TYPE: County or statistically equivalent entity  
ST: Texas (48)

2010 PL. BLOCK MAP (INSET)  
2010-05-28-03