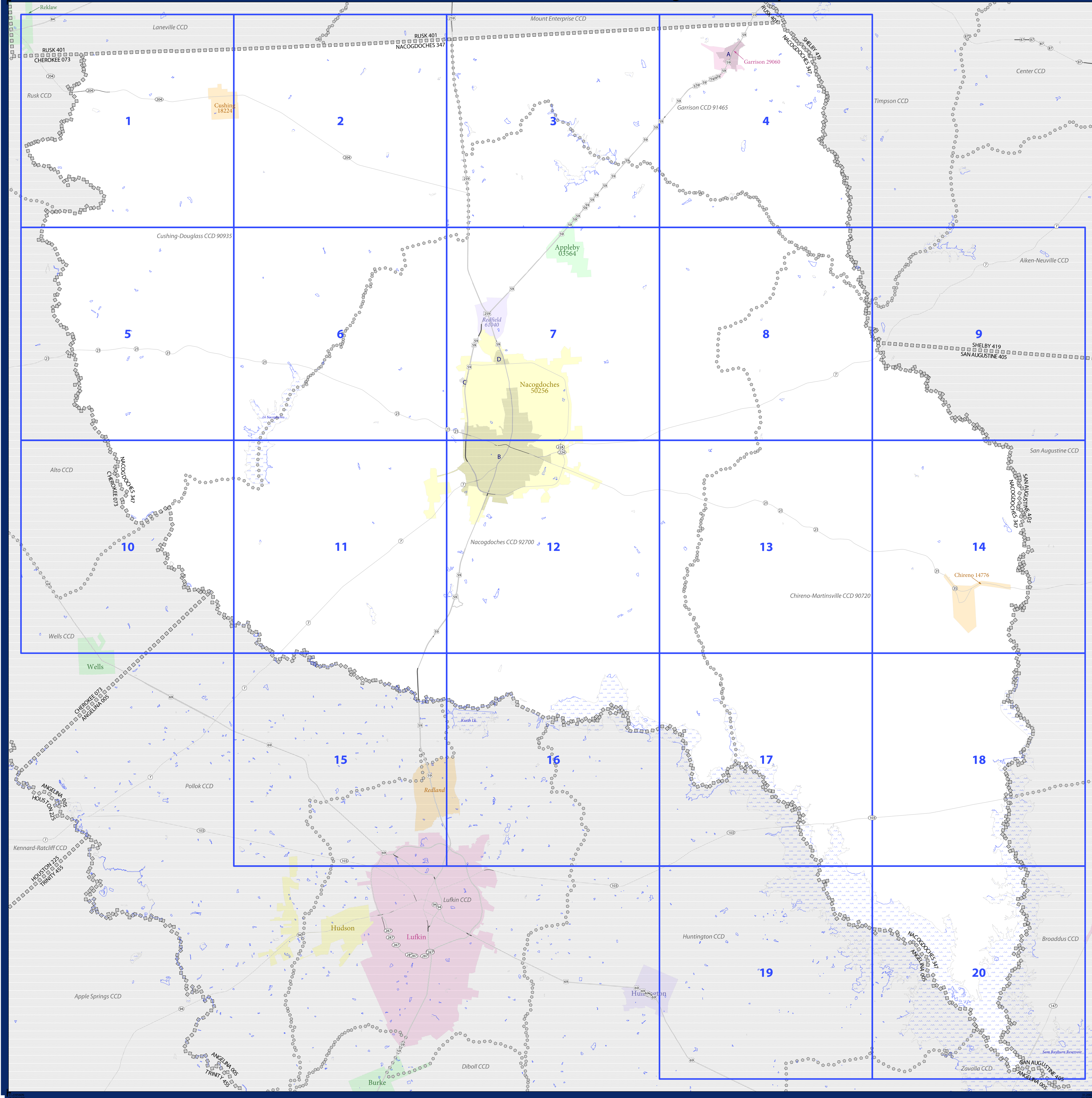


P.L. 94-171 COUNTY BLOCK MAP (2010 CENSUS): Nacogdoches County, TX



SYMBOL DESCRIPTION		LEGEND	
Federal American Indian Reservation	*****	L'ANSE RES 1880	
Off-Reservation Trust Land, Hawaiian Home Land	+++++	T1880	
Oklahoma Tribal Statistical Area, Alaska Native Village Statistical Area, Tribal Designated Statistical Area	●●●●●	KAW OTSA 5340	
American Indian Tribal Subdivision	●●●●●	EAGLE NEST DIST 200	
State American Indian Reservation	//////	Tama Res 4125	
State Designated Tribal Statistical Area	◆◆◆◆◆	Lumbee STSA 9815	
Alaska Native Regional Corporation	▼▼▼▼▼	NANA ANRC 52120	
State (or statistically equivalent entity)		NEW YORK 36	
County (or statistically equivalent entity)	□□□□□	ERIE 029	
Minor Civil Division (MCD) ¹	○ ○ ○ ○ ○	Bristol town 07485	
Census County Division (CCD), Census Subarea (CSA), Unorganized Territory (UT)	○ ○ ○ ○ ○	Jemez CCD 91650	
Consolidated City	○ ○ ○ ○ ○	MILFORD 47500	
Incorporated Place ^{1,2}	■ ■ ■ ■ ■	Davis 18100	
Census Designated Place (CDP) ²	■ ■ ■ ■ ■	Incline Village 35100	
Voting District (VTD)	● ● ● ● ●	100015	
State Legislative District - Upper (Senate)	■ ■ ■ ■ ■	SLDU 14	
State Legislative District - Lower (House)	▼ ▼ ▼ ▼ ▼	SLDL 26	
Census Tract	■ ■ ■ ■ ■	33.07	
Census Block ³	■ ■ ■ ■ ■	3012	

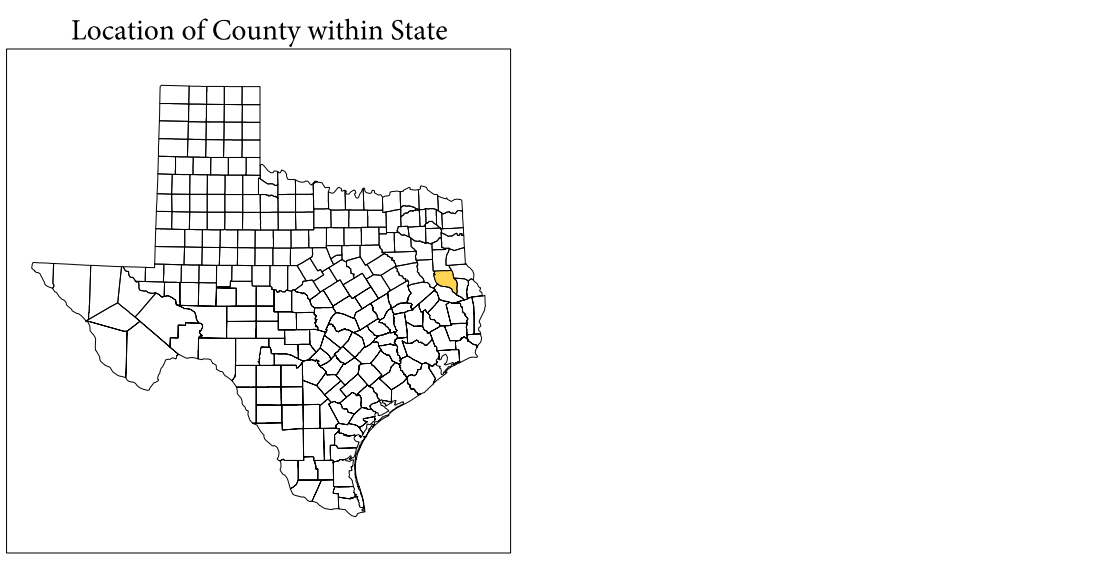
Where state, county, and/or MCD/CCD boundaries coincide, the map shows the boundary symbol for only the highest-ranking of these boundaries. Where American Indian reservation and American Indian tribal subdivision boundaries coincide, the map shows only the American Indian reservation boundaries. Where Oklahoma tribal statistical area boundaries and American Indian tribal subdivision boundaries coincide, the map shows only the Oklahoma tribal statistical area boundaries.

1 A * following an MCD name denotes a false MCD. A * following a place name indicates that a false MCD exists with the same name and FIPS code as the place; the false MCD label is not shown.

2 Place label color correlates to the place fill color.

3 A * following a block number indicates that the block number is repeated elsewhere in the block.

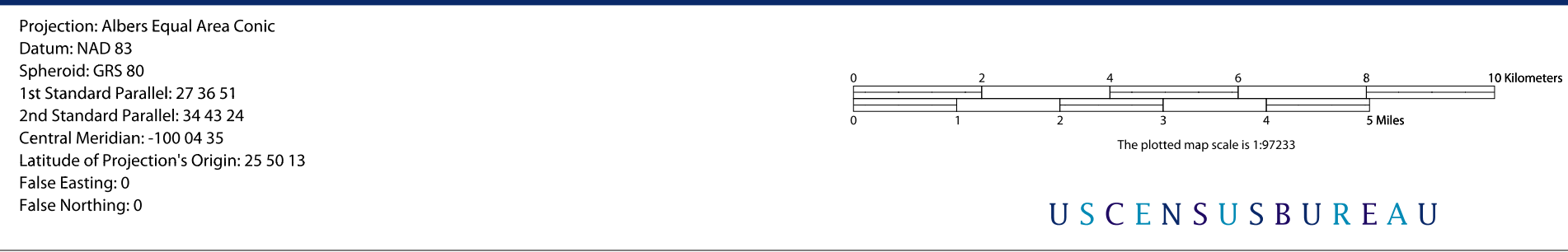
DESCRIPTION	SYMBOL	DESCRIPTION	SYMBOL
Interstate	— 1 —	Geographic Offset or Corridor	—
U.S. Highway	— 2 —	Water Body	—
State Highway	— 3 —	Swamp, Marsh, or Gravel Pit/Quarry	—
Other Road	— 4 —	Marsh Lot	—
Cul-de-sac	— 5 —	Glacier	—
Circle	— 6 —	Military	—
4WD Trail, Stairway, Alley, Walkway, or Ferry	— 7 —	National or State Park, Forest, or Reservation Area	—
Railroad	— 8 —	Airport	—
Pipeline or Power Line	— 9 —	Selected Mountain Peaks	—
Ridge or Fence	— 10 —	Inset Area	—
Property Line	— 11 —	Outside Subject Area	—
Perennial Stream	— 12 —		
Intermittent Stream	— 13 —		
Nonvisible Boundary or Feature Not Elsewhere Classified	— 14 —		



All legal boundaries and names are as of January 1, 2010. The boundaries shown on this map are for Census Bureau statistical data collection and tabulation purposes only; their depiction and designation for statistical purposes does not constitute a determination of jurisdictional authority or rights of ownership or entitlement.

Geographic Vintage: 2010 Census (reference date: January 1, 2010)
 Data Source: U.S. Census Bureau's MAINTENANCE database (TAB100148)
 Map Created by Geography Division: December 14, 2010

U.S. DEPARTMENT OF COMMERCE Economics and Statistics Administration U.S. Census Bureau



INDEX SHEET
 Total Sheets: 27
 Index Sheets: 1
 Parent Sheets: 20
 Inset Sheets: 6

NAME: Nacogdoches County (347)
 ENTITY TYPE: County or statistically equivalent entity
 ST: Texas (48)

2010 PL BLOCK MAP INDEX
 2010483700