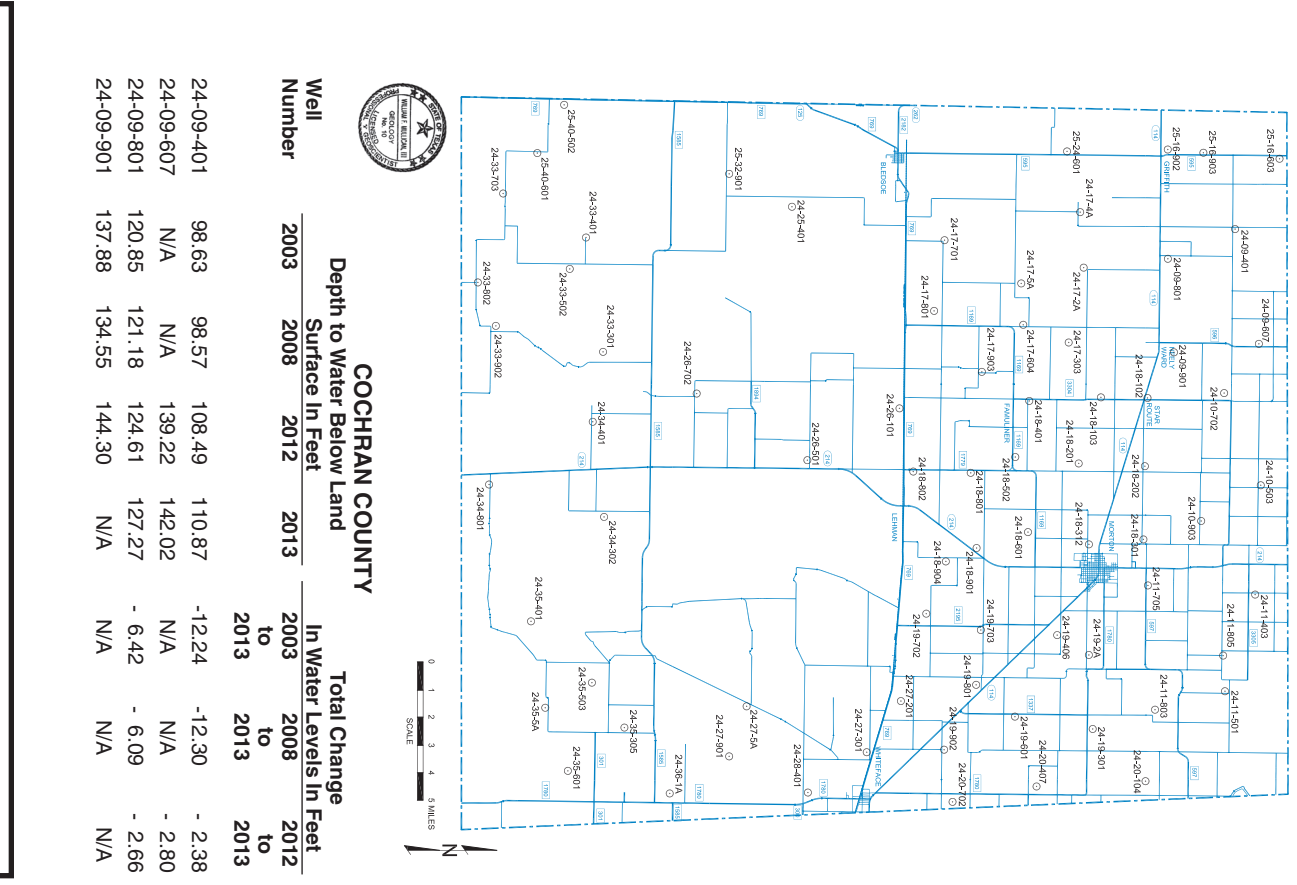


THE CROSS SECTION (USPS 664-920)
HIGH PLAINS UNDERGROUND WATER CONSERVATION DISTRICT NO. 1
2930 AVENUE Q
LUBBOCK TX 79411-2499
MAY 2013 ISSUE
 Address Service Requested

PERIODICALS PERMIT

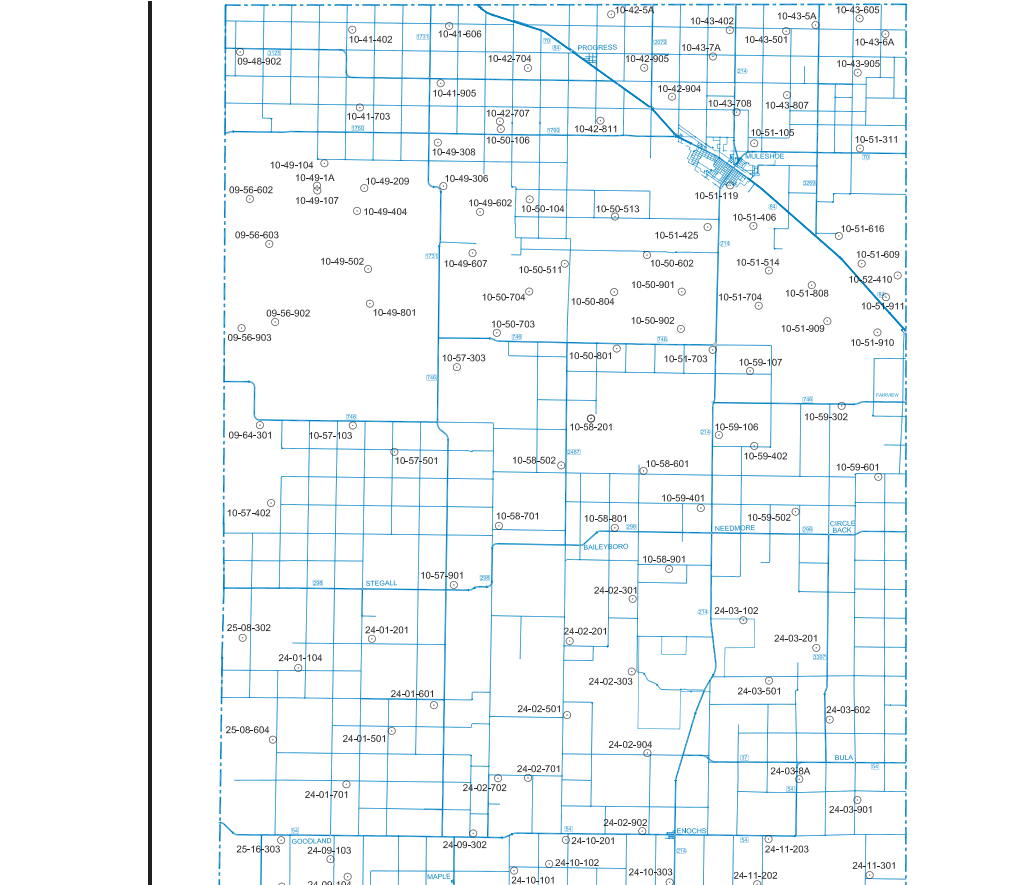


Well Number	Depth to Water Below Land Surface In Feet				Total Change In Water Levels In Feet
	2003	2008	2012	2013	
24-08-001	86.57	108.49	110.07	-1.24	-2.80
24-08-002	86.57	108.49	110.07	-1.24	-2.80
24-08-003	121.18	124.61	127.27	-0.42	-6.09
24-08-004	121.18	124.61	127.27	-0.42	-6.09
24-08-005	137.85	134.55	144.30	N/A	-2.86

Well Number	Depth to Water Below Land Surface In Feet				Total Change In Water Levels In Feet
	2003	2008	2012	2013	
24-10-503	100.23	99.98	99.72	0.66	-0.06
24-10-504	115.49	112.60	114.83	-2.40	-1.52
24-10-505	97.16	96.76	96.95	0.75	-0.23
24-10-506	123.03	122.15	126.33	-4.18	-0.82
24-10-507	123.03	122.15	126.33	-4.18	-0.82

Well Number	Depth to Water Below Land Surface In Feet				Total Change In Water Levels In Feet
	2003	2008	2012	2013	
24-11-901	108.23	108.23	108.23	0.00	0.00
24-11-902	108.23	108.23	108.23	0.00	0.00
24-11-903	108.23	108.23	108.23	0.00	0.00
24-11-904	108.23	108.23	108.23	0.00	0.00
24-11-905	108.23	108.23	108.23	0.00	0.00

Well Number	Depth to Water Below Land Surface In Feet				Total Change In Water Levels In Feet
	2003	2008	2012	2013	
24-12-101	108.23	108.23	108.23	0.00	0.00
24-12-102	108.23	108.23	108.23	0.00	0.00
24-12-103	108.23	108.23	108.23	0.00	0.00
24-12-104	108.23	108.23	108.23	0.00	0.00
24-12-105	108.23	108.23	108.23	0.00	0.00



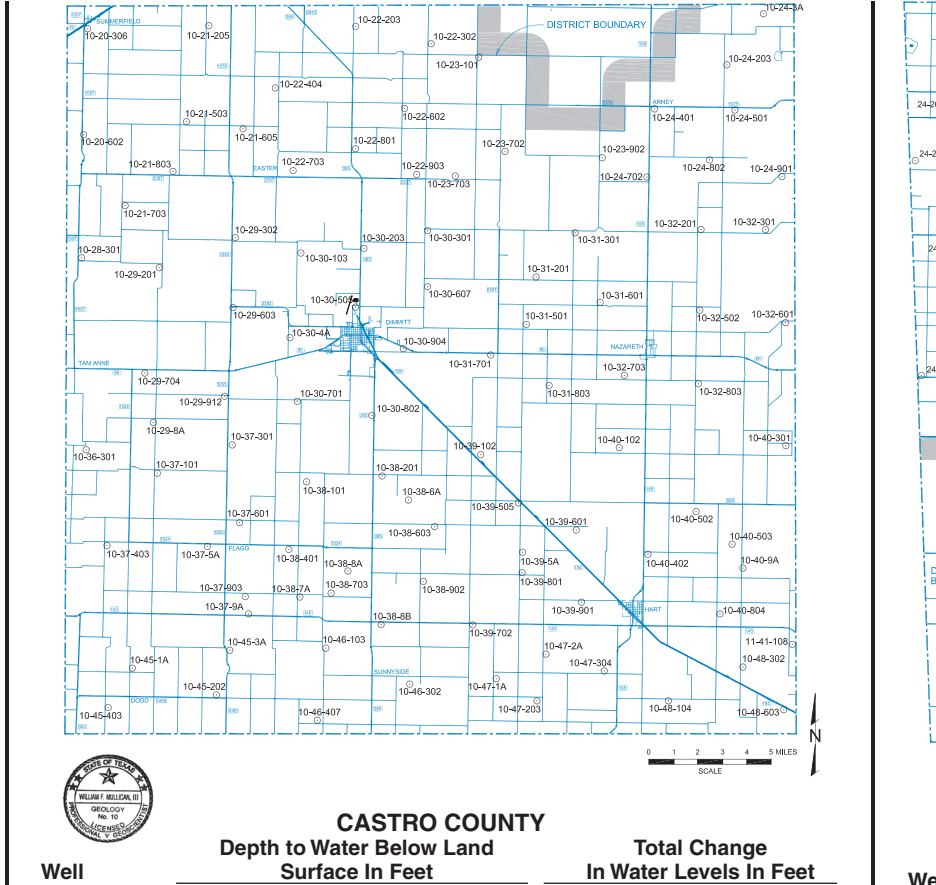
Well Number	Depth to Water Below Land Surface In Feet				Total Change In Water Levels In Feet
	2003	2008	2012	2013	
09-48-702	217.78	222.30	233.14	-14.64	-10.12
09-48-703	217.78	222.30	233.14	-14.64	-10.12
09-48-704	217.78	222.30	233.14	-14.64	-10.12
09-48-705	217.78	222.30	233.14	-14.64	-10.12
09-48-706	217.78	222.30	233.14	-14.64	-10.12

Well Number	Depth to Water Below Land Surface In Feet				Total Change In Water Levels In Feet
	2003	2008	2012	2013	
09-48-707	217.78	222.30	233.14	-14.64	-10.12
09-48-708	217.78	222.30	233.14	-14.64	-10.12
09-48-709	217.78	222.30	233.14	-14.64	-10.12
09-48-710	217.78	222.30	233.14	-14.64	-10.12
09-48-711	217.78	222.30	233.14	-14.64	-10.12

Well Number	Depth to Water Below Land Surface In Feet				Total Change In Water Levels In Feet
	2003	2008	2012	2013	
24-13-101	108.23	108.23	108.23	0.00	0.00
24-13-102	108.23	108.23	108.23	0.00	0.00
24-13-103	108.23	108.23	108.23	0.00	0.00
24-13-104	108.23	108.23	108.23	0.00	0.00
24-13-105	108.23	108.23	108.23	0.00	0.00

Well Number	Depth to Water Below Land Surface In Feet				Total Change In Water Levels In Feet
	2003	2008	2012	2013	
24-14-101	108.23	108.23	108.23	0.00	0.00
24-14-102	108.23	108.23	108.23	0.00	0.00
24-14-103	108.23	108.23	108.23	0.00	0.00
24-14-104	108.23	108.23	108.23	0.00	0.00
24-14-105	108.23	108.23	108.23	0.00	0.00

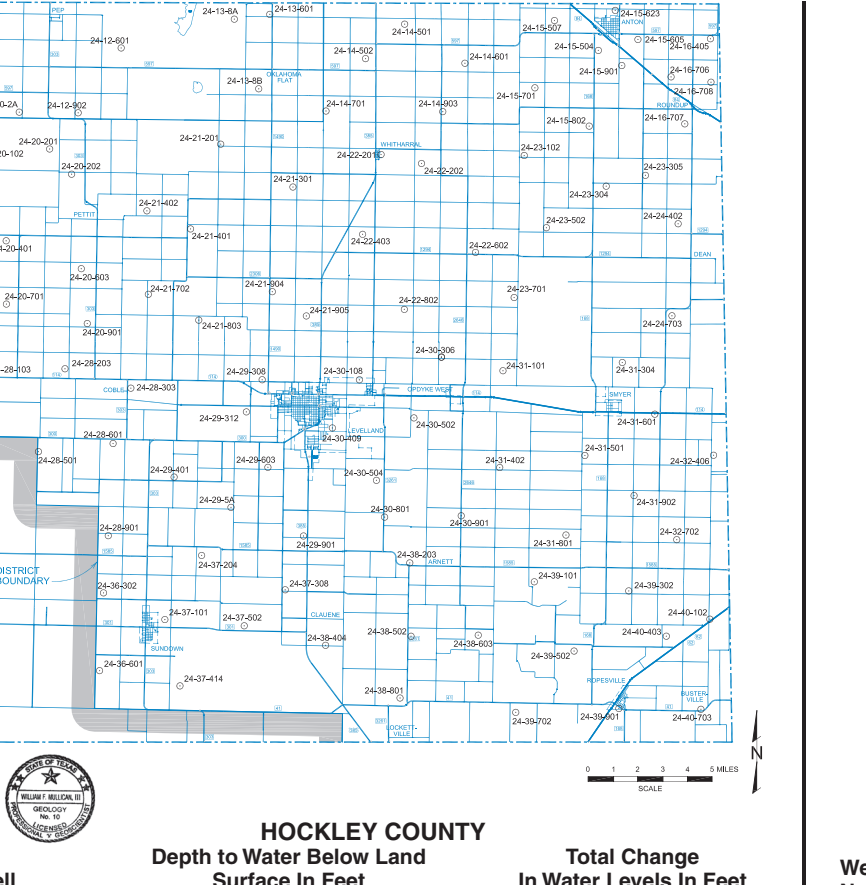
Well Number	Depth to Water Below Land Surface In Feet				Total Change In Water Levels In Feet
	2003	2008	2012	2013	
24-15-101	108.23	108.23	108.23	0.00	0.00
24-15-102	108.23	108.23	108.23	0.00	0.00
24-15-103	108.23	108.23	108.23	0.00	0.00
24-15-104	108.23	108.23	108.23	0.00	0.00
24-15-105	108.23	108.23	108.23	0.00	0.00



Well Number	Depth to Water Below Land Surface In Feet				Total Change In Water Levels In Feet
	2003	2008	2012	2013	
10-20-306	N/A	N/A	249.73	N/A	N/A
10-20-307	N/A	N/A	229.48	230.66	-1.18
10-21-205	249.57	257.56	253.89	254.47	-4.90
10-21-206	232.30	243.61	242.06	242.93	-10.63
10-21-207	117.01	117.01	162.00	163.24	-7.24

Well Number	Depth to Water Below Land Surface In Feet				Total Change In Water Levels In Feet
	2003	2008	2012	2013	
10-21-208	N/A	N/A	249.57	N/A	N/A
10-21-209	N/A	N/A	229.48	230.66	-1.18
10-21-210	N/A	N/A	249.57	N/A	N/A
10-21-211	N/A	N/A	229.48	230.66	-1.18
10-21-212	N/A	N/A	249.57	N/A	N/A

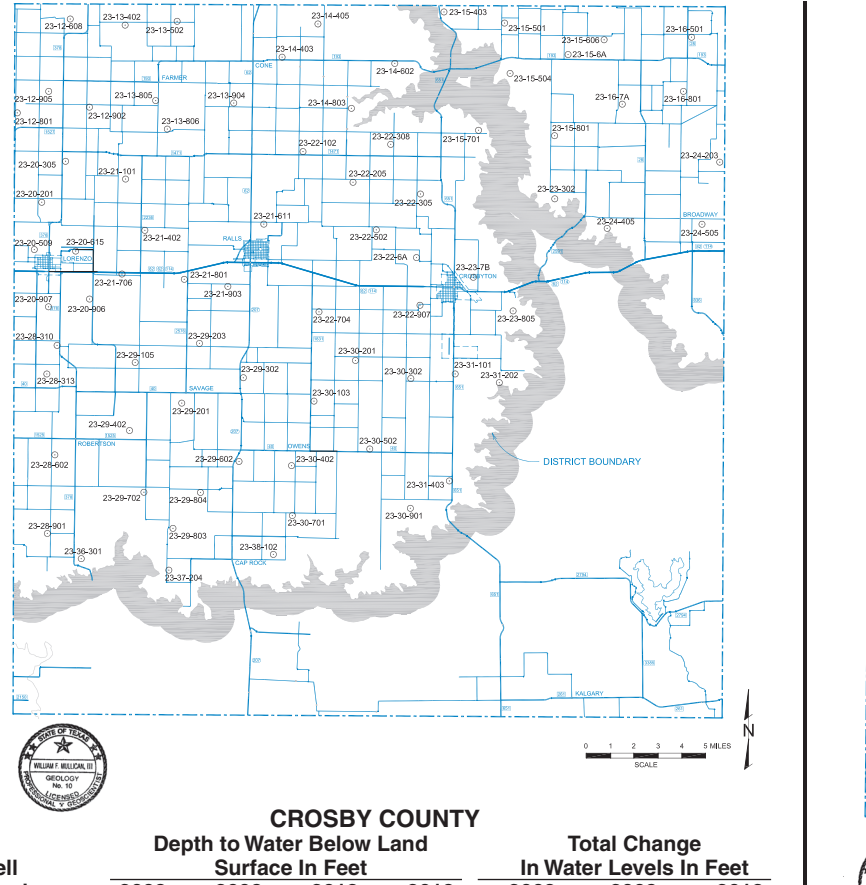
Well Number	Depth to Water Below Land Surface In Feet				Total Change In Water Levels In Feet
	2003	2008	2012	2013	
11-21-401	130.15	127.11	127.39	126.61	+3.54
11-21-402	130.15	127.11	127.39	126.61	+3.54
11-21-403	130.15	127.11	127.39	126.61	+3.54
11-21-404	130.15	127.11	127.39	126.61	+3.54
11-21-405	130.15	127.11	127.39	126.61	+3.54



Well Number	Depth to Water Below Land Surface In Feet				Total Change In Water Levels In Feet
	2003	2008	2012	2013	
24-12-601	31.73	31.55	N/A	N/A	N/A
24-12-602	31.73	31.55	N/A	N/A	N/A
24-12-603	31.73	31.55	N/A	N/A	N/A
24-12-604	31.73	31.55	N/A	N/A	N/A
24-12-605	31.73	31.55	N/A	N/A	N/A

Well Number	Depth to Water Below Land Surface In Feet				Total Change In Water Levels In Feet
	2003	2008	2012	2013	
24-12-606	31.73	31.55	N/A	N/A	N/A
24-12-607	31.73	31.55	N/A	N/A	N/A
24-12-608	31.73	31.55	N/A	N/A	N/A
24-12-609	31.73	31.55	N/A	N/A	N/A
24-12-610	31.73	31.55	N/A	N/A	N/A

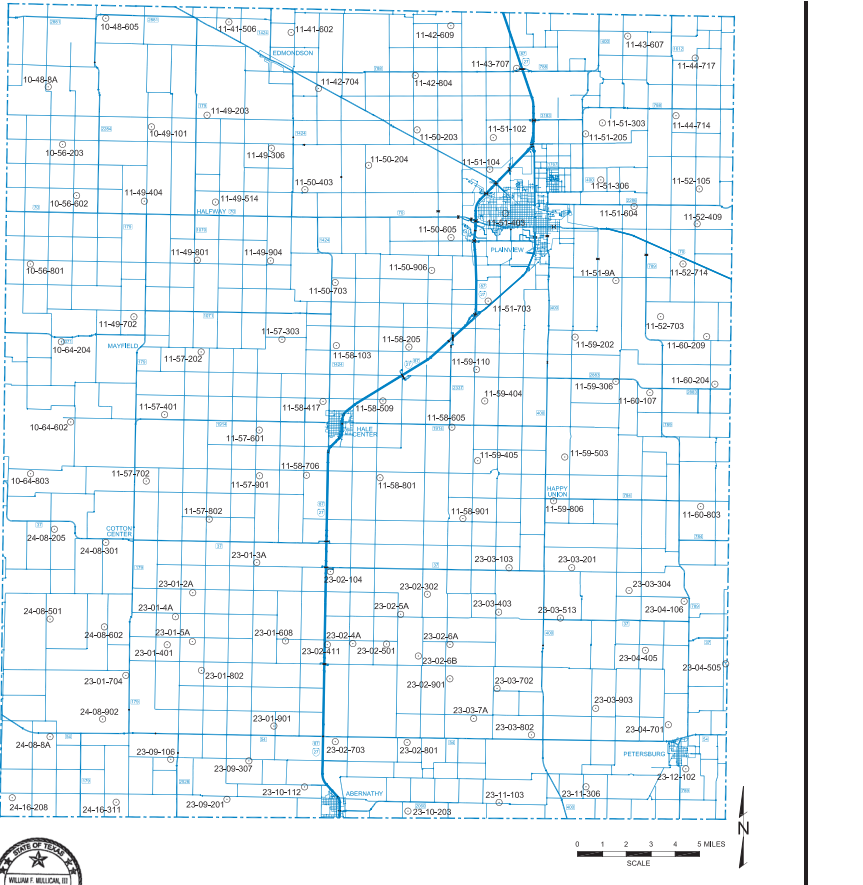
Well Number	Depth to Water Below Land Surface In Feet				Total Change In Water Levels In Feet
	2003	2008	2012	2013	
24-12-611	31.73	31.55	N/A	N/A	N/A
24-12-612	31.73	31.55	N/A	N/A	N/A
24-12-613	31.73	31.55	N/A	N/A	N/A
24-12-614	31.73	31.55	N/A	N/A	N/A
24-12-615	31.73	31.55	N/A	N/A	N/A



Well Number	Depth to Water Below Land Surface In Feet				Total Change In Water Levels In Feet
	2003	2008	2012	2013	
23-12-808	N/A	265.79	275.52	275.67	-9.88
23-12-809	N/A	265.79	275.52	275.67	-9.88
23-12-810	N/A	265.79	275.52	275.67	-9.88
23-12-811	N/A	265.79	275.52	275.67	-9.88
23-12-812	N/A	265.79	275.52	275.67	-9.88

Well Number	Depth to Water Below Land Surface In Feet				Total Change In Water Levels In Feet
	2003	2008	2012	2013	
23-12-813	N/A	265.79	275.52	275.67	-9.88
23-12-814	N/A	265.79	275.52	275.67	-9.88
23-12-815	N/A	265.79	275.52	275.67	-9.88
23-12-816	N/A	265.79	275.52	275.67	-9.88
23-12-817	N/A	265.79	275.52	275.67	-9.88

Well Number	Depth to Water Below Land Surface In Feet				Total Change In Water Levels In Feet
	2003	2008	2012	2013	
23-12-818	N/A	265.79	275.52	275.67	-9.88
23-12-819	N/A	265.79	275.52	275.67	-9.88
23-12-820	N/A	265.79	275.52	275.67	-9.88
23-12-821	N/A	265.79	275.52	275.67	-9.88
23-12-822	N/A	265.79	275.52	275.67	-9.88



Well Number	Depth to Water Below Land Surface In Feet				Total Change In Water Levels In Feet
	2003	2008	2012	2013	
10-48-005	232.81	243.79	259.90	265.41	-32.60
10-48-006	232.81	243.79	259.90	265.41	-32.60
10-48-007	232.81	243.79	259.90	265.41	-32.60
10-48-008	232.81	243.79	259.90	265.41	-32.60
10-48-009	232.81	243.79	259.90	265.41	-32.60

Well Number	Depth to Water Below Land Surface In Feet				Total Change In Water Levels In Feet
	2003	2008	2012	2013	
10-48-010	232.81	243.79	259.90	265.41	-32.60
10-48-011	232.81	243.79	259.90	265.41	-32.60
10-48-012	232.81	243.79	259.90	265.41	-32.60
10-48-013	232.81	243.79	259.90	265.41	-32.60
10-48-014	232.81	243.79	259.90	265.41	-32.60

Well Number	Depth to Water Below Land Surface In Feet				Total Change In Water Levels In Feet
	2003	2008	2012	2013	
10-48-015	232.81	243.79	259.90	265.41	-32.60
10-48-016	232.81	243.79	259.90	265.41	-32.60
10-48-017	232.81	243.79	259.90	265.41	-32.60
10-48-018	232.81	243.79	259.90	265.41	-32.60
10-48-019	232.81	243.79	259.90	265.41	-32.60

NOTE: N/A Denotes data not available.

NOTE: N/A Denotes data not available.

NOTE: N/A Denotes data not available.

NOTE: N/A Denotes data not available.

NOTE: N/A Denotes data not available.

NOTE: N/A Denotes data not available.

NOTE: N/A Denotes data not available.

THE CROSS SECTION

A MONTHLY PUBLICATION OF THE HIGH PLAINS UNDERGROUND WATER CONSERVATION DISTRICT NO. 1, LUBBOCK, TX

MAY 2013

THERE IS NO SUBSTITUTE FOR WATER

DOMESTIC

MUNICIPAL

AGRICULTURAL

CONSERVATION

Rate of groundwater level decline slows despite continuation of drought

By William F. Mulhean III, P.E.

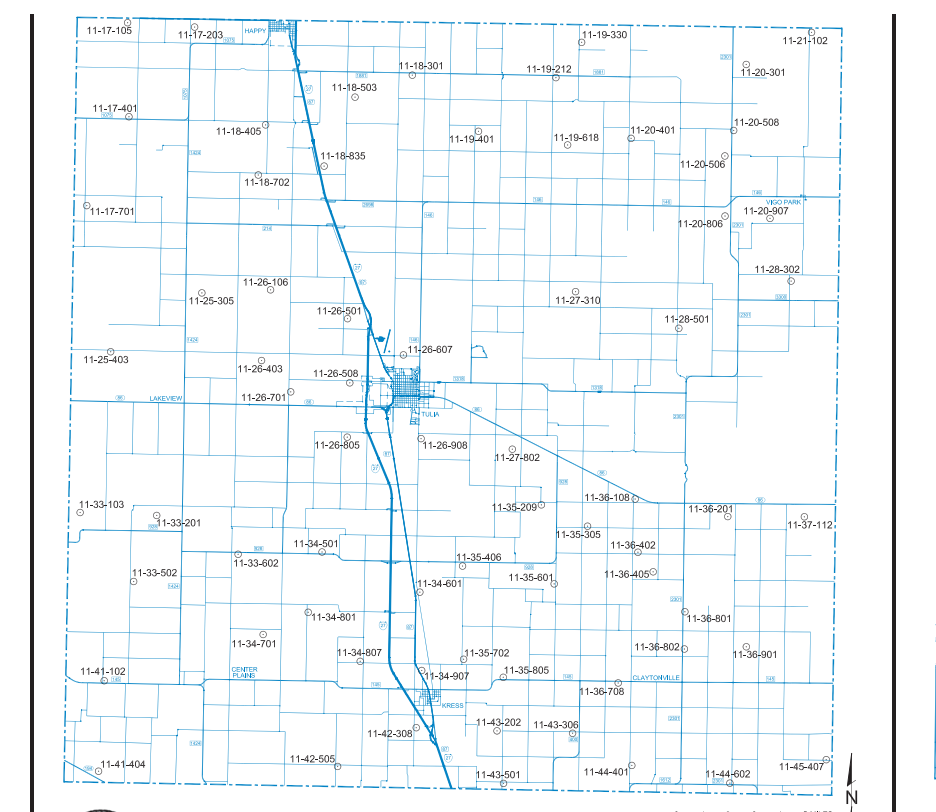
Despite a continuation of extreme to exceptional drought conditions across the High Plains, the rate of decline in the Ogallala aquifer water table has slowed significantly since the beginning of 2012. In fact, the average rate of decline in the Ogallala aquifer water table decreased to 1.87 feet per foot of decline in 2012.

In this edition of *The Cross Section*, water level measurements from 1,355 observation wells recorded from December 1, 2012 through March 15, 2013 are reported.

This time last year, we were reporting on the highest average declines in the Ogallala aquifer water table since the beginning of 2012. The average rate of decline in the Ogallala aquifer water table measurements during 2012 was 2.25 feet per foot of decline. This year, the average decline per well over the last year being Partner County (2.99 feet) and Castro County (2.99 feet) are reported.

It is important to the HPWCD to also report long-term trends in water levels within the district. Recent measurements show the following average changes in depth to water within the district:

County	Average Annual Change From 2003 to 2013 (Feet/Year)	Average Annual Change From 2008 to 2013 (Feet/Year)	Average Annual Change From 2012 to 2013 (Feet/Year)
Armstrong	1.0	+0.44	-0.11
Bailey	1.15	-1.38	-1.95
Castro	1.00	-2.72	-2.63
Cochran	0.75	-1.02	-0.87
Crosby	0.88	-0.79	-1.61
Deal Smith	1.03	-0.82	-1.46
Floyd	1.19	-1.51	-2.10
Hale	1.19	-1.51	-2.10
Hockley	0.97	-0.60	-0.94
Lamb	1.30	-1.56	-2.09
Lubbock	1.32	-0.43	-1.26
Lynn	0.78	+0.01	-0.54
Panther	1.07	-1.99	-2.60



Well Number	Depth to Water Below Land Surface In Feet				Total Change In Water Levels In Feet			
	2003	2008	2012	2013	2003 to 2013	2008 to 2013	2012 to 2013	2013 to 2013
11-17-105	186.62	188.10	N/A	198.84	-12.22	-10.74	N/A	N/A
11-17-203	80.49	177.88	N/A	N/A	N/A	N/A	N/A	N/A
11-17-401	124.03	124.36	125.04	125.17	-1.14	-0.81	-0.13	-0.13
11-17-701	194.88	N/A	194.60	195.50	-0.62	N/A	-0.90	-0.90
11-18-301	120.27	121.57	121.37	123.46	-2.19	-1.89	-2.09	-2.09
11-18-405	114.07	N/A	N/A	121.67	-7.60	N/A	N/A	N/A
11-18-503	116.18	115.56	117.06	117.20	-1.02	-1.64	-0.14	-0.14
11-18-835	154.75	152.02	155.20	158.38	-3.93	-6.36	-3.18	-3.18
11-19-212	105.70	111.73	105.81	106.10	-0.40	-1.73	-0.29	-0.29
11-19-332	82.22	82.22	81.93	82.16	-0.06	-0.06	-0.23	-0.23
11-19-401	157.37	158.22	159.46	160.89	-3.52	-2.67	-1.43	-1.43
11-19-618	103.78	106.82	106.82	109.09	-5.31	-2.27	-0.47	-0.47
11-20-301	95.92	93.85	95.80	97.10	-1.18	-3.25	-1.30	-1.30
11-20-401	110.16	110.76	110.48	100.53	+0.63	+0.23	-0.05	-0.05
11-20-506	103.51	123.21	108.83	111.60	-6.50	+1.61	-2.77	-2.77
11-20-508	114.12	112.24	109.84	112.26	-1.76	-4.98	-2.42	-2.42
11-20-606	163.78	167.49	170.45	169.14	-5.36	-1.65	+1.31	+1.31
11-20-907	162.19	178.60	163.08	168.08	-0.89	-16.78	-2.98	-2.98
11-21-102	104.17	107.87	104.10	104.42	-2.55	+3.45	-0.02	-0.02
11-25-305	164.88	N/A	N/A	165.34	-0.25	N/A	N/A	N/A
11-25-403	116.58	115.92	119.13	119.38	-0.27	-1.86	-2.25	-2.25
11-26-106	170.67	N/A	172.15	172.38	-1.71	N/A	-0.23	-0.23
11-26-403	118.82	118.99	116.83	116.53	+1.49	+2.46	+0.30	+0.30
11-26-501	165.18	N/A	167.33	168.30	-3.12	N/A	-0.97	-0.97
11-26-508	118.29	124.73	121.60	124.22	-5.93	+0.51	-2.62	-2.62
11-26-702	157.72	N/A	202.91	202.98	-4.36	N/A	-0.07	-0.07
11-26-701	112.74	114.49	115.23	N/A	N/A	N/A	N/A	N/A
11-26-805	169.97	172.27	N/A	N/A	N/A	N/A	N/A	N/A
11-26-908	146.12	148.49	150.20	151.22	-5.10	-2.73	-1.02	-1.02
11-27-310	136.60	147.57	141.60	141.80	-3.20	-5.77	-2.00	-2.00
11-27-802	139.94	134.24	134.50	134.46	-0.52	-0.20	+0.34	+0.34
11-28-302	80.39	81.98	84.22	84.14	-5.25	-0.74	-0.08	-0.08
11-28-501	108.08	119.54	N/A	113.99	-5.91	+5.55	N/A	N/A
11-33-103	232.25	233.28	248.10	251.56	-19.31	-14.18	-3.84	-3.84
11-33-201	201.30	207.32	207.32	208.16	-6.86	-3.04	-0.86	-0.86
11-33-502	276.60	284.85	297.80	301.98	-26.38	-17.13	-4.18	-4.18
11-34-301	229.06	N/A	230.94	N/A	-1.28	N/A	N/A	N/A
11-34-601	164.03	N/A	164.54	164.82	-0.78	N/A	-0.27	-0.27
11-34-701	292.15	N/A	300.93	303.83	-8.79	N/A	-2.89	-2.89
11-34-801	186.63	N/A	199.07	199.76	-13.13	-13.13	-0.69	-0.69
11-34-907	246.42	N/A	253.98	254.86	-6.44	N/A	-0.88	-0.88
11-34-907	196.67	N/A	195.27	195.66	-4.63	-3.40	-1.23	-1.23
11-35-209	160.91	163.40	166.28	166.92	-5.02	-3.52	-0.64	-0.64
11-35-305	130.78	133.00	134.70	135.63	-4.85	-2.63	-0.93	-0.93
11-35-406	150.42	149.47	N/A	154.42	-2.00	-5.15	N/A	N/A
11-35-601	191.28	N/A	191.04	191.12	+0.16	N/A	-0.08	-0.08
11-35-702	264.25	N/A	262.94	263.88	-1.77	-0.94	-0.83	-0.83
11-35-805	144.68	142.89	141.37	141.31	+3.37	+1.58	+0.06	+0.06
11-36-108	87.76	88.34	86.75	88.16	-0.40	+0.18	-1.41	-1.41
11-36-201	156.67	N/A	N/A	N/A	N/A	N/A	N/A	N/A
11-36-402	153.16	153.75	153.83	153.56	-0.40	+0.19	+0.27	+0.27
11-36-405	154.40	155.03	157.39	157.40	-3.00	-2.37	-0.01	-0.01
11-36-501	174.34	N/A	183.79	186.91	-9.57	N/A	-3.12	-3.12
11-36-802	127.61	133.84	N/A	132.36	-4.75	+1.48	N/A	N/A
11-36-901	160.06	161.67	166.90	169.56	-9.50	-7.89	-2.66	-2.66
11-37-112	118.24	N/A	119.42	120.37	-2.13	N/A	-0.95	-0.95
11-41-402	264.25	N/A	263.93	263.94	N/A	-0.34	-0.01	-0.01
11-41-404	241.92	N/A	266.29	269.98	-28.06	N/A	-3.69	-3.69
11-42-308	217.19	N/A	224.96	225.33	-8.14	N/A	-0.34	-0.34
11-42-505	271.22	N/A	283.06	285.70	-14.48	N/A	-2.67	-2.67
11-43-202	145.38	145.16	145.95	146.76	-1.38	-1.60	-0.81	-0.81
11-43-306	196.47	138.08	139.97	140.08	-3.61	-2.00	-1.11	-1.11
11-43-403	146.97	N/A	151.67	147.70	-2.72	N/A	-2.72	-2.72
11-44-401	235.53	232.19	235.65	234.57	-3.04	-2.38	-1.08	-1.08
11-44-602	228.58	N/A	235.40	236.69	-6.11	N/A	-1.29	-1.29
11-45-407	228.60	233.88	232.12	234.05	-5.45	-0.17	-1.93	-1.93

NOTE: N/A Denotes data not available

Production reports due June 1 to district
Continued From Page One

are also available for downloading/printing on the HPWD web site at www.hpwd.com/meter-forms, said Gerald Crenwedge, field data coordinator.

Owners and operators of confined animal feeding operations (CAFOs) can report their groundwater use on a special form available through the district office and on the web site.

The paper forms will be accepted by mail, fax (806-762-1834), or e-mail (hpwd@hpwd.com).

Persons also have the option of submitting production reports on-line at www.hpwd.com/og-meter-entry. This special web site features a quick reference tool that gives step-by-step instructions on how to enter the required data and submit it to the Water District," Crenwedge said.

He encourages persons to contact the HPWD office if they have questions or need assistance with data entry.

"They can call (806) 762-0181 to speak with district staff or they can visit the HPWD office at 2930 Avenue Q in Lubbock. We encourage folks to submit this information as soon as possible. By doing so, district staff can help with any data entry concerns prior to the June 1 reporting deadline," Crenwedge said.

A moratorium on enforcement and civil penalties for failure to submit production reports is in effect for calendar years 2013 and 2014. This was approved by the HPWD Board of Directors to give persons time to become acquainted with the groundwater reporting process.

Well Number	Depth to Water Below Land Surface In Feet				Total Change In Water Levels In Feet			
	2003	2008	2012	2013	2003 to 2013	2008 to 2013	2012 to 2013	2013 to 2013
09-24-302	290.85	289.91	291.16	292.65	-1.80	-2.74	-1.49	-1.49
09-24-601	330.65	329.74	326.54	327.22	+3.43	+2.52	-0.68	-0.68
09-24-603	335.61	314.32	314.58	315.44	-4.72	-9.12	-8.86	-8.86
09-24-901	N/A	299.20	301.35	305.00	N/A	-5.80	-3.41	-3.41
09-32-305	N/A	N/A	320.90	321.74	N/A	N/A	-0.84	-0.84
09-32-502	381.22	394.76	407.02	412.28	-31.06	-17.52	-5.26	-5.26
09-32-601	348.55	339.46	366.11	367.16	-21.21	-13.00	-3.65	-3.65
09-40-201	343.81	350.44	356.33	357.63	-13.82	-7.19	-1.30	-1.30
09-40-911	385.15	393.10	398.58	400.07	-14.92	-6.97	-1.49	-1.49
09-48-305	315.38	327.92	353.08	354.49	-11.81	-26.57	-1.41	-1.41
09-56-306	N/A	N/A	360.20	358.88	N/A	N/A	+1.32	+1.32
10-11-901	289.10	287.17	316.68	326.96	-8.46	-4.79	-7.90	-7.90
10-17-501	260.30	259.84	263.03	262.22	-1.92	-2.38	-0.30	-0.30
10-17-602	191.30	190.97	191.11	194.89	-3.59	-3.92	-2.78	-2.78
10-17-904	N/A	214.77	224.66	223.82	N/A	-9.05	-2.16	-2.16
10-18-204	300.85	299.33	297.78	297.70	+1.5	-1.63	-0.08	-0.08
10-18-302	255.30	248.79	245.52	249.12	-1.18	-0.33	-0.60	-0.60
10-18-504	278.10	277.29	286.72	287.17	-1.33	+0.52	-0.05	-0.05
10-18-602	296.98	294.14	292.82	292.65	+3.33	+1.49	+0.17	+0.17
10-18-701	237.48	234.78	234.34	234.36	+1.42	+0.42	-0.02	-0.02
10-18-801	189.10	189.10	189.10	189.10	-2.11	N/A	N/A	N/A
10-19-101	296.83	295.76	N/A	298.33	-2.50	-2.57	N/A	N/A
10-19-202	324.74	324.07	331.34	332.60	-5.86	-8.53	-1.26	-1.26
10-19-301	281.46	280.31	282.00	282.37	-0.91	-2.06	-0.37	-0.37
10-19-404	250.17	258.17	261.20	263.22	-3.31	-5.05	-2.02	-2.02
10-19-601	301.34	301.82	310.20	310.42	-12.08	-11.60	-0.30	-0.30
10-19-802	254.74	253.81	257.78	257.59	-4.85	-3.68	-0.19	-0.19
10-20-201	198.35	199.32	200.98	201.29	-2.94	-1.97	-0.31	-0.31
10-20-402	270.99	266.84	271.56	271.43	-4.74	-4.95	-0.13	-0.13
10-20-901	210.63	207.07	208.93	207.02	-0.63	-1.81	-1.31	-1.31
10-25-103	246.68	246.83	245.22	245.10	+0.58	+1.73	+0.12	+0.12
10-25-201	297.92	297.53	294.22	293.92	-3.70	+3.61	+0.30	+0.30
10-25-301	261.99	260.96	260.66	260.84	-1.15	+0.12	-0.02	-0.02
10-25-502	196.85	N/A	201.08	202.91	-4.06	N/A	-1.83	-1.83
10-25-701	332.78	343.09	363.85	365.43	-32.65	-22.34	-1.58	-1.58
10-25-704	N/A	N/A	N/A	360.62	N/A	N/A	-0.66	-0.66
10-25-802	N/A	N/A	295.22	296.48	N/A	N/A	-0.66	-0.66
10-25-914	246.39	251.13	272.22	259.99	-13.60	-8.86	-2.77	-2.77
10-26-102	286.75	286.07	286.00	286.31	-2.56	-0.24	-1.31	-1.31
10-26-202	N/A	N/A	315.49	316.50	N/A	N/A	-1.01	-1.01
10-26-306	N/A	N/A	409.31	410.89	N/A	N/A	-1.58	-1.58
10-26-402	329.45	333.55	335.50	340.16	-10.71	-6.61	-2.61	-2.61
10-26-502	380.65	358.17	362.94	364.76	-14.72	-6.59	-1.82	-1.82
10-26-602	387.99	395.06	403.18	405.61	-17.11	-10.55	-2.43	-2.43
10-26-802	314.82	327.35	345.37	347.90	-33.08	-20.55	-4.33	-4.33
10-27-104	324.75	333.88	340.36	342.22	-17.47	-8.34	-1.86	-1.86
10-27-105	406.04	410.18	415.28	416.95	-10.91	-6.17	-1.67	-1.67
10-27-501	439.76	444.72	453.99	456.55	-16.79	-7.83	-1.63	-1.63
10-27-706	N/A	357.03	N/A	403.35	N/A	-46.32	N/A	N/A
10-27-902	351.47	363.79	385.08	390.36	-38.89	-26.57	-5.28	-5.28
10-28-103	385.42	396.52	398.72	401.36	-15.94	-4.84	-2.64	-2.64
10-28-202	352.24	353.89	356.26	357.49	-5.65	-5.00	-1.17	-1.17
10-28-501	409.12	405.74	416.93	420.31	-11.19	-14.57	-3.38	-3.38
10-28-601	337.57	355.36	N/A	402.94	-65.37	-47.58	N/A	N/A