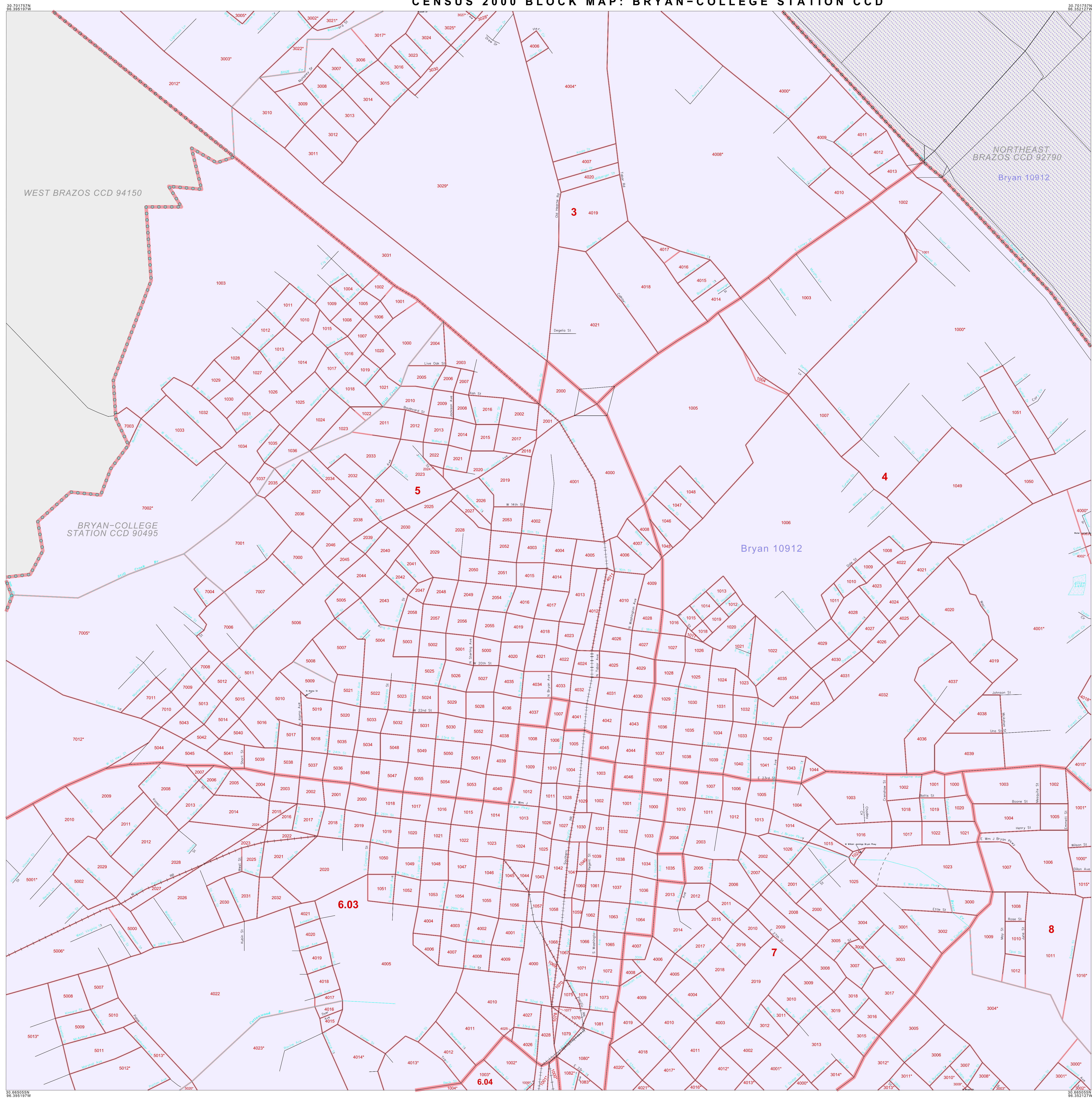


CENSUS 2000 BLOCK MAP: BRYAN-COLLEGE STATION CCD



LEGEND
SYMBOL NAME STYLE
INTERNATIONAL
AIR (FEDERAL)
Trust Land / Home Land
OTSA / TDSA / ANVSA
AIR (State)
SDA/SA
ANRC
STATE (or statistically equivalent entity)
COUNTY (or statistically equivalent entity)
MINOR CIVIL DIV. / CCD¹
Consolidated City
Place within Subject Entity
Incorporated Place / CDP¹
Place outside of Subject Entity
Incorporated Place / CDP¹
Corporate Offset Boundary
Census Tract
BLOCK²
ABBREVIATION REFERENCE: AIR = American Indian Reservation; Trust Land = Off-Reservation Trust Land; Home Land = Hawaiian Home Land; OTSA = Oklahoma Tribal Statistical Area; TDSA = Tribal Designated Statistical Area; ANVSA = Alaska Native Village Statistical Area; SDA/SA = State Designated American Indian Statistical Area; ANRC = Alaska Native Regional Corporation; CDP = Census Designated Place; Minor Civil Div. (MCD) = Minor Civil Division; CCD = Census County Division

Scale bar: 0 to 3 mi / 0 to 4 km. The plotted map scale is 1:5500.
ENTITY TYPE: Census County Division
NAME: Bryan-College Station CCD (90495)
ST: Texas (48)
CO: Brazos Co (041)
Key to Adjacent Sheets: 1 2, 3 4, 5 6 7 8
SHEET 4 OF 14 PARENT SHEETS
TOTAL SHEETS: 15 (Index 1; Parent 14; Inset 0)

All legal boundaries and names are as of January 1, 2000. The boundaries shown on this map are for Census Bureau statistical data collection and tabulation purposes only; their depiction and designation for statistical purposes does not constitute a determination of jurisdictional authority or rights of ownership or entitlement. Source: U.S. Census Bureau's TIGER database (Census 2000). Projection: State-based Albers' Equal Area. U.S. DEPARTMENT OF COMMERCE Economics and Statistics Administration U.S. Census Bureau

