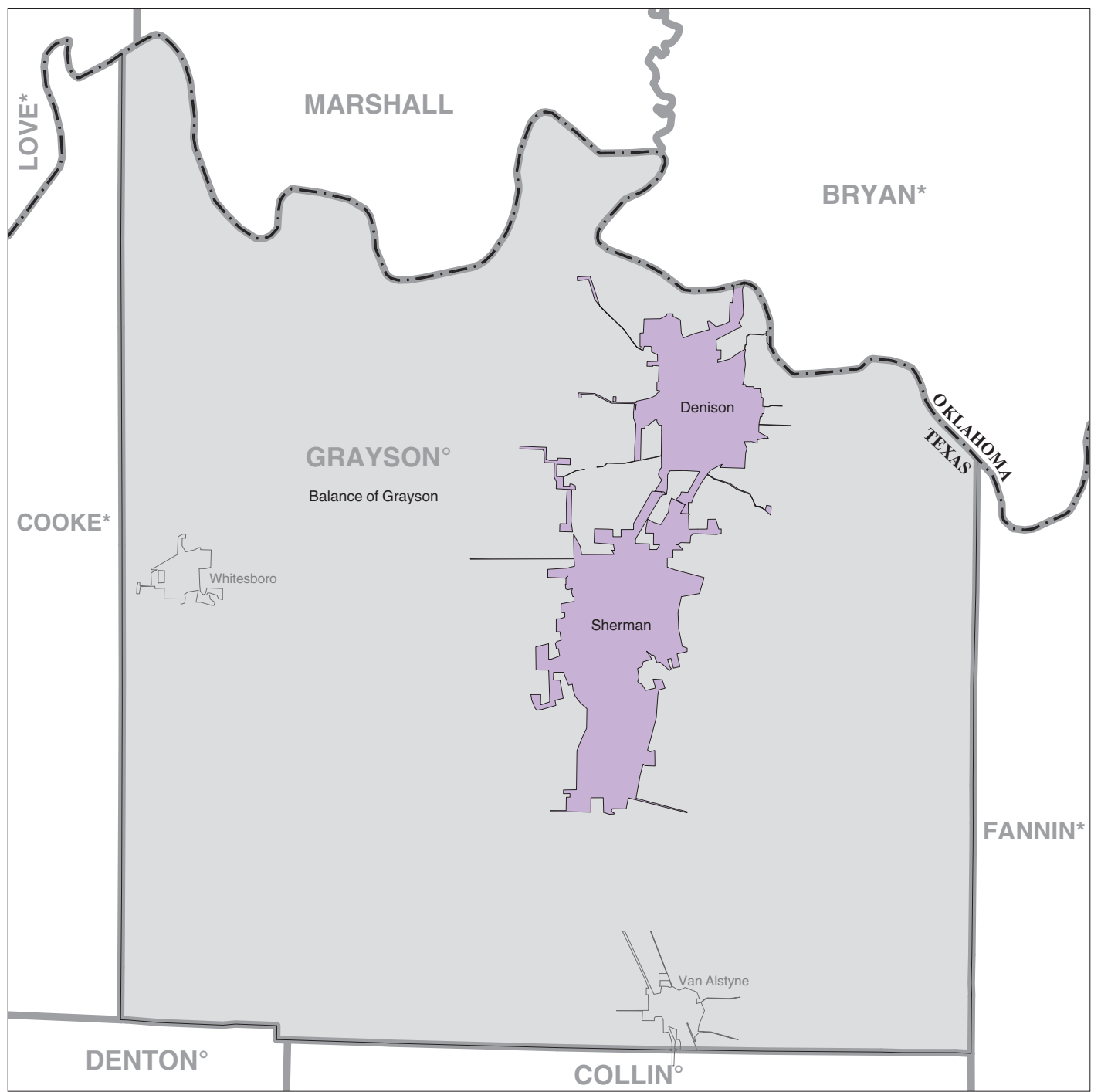


Grayson County, TX – Economic Places

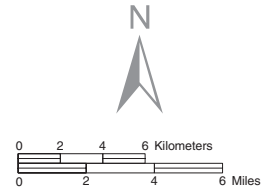


Location in State



Legend

- Places included in 2007 & 2002 Economic Census**
- Hoover Incorporated Place / Minor Civil Division
 - Balance of Jefferson County Remainder
- Places added to the 2007 Economic Census**
- Birmingham Incorporated Places / Minor Civil Division
 - Concord Census Designated Place / Other Statistical Area
- Places dropped for the 2007 Economic Census**
- Irondale Incorporated Place / Minor Civil Division
- Other Boundaries and Features**
- BIBB County or Statistical Equivalent
 - WISCONSIN State
 - CANADA International
 - Lake Michigan Waterbody



A degree (°) denotes that the county or statistical equivalent is in a Metropolitan Statistical Area. An asterisk (*) denotes that the county or statistical equivalent is in a Micropolitan Statistical Area. All boundaries are as of January 1, 2007.