

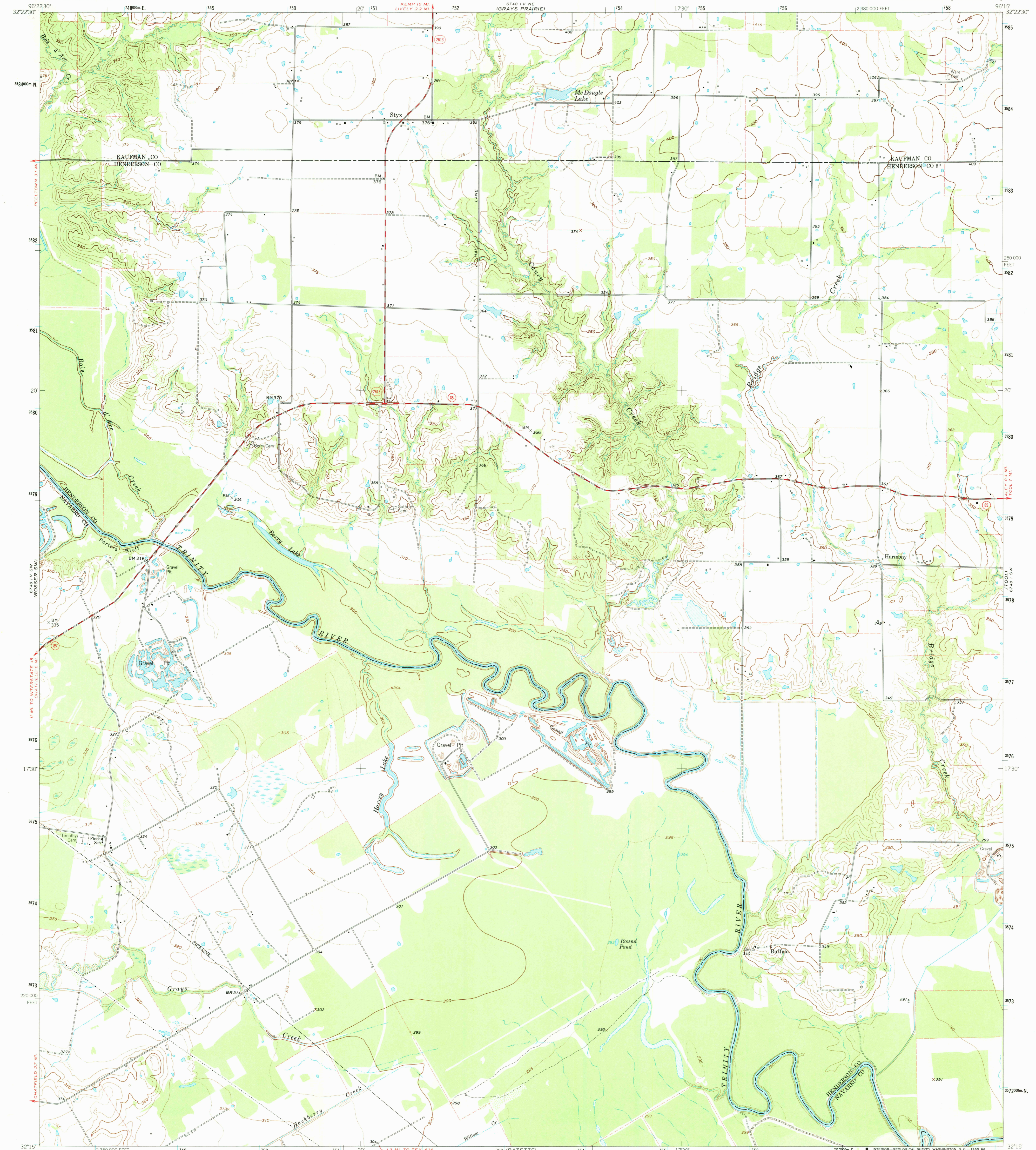
6748 IV NW  
(ROSSER)

UNITED STATES  
DEPARTMENT OF THE INTERIOR  
GEOLOGICAL SURVEY

STATE OF TEXAS  
TEXAS WATER COMMISSION

STYX QUADRANGLE  
TEXAS  
7.5 MINUTE SERIES (TOPOGRAPHIC)

6748 IV NW  
(KEMP)



Mapped, edited, and published by the Geological Survey  
Control by USGS and USCGS  
Topography by photogrammetric methods from aerial  
photographs taken 1960. Field checked 1962  
Polyconic projection. 1927 North American datum  
10,000-foot grid based on Texas coordinate system, north central zone  
1000 meter Universal Transverse Mercator grid ticks,  
zone 14, shown in blue  
Fine red dashed lines indicate selected fence lines

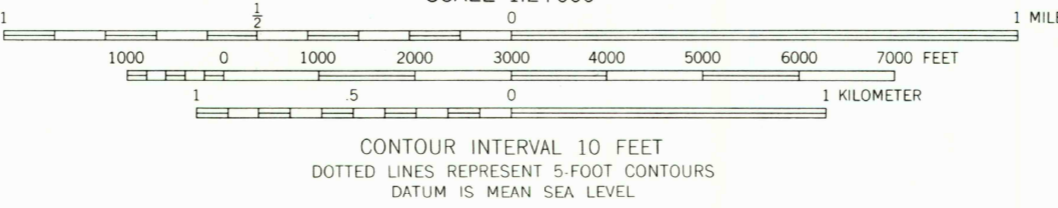
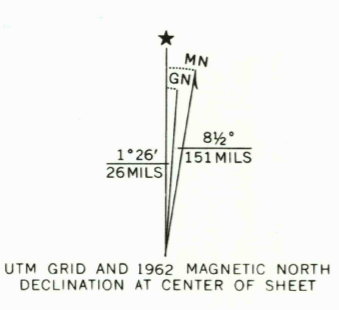
6748 IV SW  
(ROSSER)

6748 IV SW  
(ROSSER)

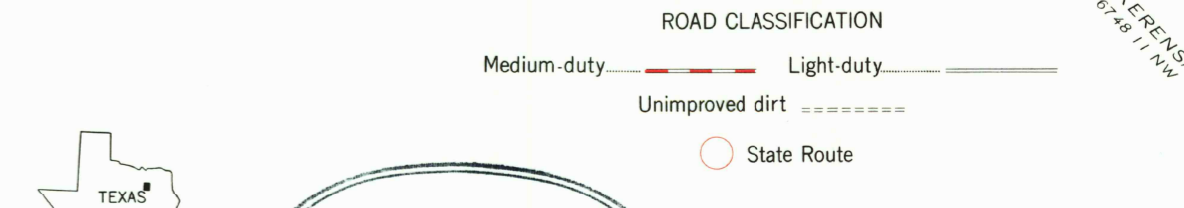
6748 IV SW  
(ROSSER)

6748 IV SW  
(ROSSER)

6748 IV SW  
(ROSSER)



THIS MAP COMPLIES WITH NATIONAL MAP ACCURACY STANDARDS  
FOR SALE BY U.S. GEOLOGICAL SURVEY, DENVER 25, COLORADO OR WASHINGTON 25, D.C.  
A FOLDER DESCRIBING TOPOGRAPHIC MAPS AND SYMBOLS IS AVAILABLE ON REQUEST



STYX, TEX.  
N3215-W9615/7.5  
1962  
AMS 6748 IV SE-SERIES V882

6748 IV NW  
(KEMP)

6748 IV NW  
(KEMP)

6748 IV NW  
(KEMP)

6748 IV NW  
(KEMP)

6748 IV NW  
(KEMP)