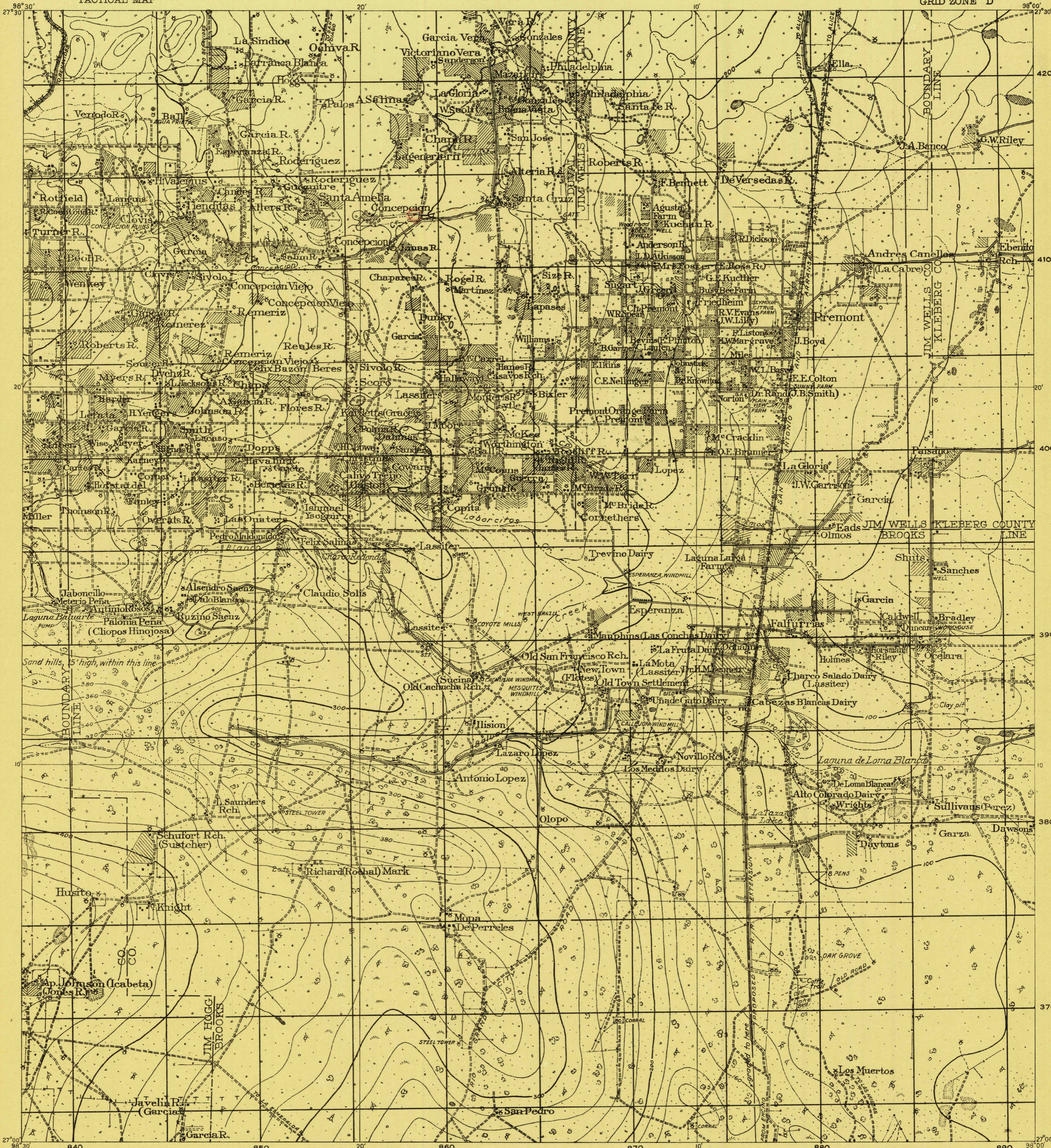


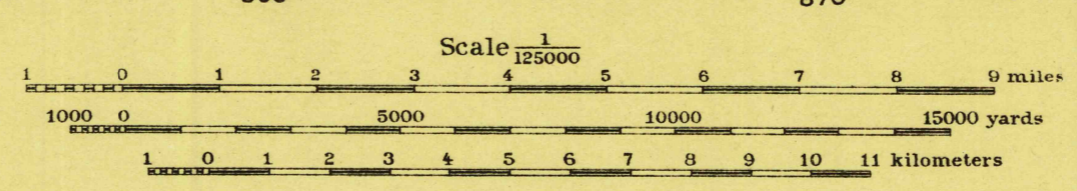
CONTROLLED RECONNAISSANCE
469-S-II & IV

TEXAS
FALFURRIAS QUADRANGLE
GRID ZONE "D"

CORPS OF ENGINEERS, U. S. ARMY
TACTICAL MAP



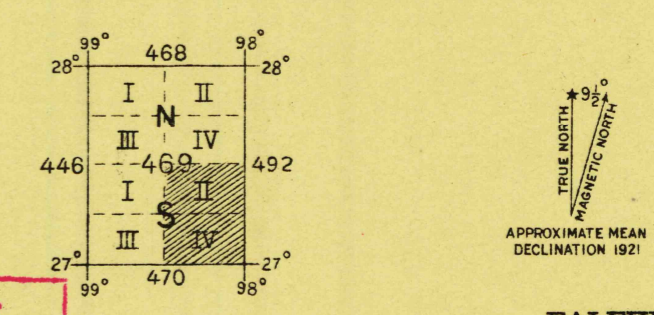
Field work and compilation under the direction of Major Henry H. Robert, Corps of Engineers, U. S. A., Department Engineer, Capt. R. C. Kuldell, Corps of Engineers, U. S. A., Assistant Department Engineer, Southern Department.
Reconnaissance in 1915 - 16 by 1st Lieuts. G. A. Matile, 28th Inf., U. S. A., L. R. Partridge, 3rd Cav., U. S. A., and 2nd Lieuts. J. A. Davies, 17th Inf., U. S. A., R. B. Barnitz, 14th Cav., U. S. A.
Northwest corner of this sheet mapped by 1st Lieut. Frederick Herr, 14th Cav., U. S. A. April - May 1917.
Control: R. R. alignments; profiles and County maps of the General Land Office.



Contour Interval 20 feet
Datum is mean sea level

FIVE THOUSAND YARD GRID COMPUTED FROM "GRID SYSTEM FOR PROGRESSIVE MAPS IN THE U. S." ZONED, U. S. C. & G. S. SPECIAL PUBLICATION NO. 59. (THE LAST THREE DIGITS OF THE GRID NUMBERS ARE OMITTED)

NOTE: OFFICERS USING THIS MAP WILL MARK HEREON CORRECTIONS AND ADDITIONS WHICH COME TO THEIR ATTENTION AND MAIL DIRECT TO "THE CHIEF OF ENGINEERS, WASHINGTON, D. C."



U. S. Dept. of Interior
Div. of Geography
Class. 630 CE 1917
Date

Engineer Reproduction Plant, U. S. Army, Washington Barracks, D. C.

RETURN TO:
USGS NHD HISTORICAL MAP ARCHIVES

FALFURRIAS, TEX.