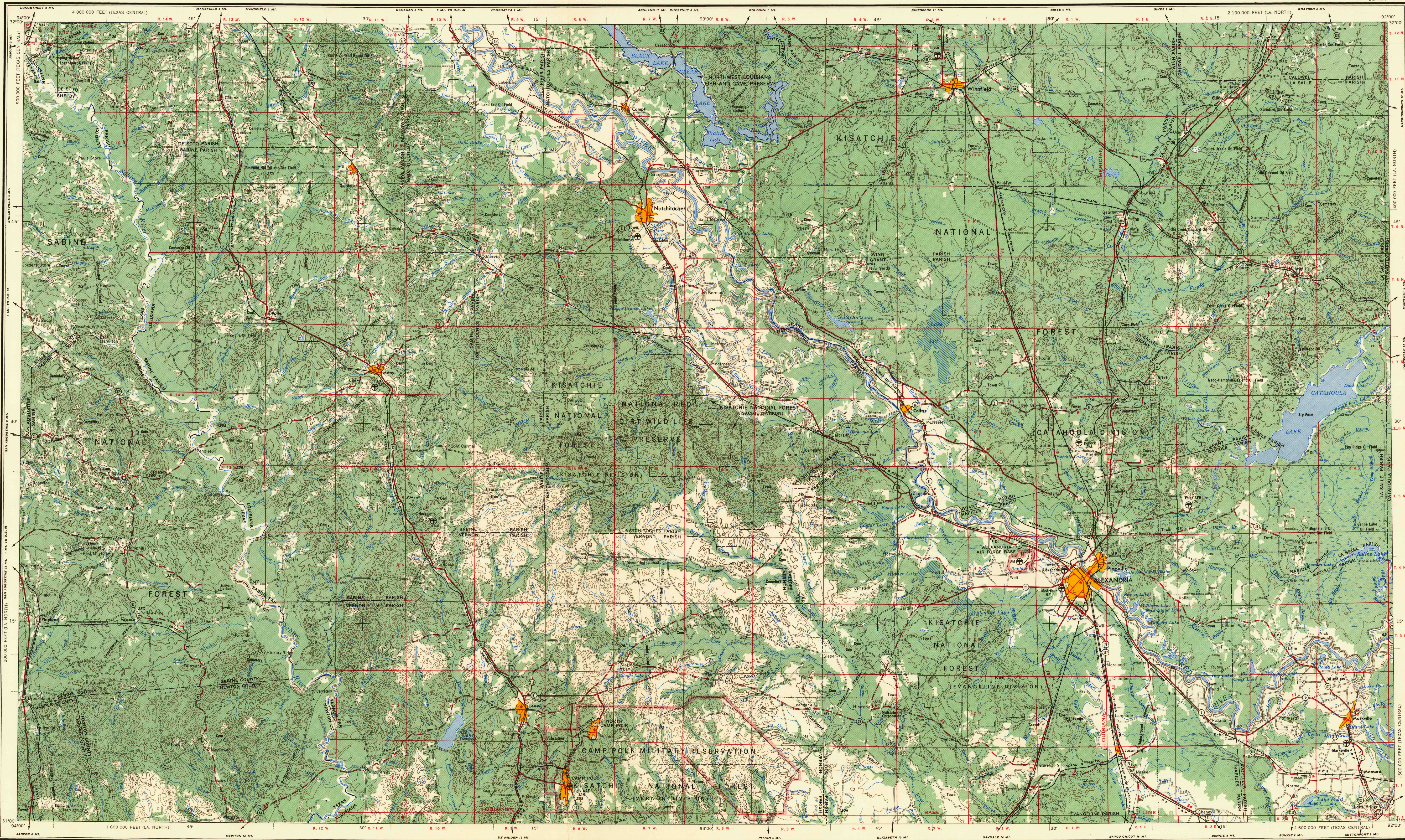


ALEXANDRIA



V502

Prepared by the Army Map Service (AMS), Corps of Engineers, U. S. Army, Washington, D. C. Compiled in 1954 by photogrammetric methods. Horizontal and vertical control by USGS, USC&GS, and Louisiana Geologic Survey. Aerial photography 1953. Photography field annotated 1953.

LEGEND

ROAD DATA 1953
 Figures in red denote approximate distances in miles between stars

POPULATED PLACES

Over 500,000
 100,000 to 500,000
 25,000 to 100,000
 5,000 to 25,000
 1,000 to 5,000
 Less than 1,000

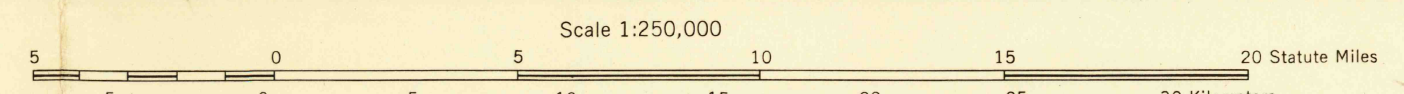
RAILROADS

Standard gauge, Single track Double or Multiple
 Narrow gauge
 BOUNDARIES
 International
 State
 County or Parish
 Park or reservation
 Military reservation

LANDS & LANDS

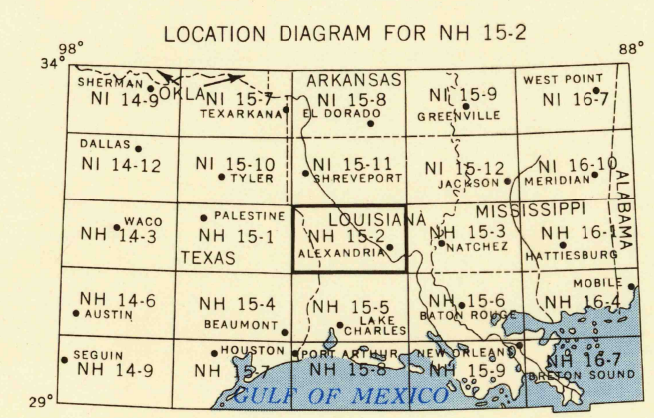
ROADS
 Hard surface, heavy duty
 More than two lanes wide
 Two lanes wide; Federal route marker
 Hard surface, medium duty
 More than two lanes wide
 Two lanes wide; State route marker
 Improved light duty
 Dirt
 Trail

Landmarks: School; Church; Other
 Horizontal control point
 Spot elevation in feet
 Marsh or swamp
 Seaplane anchorage
 Woods-brushwood
 Power line



Scale 1:250,000
 Contour Interval 50 Feet
 WITH SUPPLEMENTARY CONTOURS AT 25 FOOT INTERVALS
 TRANSVERSE MERCATOR PROJECTION
 100,000 FOOT BRIDGE BASED ON LOUISIANA COORDINATE SYSTEM,
 NORTH ZONE, AND TEXAS COORDINATE SYSTEM, CENTRAL ZONE
 1925 MAGNETIC DECLINATION FOR THIS SHEET VARIES FROM 7°45' EASTERLY FOR THE CENTER OF THE WEST
 EDGE TO 6°45' EASTERLY FOR THE CENTER OF THE EAST EDGE. MEAN ANNUAL CHANGE IS 0°00' WESTERLY.

FOR SALE BY U. S. GEOLOGICAL SURVEY, FEDERAL CENTER, DENVER, COLORADO OR WASHINGTON 25, D. C.



PRINTED BY ARMY MAP SERVICE, CORPS OF ENGINEERS, 9-55, 91261-055

U.S.G.S. FILE COPY
 TOPOGRAPHIC DIVISION

SECTIONIZED TOWNSHIP

6	5	4	3	2	1
7	8	9	10	11	12
13	14	15	16	17	18
19	20	21	22	23	24
25	26	27	28	29	30
31	32	33	34	35	36

TOWNSHIP OR RANGE LINE
 LAND GRANT BOUNDARY

U.S.G.S. FILE COPY
 TOPOGRAPHIC DIVISION

Oct. 17, 1955
 Printed by G.M.S. for G.S.
 (3000)