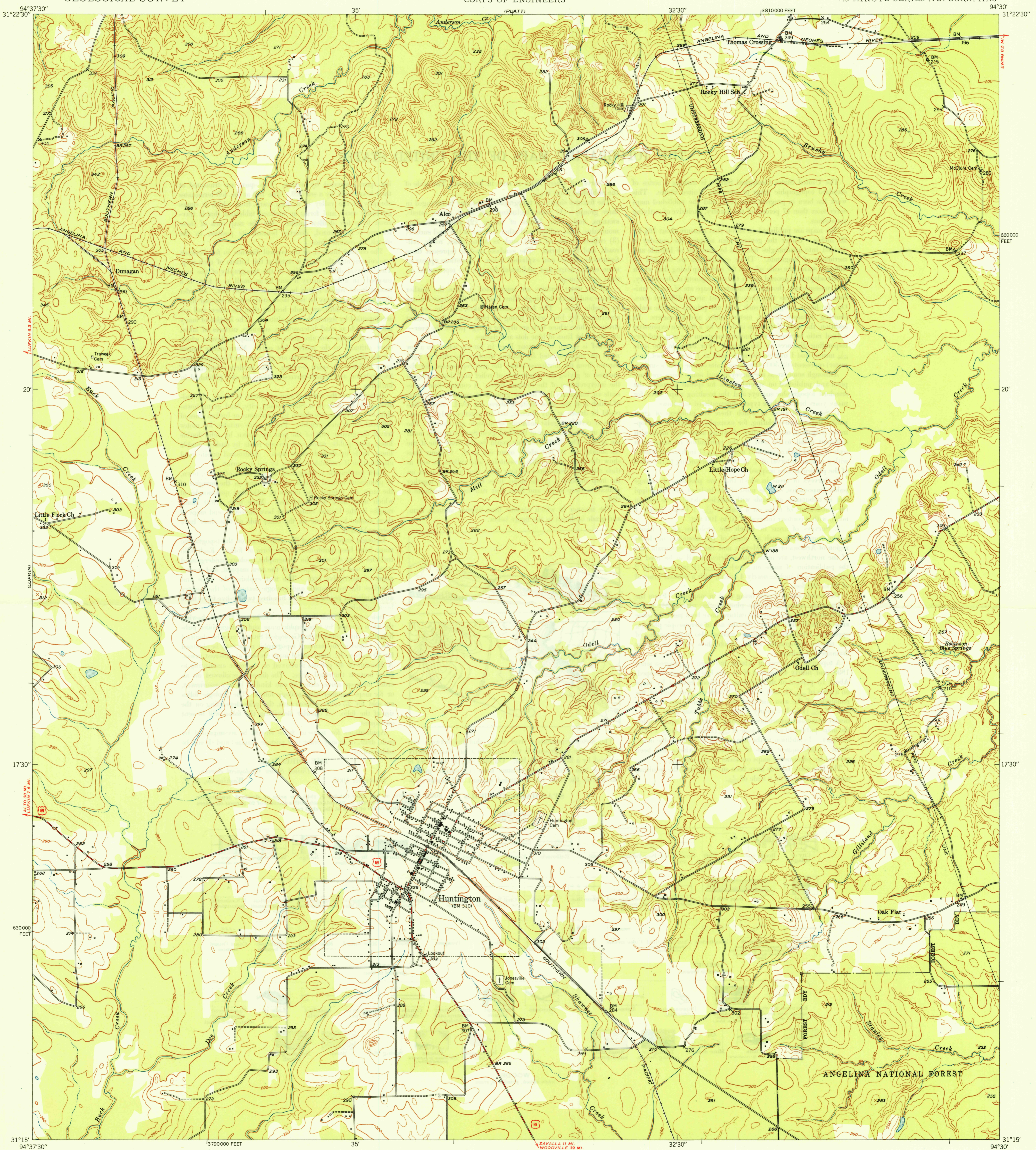
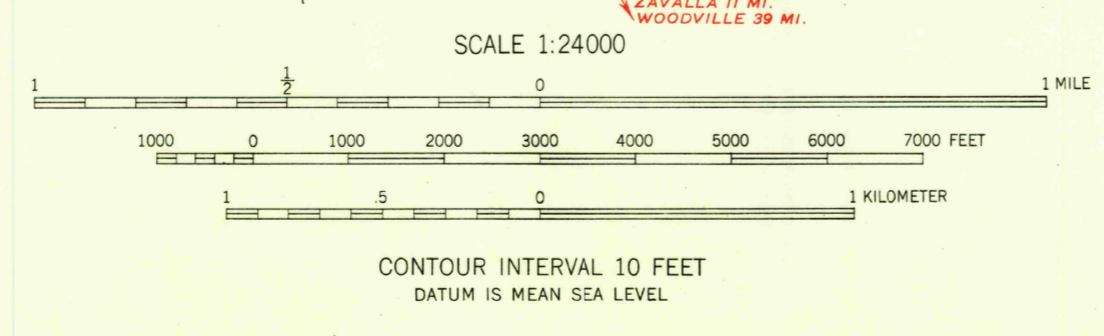
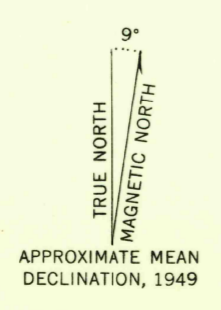


(RED-AND)

U. S. G. S.
FILE COPY
Inspection and Editing.



Mapped, edited, and published by the Geological Survey
Control by USGS and USC&GS
Culture and drainage in part compiled from
aerial photographs taken 1946-1947
Topography by plane-table methods 1948-1949
Polyconic projection. 1927 North American datum
10,000-foot grid based on Texas coordinate system,
central zone



SCALE 1:24000
CONTOUR INTERVAL 10 FEET
DATUM IS MEAN SEA LEVEL

THIS MAP COMPLIES WITH NATIONAL MAP ACCURACY STANDARDS
FOR SALE BY U. S. GEOLOGICAL SURVEY, DENVER, COLORADO OR WASHINGTON 25, D. C.

USGS
Historical File
Topographic Division

U. S. G. S.
FILE COPY
Inspection and Editing.

ROAD CLASSIFICATION

HARD-SURFACE ALL WEATHER ROADS	DRY WEATHER ROADS
Heavy-duty — 4 LANE LANE	Improved dirt —
Medium-duty — 4 LANE LANE	Unimproved dirt —
Loose-surface, graded, or narrow hard-surface	
U. S. Route	State Route

HUNTINGTON, TEX.
N3115-W9430/7.5
EDITION OF 1950

MAR 27 1950 2150