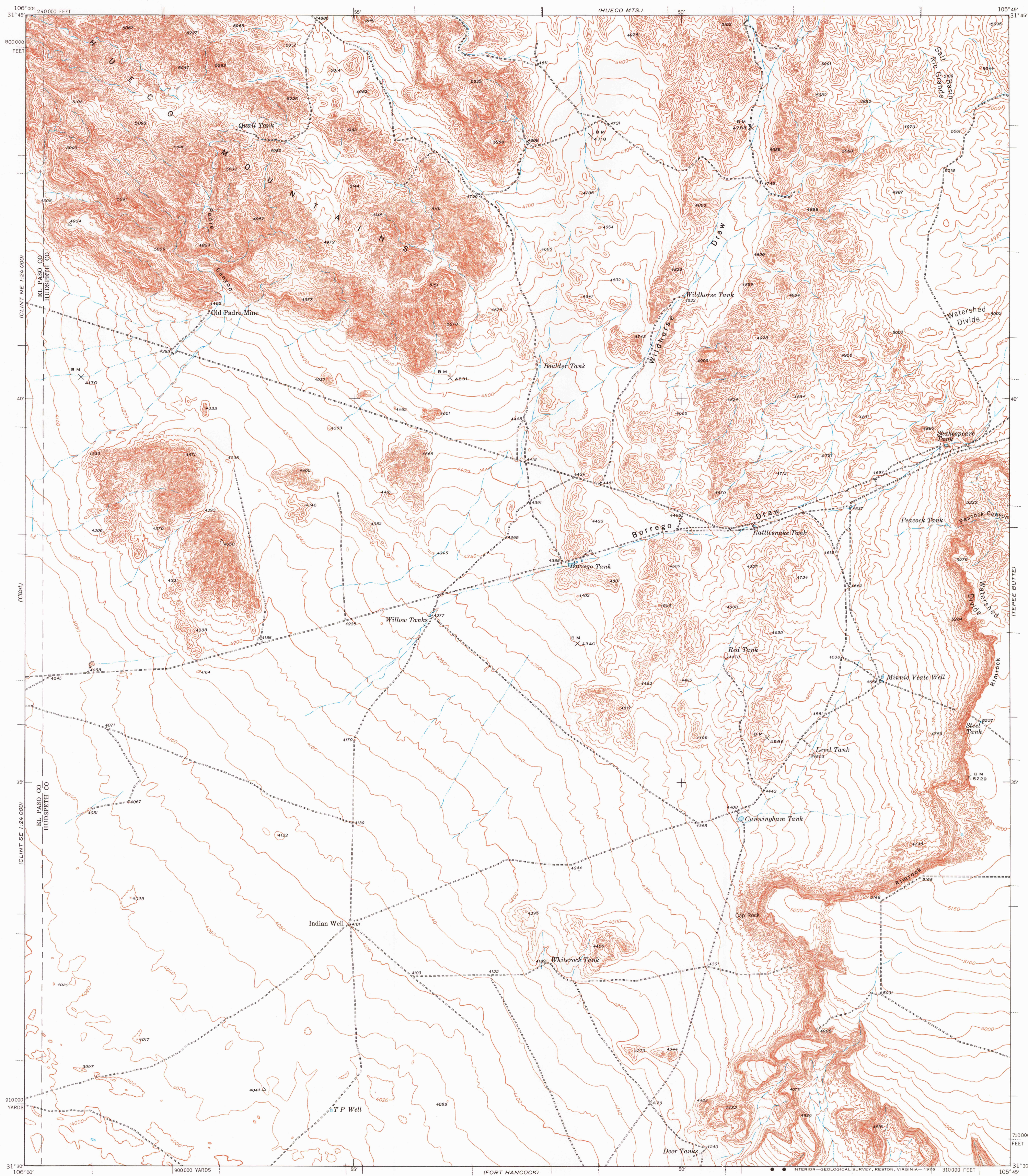


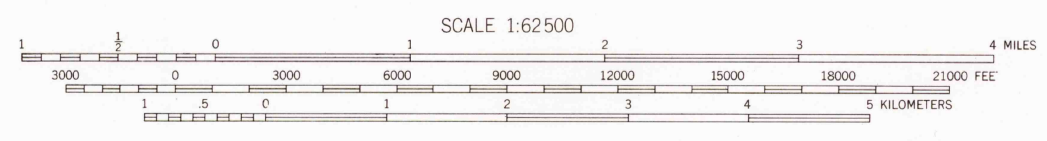
RELINS WEST WELL

(SAN ANTONIO MTN)



Topography by C. C. Holder, G. M. Perham, and F. W. Thorstenson. Surveyed in 1940.

12 1/2° E
TRUE NORTH
MAGNETIC NORTH
APPROXIMATE MEAN DECLINATION, 1940



CONTOUR INTERVAL 50 FEET
NATIONAL GEODETIC VERTICAL DATUM OF 1929

Polyconic projection. 1927 North American datum. 5000 yard grid based on U. S. zone system, E. 10000 foot grid based on Texas (Central) rectangular coordinate system.

BORREGO, TEX.
Edition of 1942
reprinted 1949
N3130-W10545/15

(TORVILLO)

(FINDLEY MTS.)