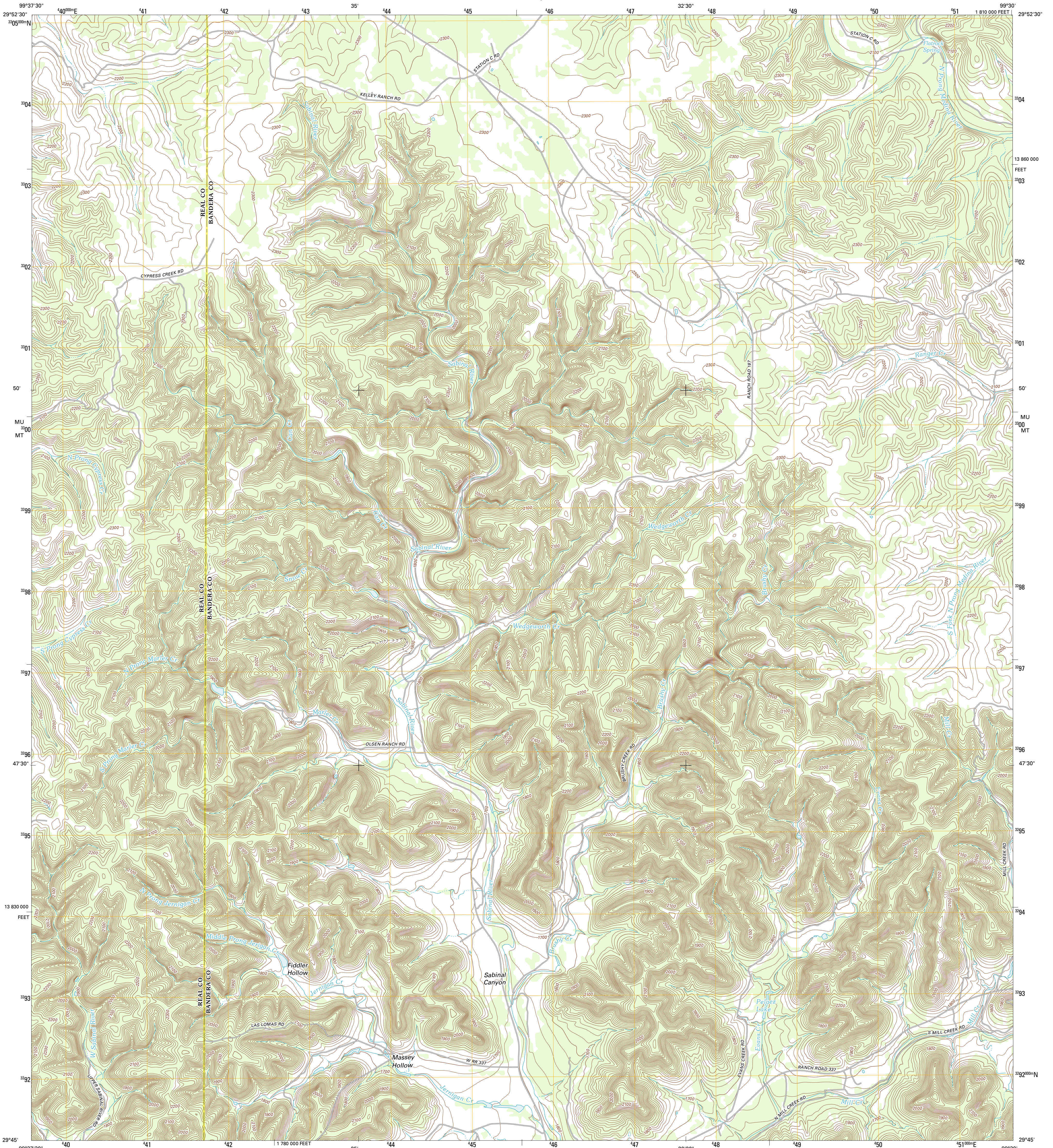




U.S. DEPARTMENT OF THE INTERIOR  
U. S. GEOLOGICAL SURVEY

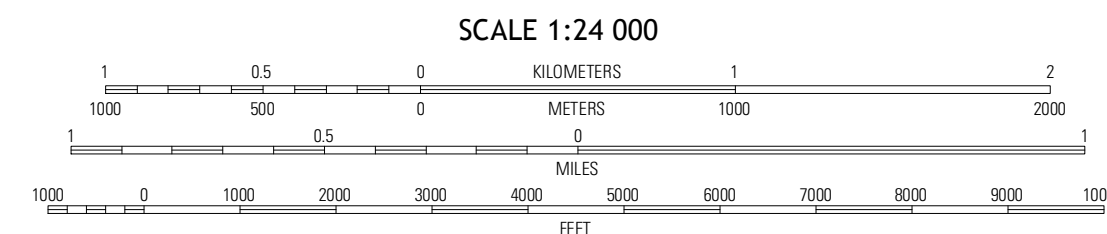
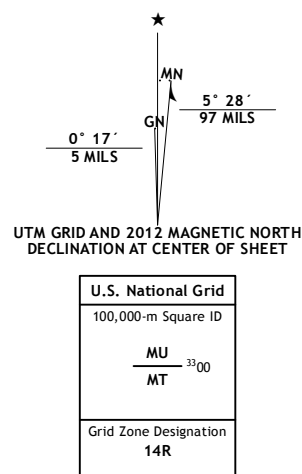


SABINAL CANYON QUADRANGLE  
TEXAS  
7.5-MINUTE SERIES



Produced by the United States Geological Survey  
North American Datum of 1983 (NAD83)  
World Geodetic System of 1984 (WGS84), Projection and  
1 000-meter grid: Universal Transverse Mercator, Zone 14R  
10 000-foot ticks: Texas Coordinate System of 1983 (south  
central zone)

Imagery.....NAIP, May 2010  
Roads.....C2006-2012 TomTom  
Names.....GNS, 2012  
Hydrography.....National Hydrography Dataset, 2010  
Contours.....National Elevation Dataset, 2003  
Boundaries.....Census, IBWC, IBC, USGS, 1972 - 2012



CONTOUR INTERVAL 20 FEET  
NORTH AMERICAN VERTICAL DATUM OF 1988  
This map was produced to conform with the  
National Geospatial Program US Topo Product Standard, 2011.  
A metadata file associated with this product is draft version 0.6.7



QUADRANGLE LOCATION

|                 |                |                 |
|-----------------|----------------|-----------------|
| Hillcrest Ranch | Well Hollow    | Diamond S Ranch |
| Creek Bluff     | Sabinal Canyon | Love Creek      |
| Rio Pito        | Vanderpool     | Seco Pass       |

ROAD CLASSIFICATION

|                  |             |
|------------------|-------------|
| Interstate Route | State Route |
| US Route         | Local Road  |
| Ramp             | 4WD         |
|                  |             |
|                  |             |

SABINAL CANYON, TX  
2012

ADJOINING 7.5 QUADRANGLES