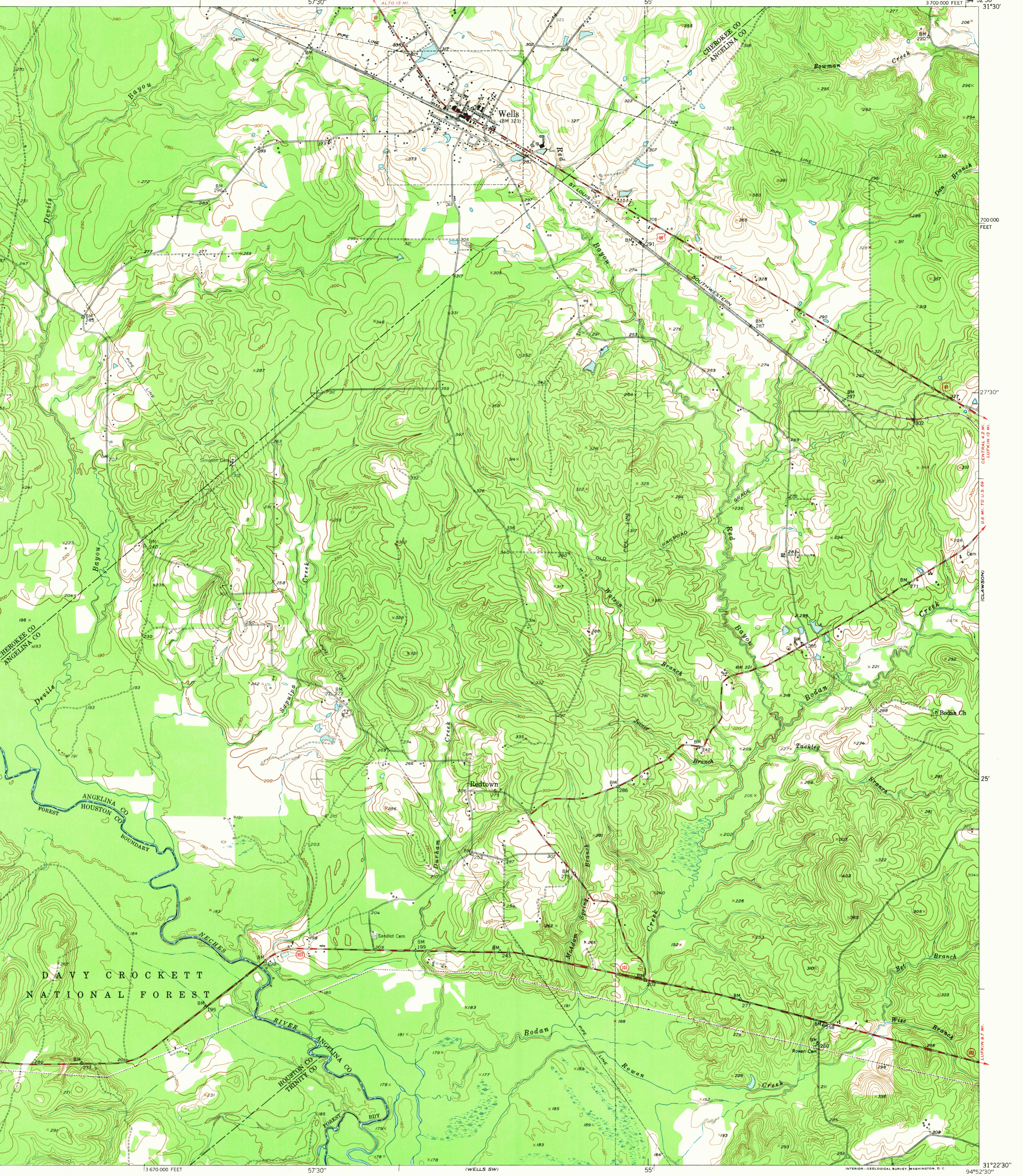
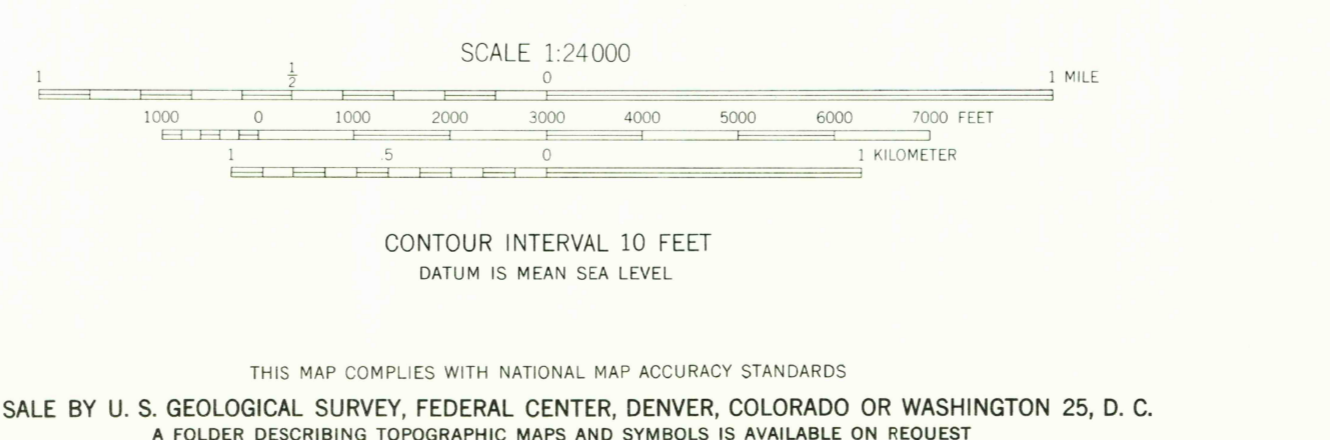


95°00'
31°30'
27°30'
25'
670 000 FEET
31°22'30"



3700 000 FEET
200 000 FEET
27°30'
25'
31°22'30"

Mapped, edited, and published by the Geological Survey
Control by USGS and USC&GS
Culture and drainage in part compiled from
aerial photographs taken 1946
Topography by plane-table methods 1949
Polyconic projection. 1927 North American datum
10,000-foot grid based on Texas coordinate system,
central zone



ROAD CLASSIFICATION
HARD SURFACE ALL WEATHER ROADS DRY WEATHER ROADS
Heavy-duty ——— **LANE LANE** Improved dirt
Medium-duty ——— **LANE LANE** Unimproved dirt
Loose surface, graded, or narrow hard-surface
U. S. Route State Route

USGS
HISTORICAL FILE
TOPOGRAPHIC DIVISION

WELLS, TEX.
N3122.5-W9452.5/7.5
EDITION OF 1951

1200