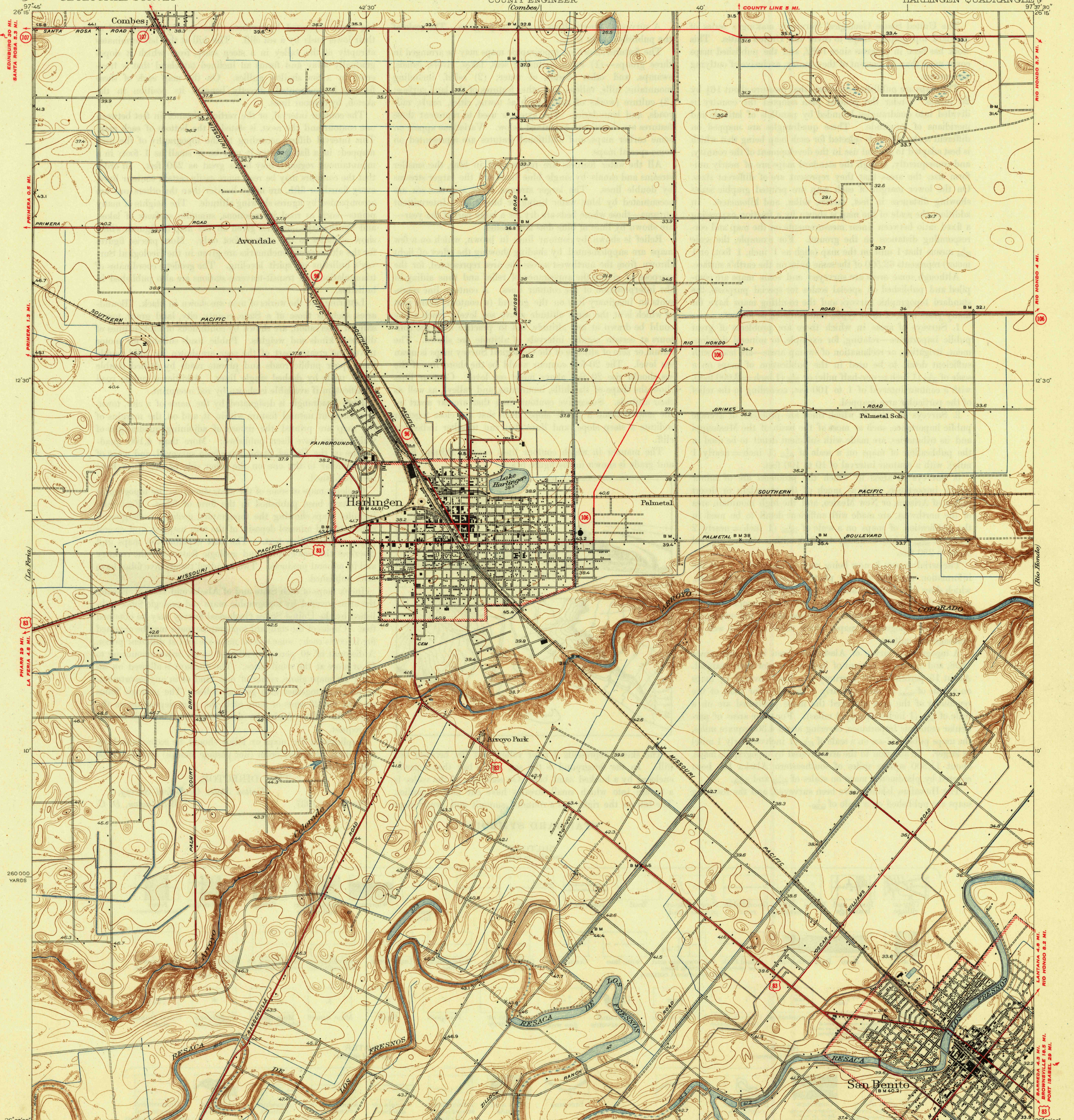


U. S. G. S.  
FILE COPY  
Inspection and Editing.

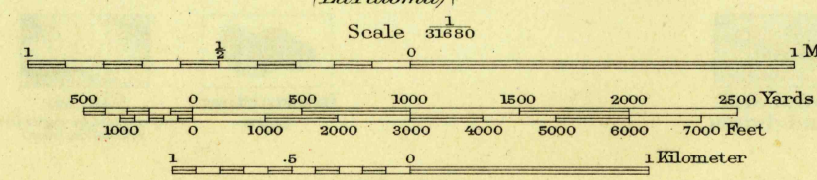
KINGSVILLE 89 MI.  
RAYMONDVILLE 17 MI.  
SEBASTIAN 7 MI.  
UNITED STATES  
DEPARTMENT OF THE INTERIOR  
GEOLOGICAL SURVEY

CAMERON COUNTY, TEXAS  
REPRESENTED BY THE  
COUNTY ENGINEER  
(Combes)

TEXAS  
(CAMERON COUNTY)  
HARLINGEN QUADRANGLE



Topography by R.H.Reineck and J.B.Leachman  
Culture and drainage in part compiled from aerial photographs  
Surveyed in 1929  
RANGERVILLE 2.7 MI.  
JUNC. U. S. NO. 281 5.4 MI.



USGS  
Historical File  
Topographic Division  
Polyconic projection, North American datum  
5000 yard grid based upon U.S. zone system, D  
Irrigation canals are not contoured  
LANDRUM (JUNC. U. S. NO. 281) 7 MI.  
LA PALOMA 7 MI.  
ROUTES USUALLY TRAVELED  
HARD IMPERVIOUS SURFACES  
OTHER SURFACE IMPROVEMENTS  
U. S. ROUTE 1944 STATE ROUTE

HARLINGEN, TEX.  
Edition of 1932  
reprinted 1945  
N26075-W93735/7.5

U. S. G. S.  
FILE COPY  
Inspection and Editing.

4115  
MAY 1 1945