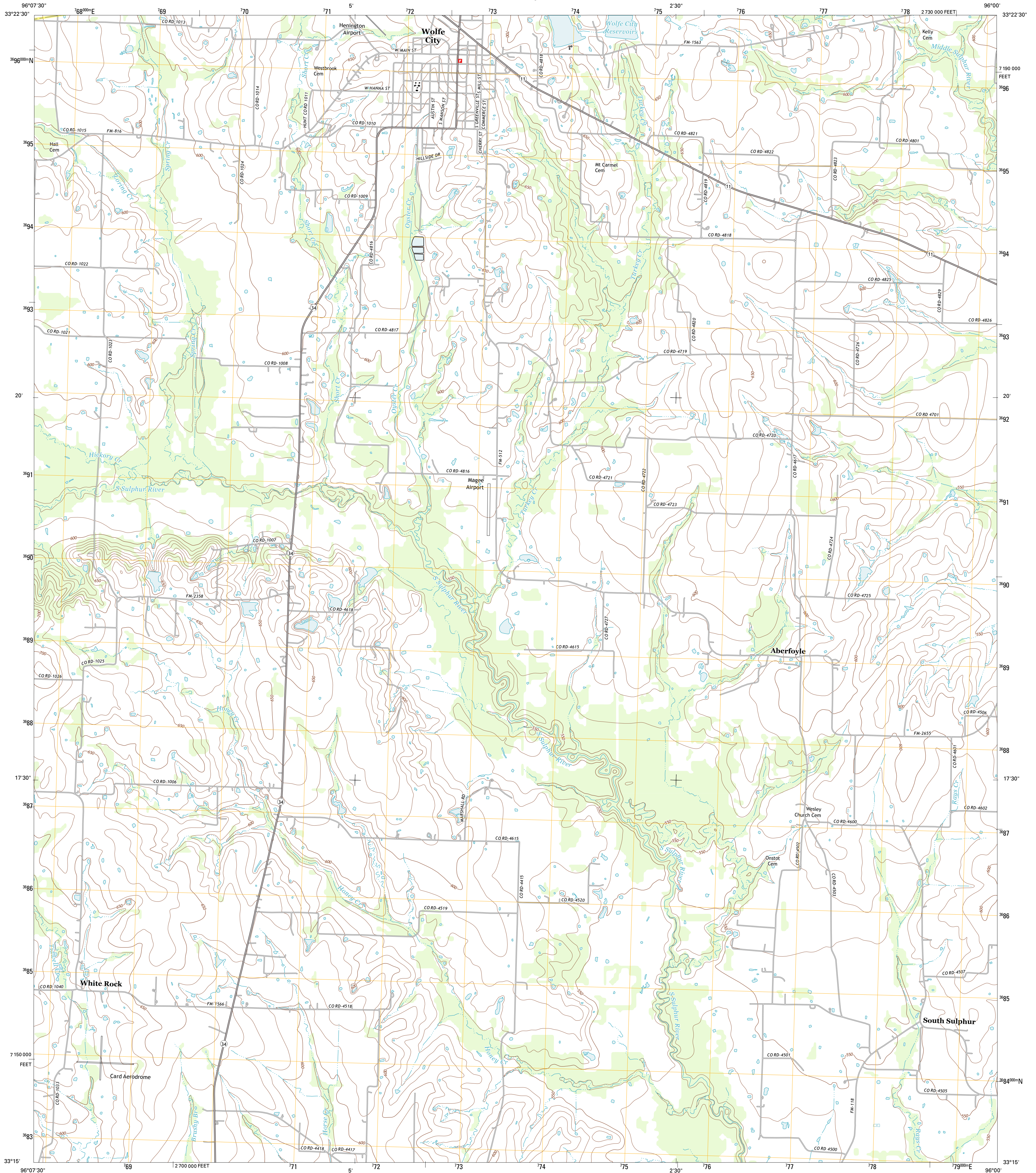




U.S. DEPARTMENT OF THE INTERIOR
U. S. GEOLOGICAL SURVEY

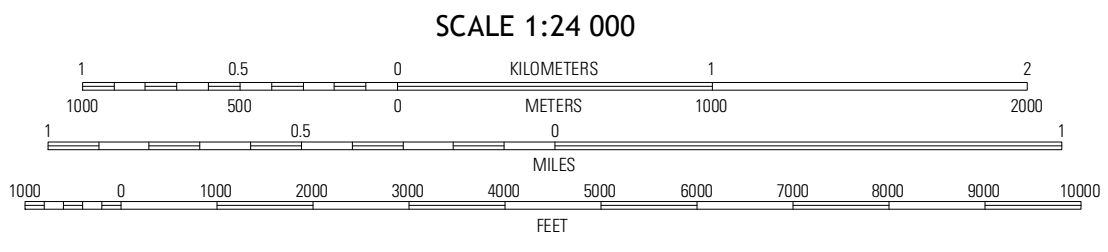
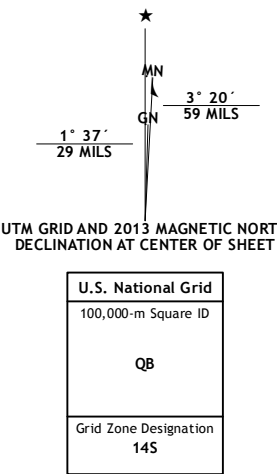


WOLFE CITY QUADRANGLE
TEXAS
7.5-MINUTE SERIES



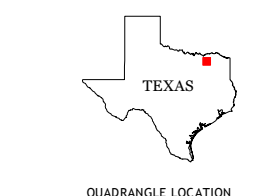
Produced by the United States Geological Survey
North American Datum of 1983 (NAD83)
World Geodetic System of 1984 (WGS84). Projection and
1 000-meter grid: Universal Transverse Mercator, Zone 14S
10 000-foot ticks: Texas Coordinate System of 1983 (north
central zone)

Imagery.....NAIP, August 2010
Roads.....C2006-2012 TomTom
Names.....GNIS, 2012
Hydrography.....National Hydrography Dataset, 2010
Contours.....National Elevation Dataset, 2004
Boundaries.....Census, IBWC, USGS, 1972 - 2012



CONTOUR INTERVAL 10 FEET
NORTH AMERICAN VERTICAL DATUM OF 1988

This map was produced to conform with the
National Geospatial Program US Topo Product Standard, 2011.
A metadata file associated with this product is draft version 0.6.7



ROAD CLASSIFICATION

- Interstate Route
- US Route
- Ramp
- State Route
- Local Road
- 4WD

QUADRANGLE LOCATION

| | | |
|---------------|---------------|----------------|
| Leonard | Gibber | Ladonia |
| Odelite | Wolfe City | Commerce North |
| Greenville NW | Greenville NE | Commerce South |

ADJOINING 7.5 QUADRANGLES

WOLFE CITY, TX
2013