

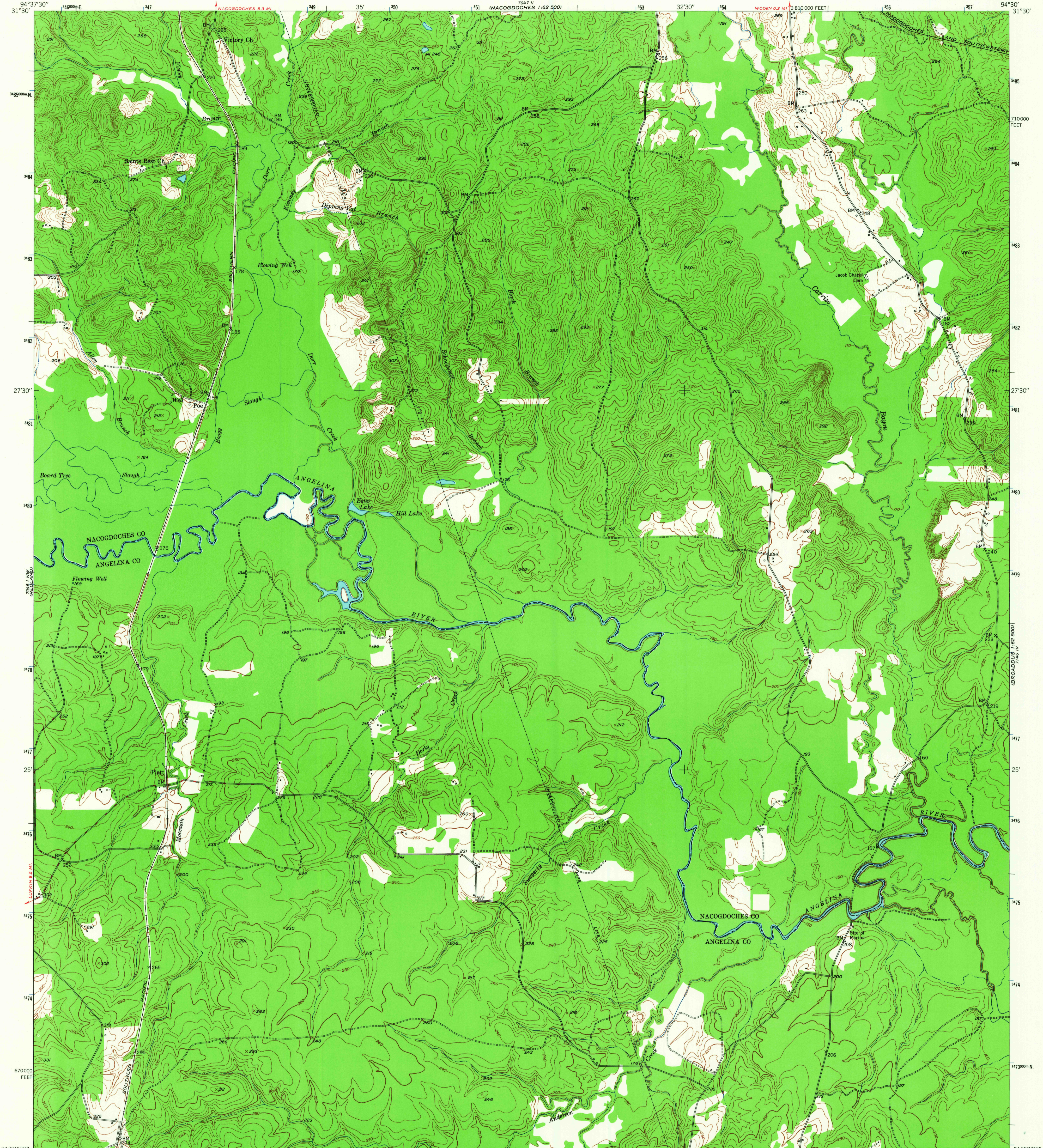
7.5 MINUTE SERIES (TOPOGRAPHIC)
NACOGDOCHES 1:62,500

UNITED STATES
DEPARTMENT OF THE INTERIOR
GEOLOGICAL SURVEY

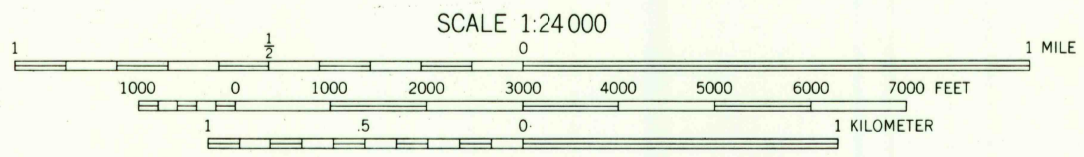
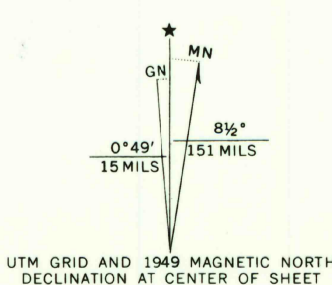
UNITED STATES
DEPARTMENT OF THE ARMY
CORPS OF ENGINEERS

PLATT QUADRANGLE
TEXAS
7.5 MINUTE SERIES (TOPOGRAPHIC)

7.5 MINUTE SERIES (TOPOGRAPHIC)
MARTINVILLE 1:62,500



Maped, edited, and published by the Geological Survey
Control by USGS and USC&GS
Culture and drainage in part compiled from
aerial photographs taken 1947
Topography by plane-table methods 1948-1949
Polyconic projection. 1927 North American datum
10,000-foot grid based on Texas coordinate system,
central zone
1000-meter Universal Transverse Mercator grid ticks,
zone 15, shown in blue



CONTOUR INTERVAL 10 FEET
DATUM IS MEAN SEA LEVEL

ROAD CLASSIFICATION

HARD-SURFACE ALL WEATHER ROADS	DRY WEATHER ROADS
Heavy-duty 4-LANE ISLAND	Improved dirt
Medium-duty 4-LANE ISLAND	Unimproved dirt
Loose-surface, graded, or narrow hard-surface	
U. S. Route	State Route

THIS MAP COMPLIES WITH NATIONAL MAP ACCURACY STANDARDS
FOR SALE BY U. S. GEOLOGICAL SURVEY, DENVER, COLORADO 80225 OR WASHINGTON, D. C. 20242
A FOLDER DESCRIBING TOPOGRAPHIC MAPS AND SYMBOLS IS AVAILABLE ON REQUEST

U.S.G.S.
FILE COPY
TOPOGRAPHIC DIVISION

PLATT, TEX.
N3122.5-W9430/7.5
1949
AMS 7046 I NE-SERIES V882

1495