

421-N-IV-E-2-NW-4
TOPOGRAPHY

U. S. GEOLOGICAL SURVEY
TOPOGRAPHIC FILES

JUL 25 1922

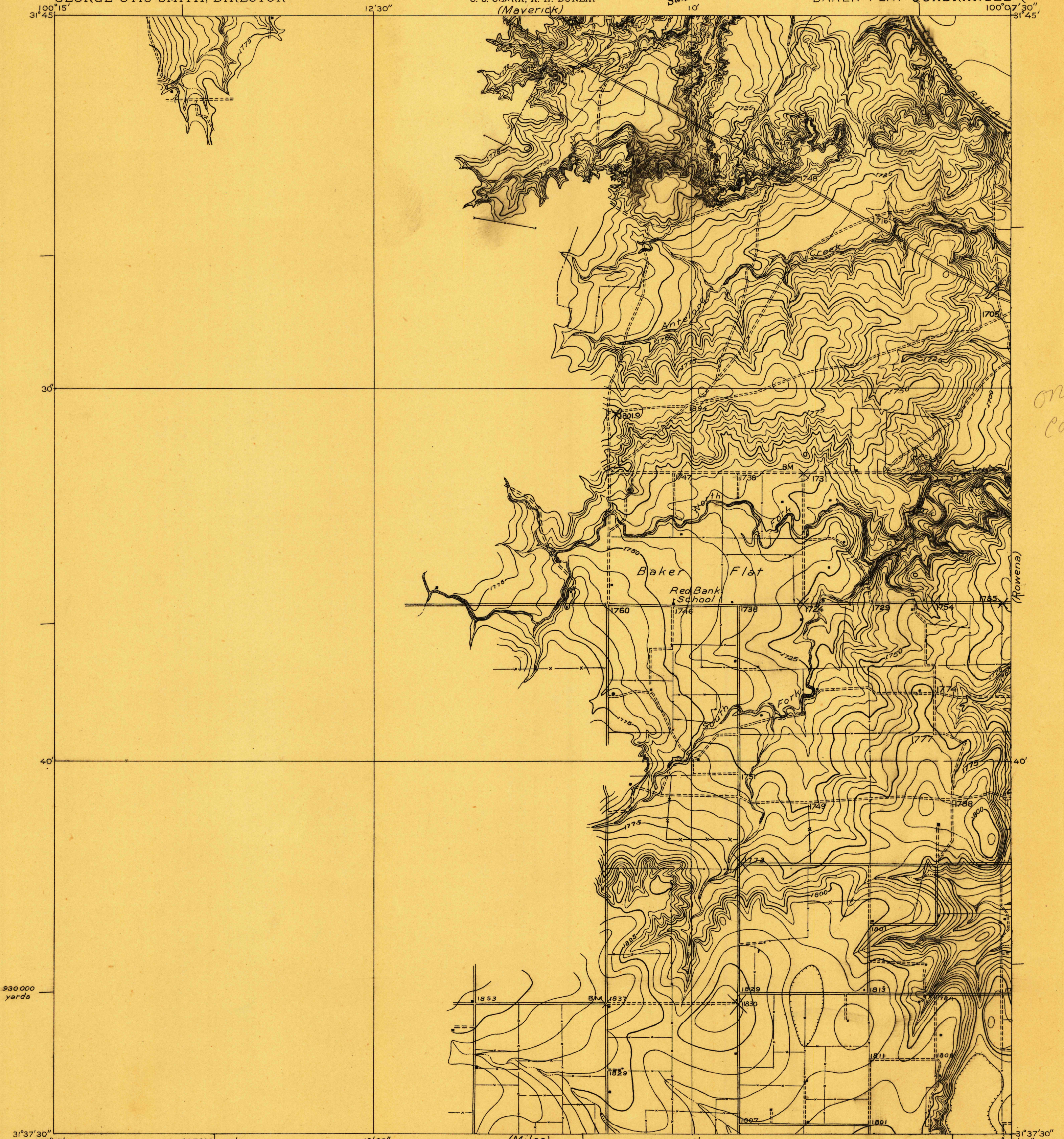
RETAINED COPY
This sheet must not be taken
from the files without an order
from the Chief Geographer.

DEPARTMENT OF THE INTERIOR
ALBERT B. FALL, SECRETARY
U. S. GEOLOGICAL SURVEY
GEORGE OTIS SMITH, DIRECTOR

STATE OF TEXAS
BOARD OF WATER ENGINEERS
JOHN A. NORRIS, CHAIRMAN
C. S. CLARK, A. H. DUNLAP
(Maverick)

Advance sheet.
Subject to correction.

TEXAS
(RUNNELS COUNTY)
BAKER FLAT QUADRANGLE (Quarry Creek)

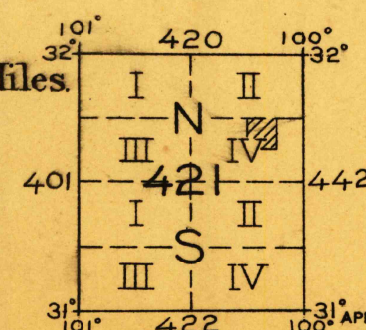


only copy.

665 000 yards
12'30"
10'
31°37'30"
100°15'
C. H. Birdseye, Chief Topographic Engineer.
T. G. Gerdine, Division Topographic Engineer.
Topography by C.C. Holder and T.F. Murphy.
Control by C.F. Urquhart, A. K. Andrews and C.E. Fulmer



Contour interval 5 feet.
Datum is mean sea level.



Polyconic projection. To place on North American datum move projection lines 80 feet north and 60 feet east.
5000 yard grid based upon U. S. zone system, D

USGS
Historical File
Topographic Division

SURVEYED IN COOPERATION WITH THE STATE OF TEXAS

APPROXIMATE MEAN DECLINATION 1921
BAKER FLAT, TEX.