

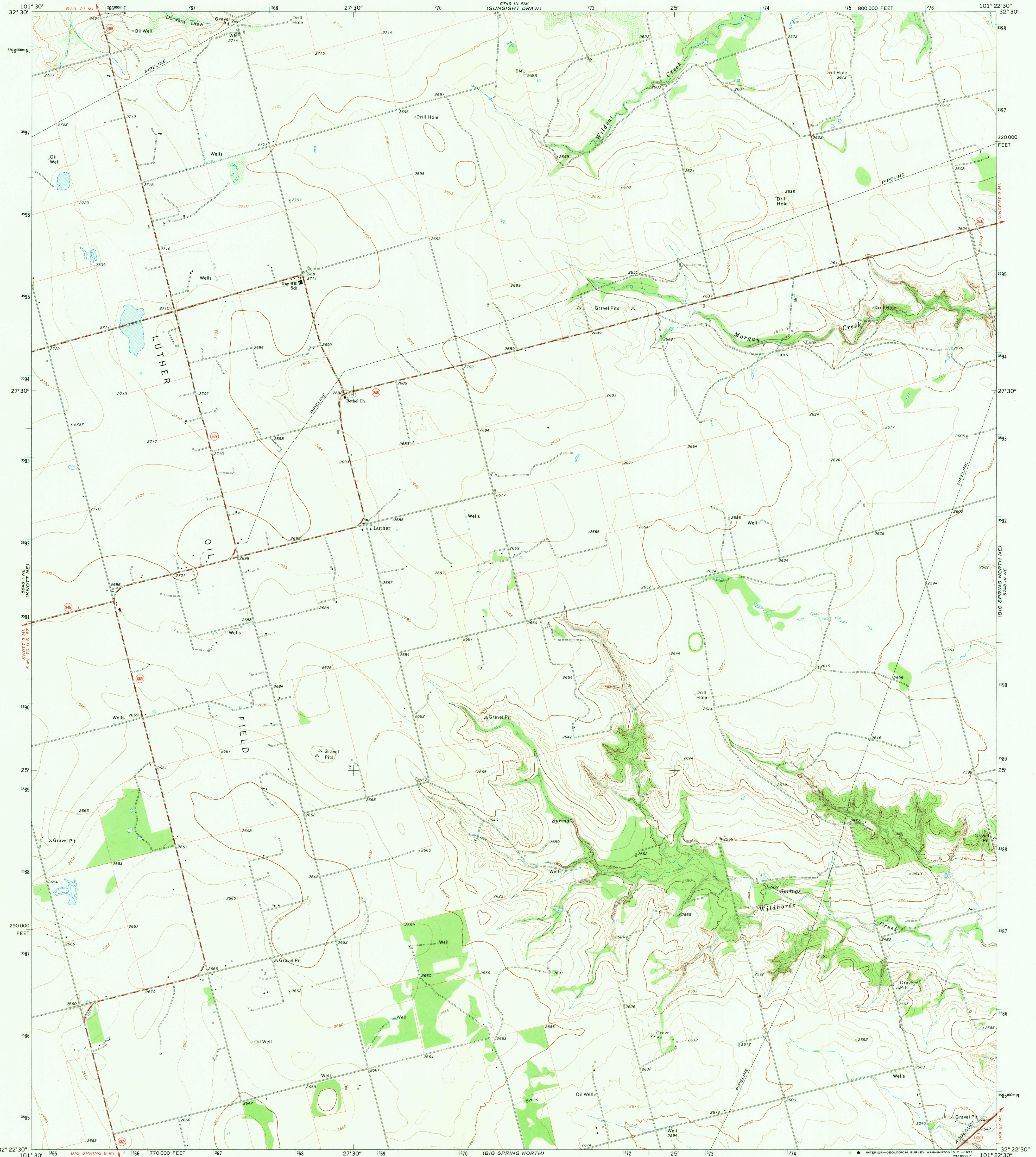
3549 80' (NEAL MODE)

UNITED STATES  
DEPARTMENT OF THE INTERIOR  
GEOLOGICAL SURVEY

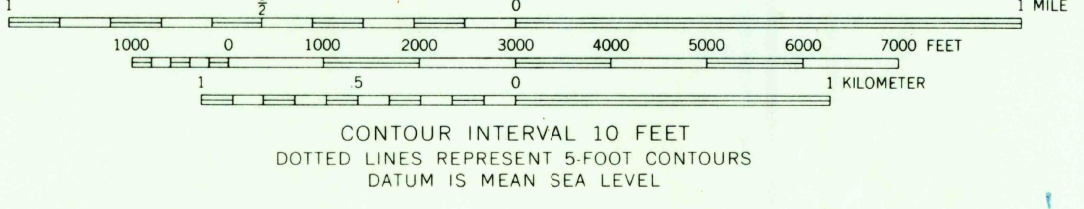
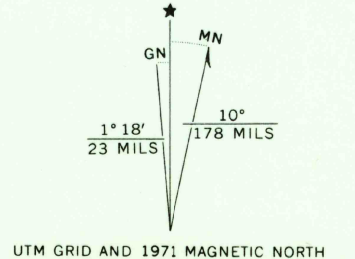
STATE OF TEXAS  
TEXAS WATER DEVELOPMENT BOARD

LUTHER QUADRANGLE  
TEXAS—HOWARD CO.  
7.5 MINUTE SERIES (TOPOGRAPHIC)  
NW/4 BIG SPRING NORTH 15' QUADRANGLE

3749 00' (GUNSIGHT DRAW 52)



Mapped, edited, and published by the Geological Survey  
Control by USGS and USC&GS  
Topography by photogrammetric methods from aerial photographs taken 1970. Field checked 1971  
Projection and 10,000-foot grid ticks: Texas coordinate system, north central zone (Lambert conformal conic)  
1000-meter Universal Transverse Mercator grid ticks, zone 14, shown in blue. 1927 North American datum  
Fine red dashed lines indicate selected fence lines



ROAD CLASSIFICATION

Primary highway, hard surface	Light-duty road, hard or improved surface
Secondary highway, hard surface	Unimproved road
Interstate Route	U.S. Route
	State Route

THIS MAP COMPLIES WITH NATIONAL MAP ACCURACY STANDARDS  
FOR SALE BY U.S. GEOLOGICAL SURVEY, DENVER, COLORADO 80225, OR WASHINGTON, D. C. 20242  
A FOLDER DESCRIBING TOPOGRAPHIC MAPS AND SYMBOLS IS AVAILABLE ON REQUEST

USGS  
Historical File  
Topographic Division

LUTHER, TEX.  
NW/4 BIG SPRING NORTH 15' QUADRANGLE  
N3222.5-W10122.5/7.5  
1971  
AMS 5748 IV NW—SERIES V882

3749 00' (HOWARD 52)

3549 80' (KNOTT 9E)

DEC 20 1973  
12/18  
2530