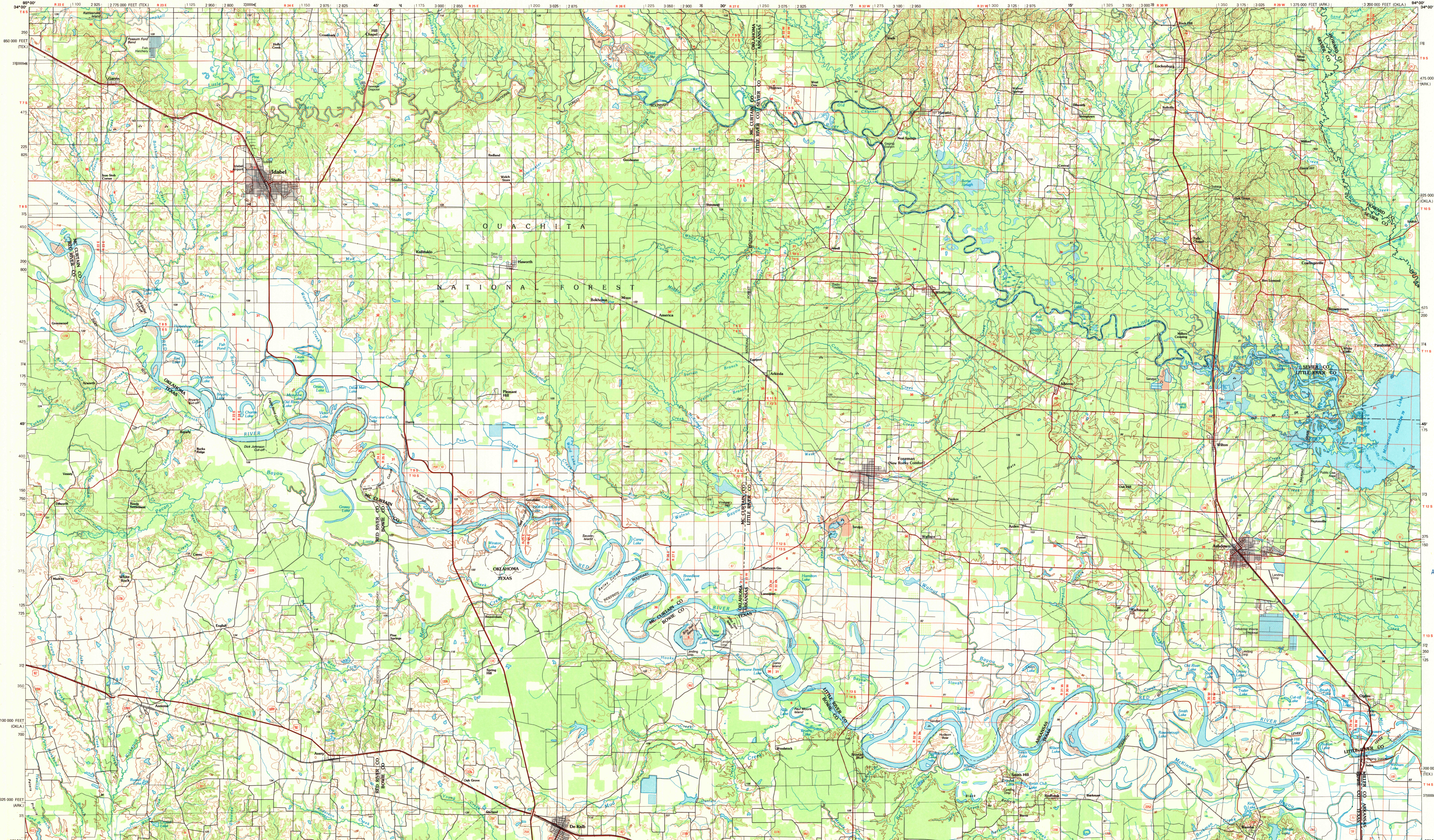
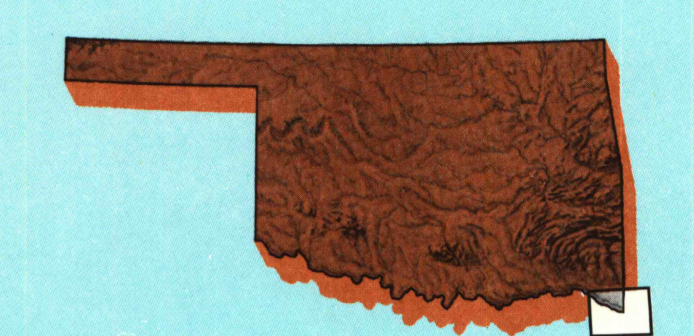


IDABEL, OKLAHOMA-ARKANSAS-TEXAS

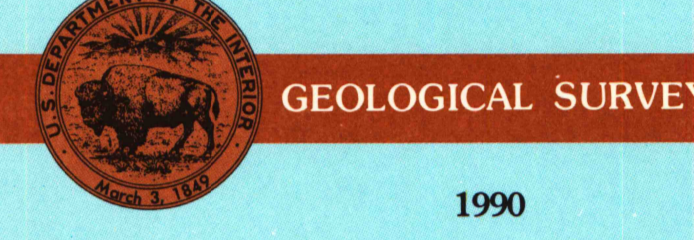
30 X 60 MINUTE SERIES (TOPOGRAPHIC)



**Idabel**  
OKLAHOMA-ARKANSAS-TEXAS  
1:100 000-scale metric  
topographic map



- 30 X 60 MINUTE QUADRANGLE SHOWING
- Contours and elevations in meters
  - Highways, roads and other manmade structures
  - Water features
  - Woodland areas
  - Geographic names



Produced by the United States Geological Survey  
 Compiled from USGS 1:250 000-scale topographic maps dated 1950-1978. Planimetry revised from aerial photographs taken 1987-88 and other source data. Revised information not field checked. Map edited 1990.  
 Projection and 10 000-meter grid, zone 15, Universal Transverse Mercator.  
 25 000-foot grid ticks based on Arkansas coordinate system, south zone. These coordinate system, north central zone and Oklahoma coordinate system, south zone 1927 North American Datum.  
 To place on the predicted North American Datum 1983, move the projection lines 8 meters south and 19 meters east. There may be private inholdings within the boundaries of the National or State reservations shown on this map.

CONTOUR INTERVAL, 10 METERS  
 SUPPLEMENTARY CONTOUR INTERVAL, 5 METERS  
 NATIONAL GEODETIC VERTICAL DATUM OF 1929  
 ELEVATIONS SHOWN TO THE NEAREST METER

THIS MAP COMPLIES WITH NATIONAL MAP ACCURACY STANDARDS

CONVERSION TABLE		DECLINATION DIAGRAM		ADJOINING MAPS	
Meters	Feet	1	2	3	4
1	3.2808	1	2	3	4
2	6.5617	5	6	7	8
3	9.8425				
4	13.1234				
5	16.4042				
6	19.6851				
7	22.9659				
8	26.2468				
9	29.5276				
10	32.8085				

To convert meters to feet multiply by 3.2808  
 To convert feet to meters multiply by 0.3048

UTM grid convergence (GM) and 180 magnetic declination (MD) at center of map. Diagram is approximate.

1 Anders  
 2 De Queen  
 3 Ardmore  
 4 Paris  
 5 Hope  
 6 Subler Springs  
 7 Trackman  
 8 Magalia

FOR SALE BY U.S. GEOLOGICAL SURVEY  
 DENVER, COLORADO 80225, OR RESTON, VIRGINIA 22092

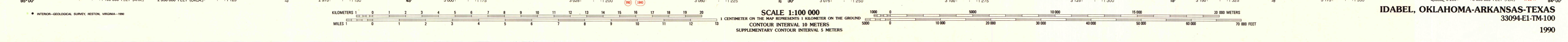
ARTHUR H. ROBINSON MAP LIBRARY U.S. Regional  
 University of Wisconsin-Madison Depository Copy  
 DO NOT DISCARD  
 R-4-91

**Topographic Map Symbols**

- Primary highway, hard surface
- Secondary highway, hard surface
- Light duty road, gravel street, hard or improved surface
- Other road or street, trail
- Route marker: interstate, U.S. State
- Railroad: standard gauge, narrow gauge
- Bridge: overpass, underpass
- Tunnel: road, railroad
- Built up area, locality, elevation
- Airport: landing field, landing strip
- National boundary
- State boundary
- County boundary
- National or State reservation boundary
- Land grant boundary
- U.S. public lands survey: range, township, section
- Range, township, section line: pre-railroad
- Power transmission line: pipeline
- Dam: dam with lock
- Cemetery: building
- Windmill; water well; spring
- Mine shaft; adit or cave; mine, quarry; gravel pit
- Campground; picnic area; U.S. location monument
- Ruins; cliff dwelling
- Dated surface: strip mine, lava, sand
- Contours: index, intermediate, supplementary
- Bathymetric contours: index, intermediate
- Stream, lake, perennial; intermittent
- Rapids, lake and small; lake, bog and small
- Area to be submerged; marsh, swam
- Land subject to controlled inundation; woodland
- Swamp; mangrove
- Order: viewer

A pamphlet describing topographic maps is available on request

3006-78.03  
SET



IDABEL, OKLAHOMA-ARKANSAS-TEXAS  
 33094-E1-TM-100  
 1990