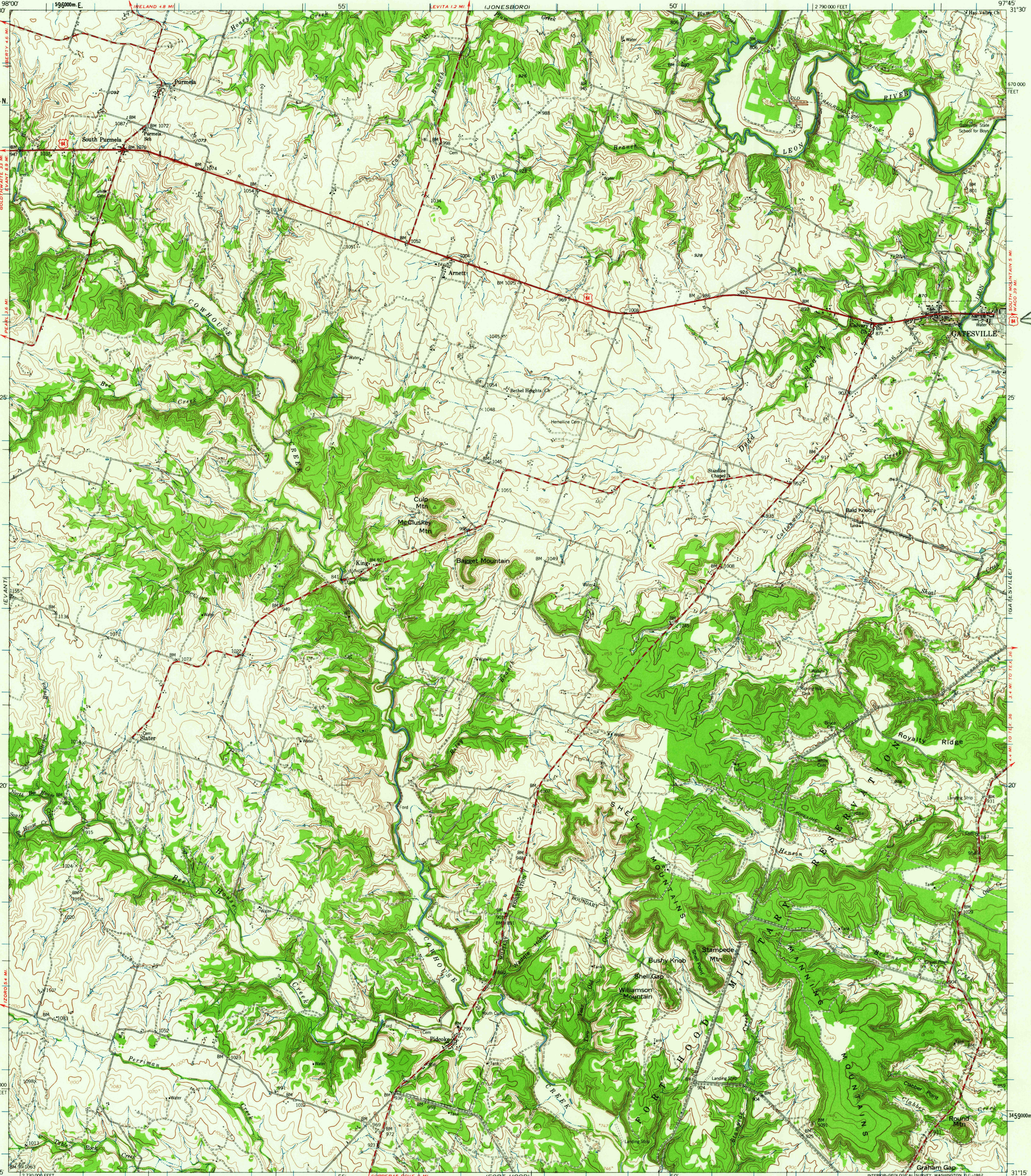


HAMILTON
GOLDTHWAITE 3.3 MI
EVANTY 4.6 MI
PEARL 1.6 MI
LEVANTI 1.6 MI
COPPERAS DOVE 4 MI
LAMPASAS

UNITED STATES
DEPARTMENT OF THE INTERIOR
GEOLOGICAL SURVEY

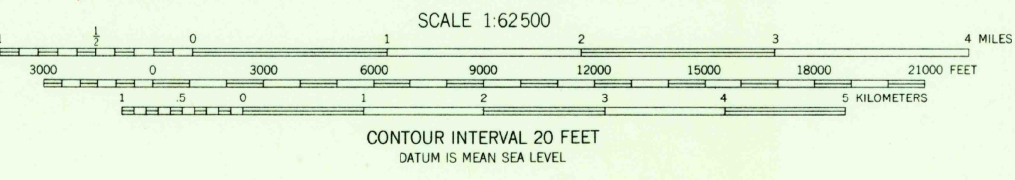
PURMELA QUADRANGLE
TEXAS-CORVELL CO
15 MINUTE SERIES (TOPOGRAPHIC)

MOSHEMI
31°30'
31°15'
31°00'
30°45'
30°30'
30°15'
30°00'
29°45'
29°30'
29°15'
29°00'
28°45'
28°30'
28°15'
28°00'
27°45'
27°30'
27°15'
27°00'
26°45'
26°30'
26°15'
26°00'
25°45'
25°30'
25°15'
25°00'
24°45'
24°30'
24°15'
24°00'
23°45'
23°30'
23°15'
23°00'
22°45'
22°30'
22°15'
22°00'
21°45'
21°30'
21°15'
21°00'
20°45'
20°30'
20°15'
20°00'
19°45'
19°30'
19°15'
19°00'
18°45'
18°30'
18°15'
18°00'
17°45'
17°30'
17°15'
17°00'
16°45'
16°30'
16°15'
16°00'
15°45'
15°30'
15°15'
15°00'
14°45'
14°30'
14°15'
14°00'
13°45'
13°30'
13°15'
13°00'
12°45'
12°30'
12°15'
12°00'
11°45'
11°30'
11°15'
11°00'
10°45'
10°30'
10°15'
10°00'
9°45'
9°30'
9°15'
9°00'
8°45'
8°30'
8°15'
8°00'
7°45'
7°30'
7°15'
7°00'
6°45'
6°30'
6°15'
6°00'
5°45'
5°30'
5°15'
5°00'
4°45'
4°30'
4°15'
4°00'
3°45'
3°30'
3°15'
3°00'
2°45'
2°30'
2°15'
2°00'
1°45'
1°30'
1°15'
1°00'
0°45'
0°30'
0°15'
0°00'



Mapped by the Army Map Service
Published for civil use by the Geological Survey
Control by USGS, USC&GS, and USCE
Compiled by the Army Map Service from Gatesville West, Purmela,
Pidcoke, and Shell Mountains 7.5 minute quadrangle maps,
surveyed 1947, revised 1957 and 1958
Topography from aerial photographs by photogrammetric methods
Aerial photographs taken 1947. Field check 1947. Planimetric
detail revised from aerial photographs taken 1955 and 1956
Field check 1957 and 1958
Polyconic projection. 1927 North American datum
10,000-foot grid based on Texas coordinate system,
central zone
1000-meter Universal Transverse Mercator grid ticks,
zone 14, shown in blue
Red tint indicates areas in which only landmark buildings are shown

APPROXIMATE MEAN
DECLINATION, 1958
TRUE NORTH
MAGNETIC NORTH



ROAD CLASSIFICATION
Heavy-duty ——— Light-duty ———
Medium-duty ——— Unimproved dirt ———
U.S. Route

FOR SALE BY U. S. GEOLOGICAL SURVEY, DENVER 25, COLORADO OR WASHINGTON 25, D. C.
A FOLDER DESCRIBING TOPOGRAPHIC MAPS AND SYMBOLS IS AVAILABLE ON REQUEST



U.S.G.S. FILE COPY TOPOGRAPHIC DIVISION
PURMELA, TEX.
N3115-W9745/15
1958
JUL 23 1962
2520