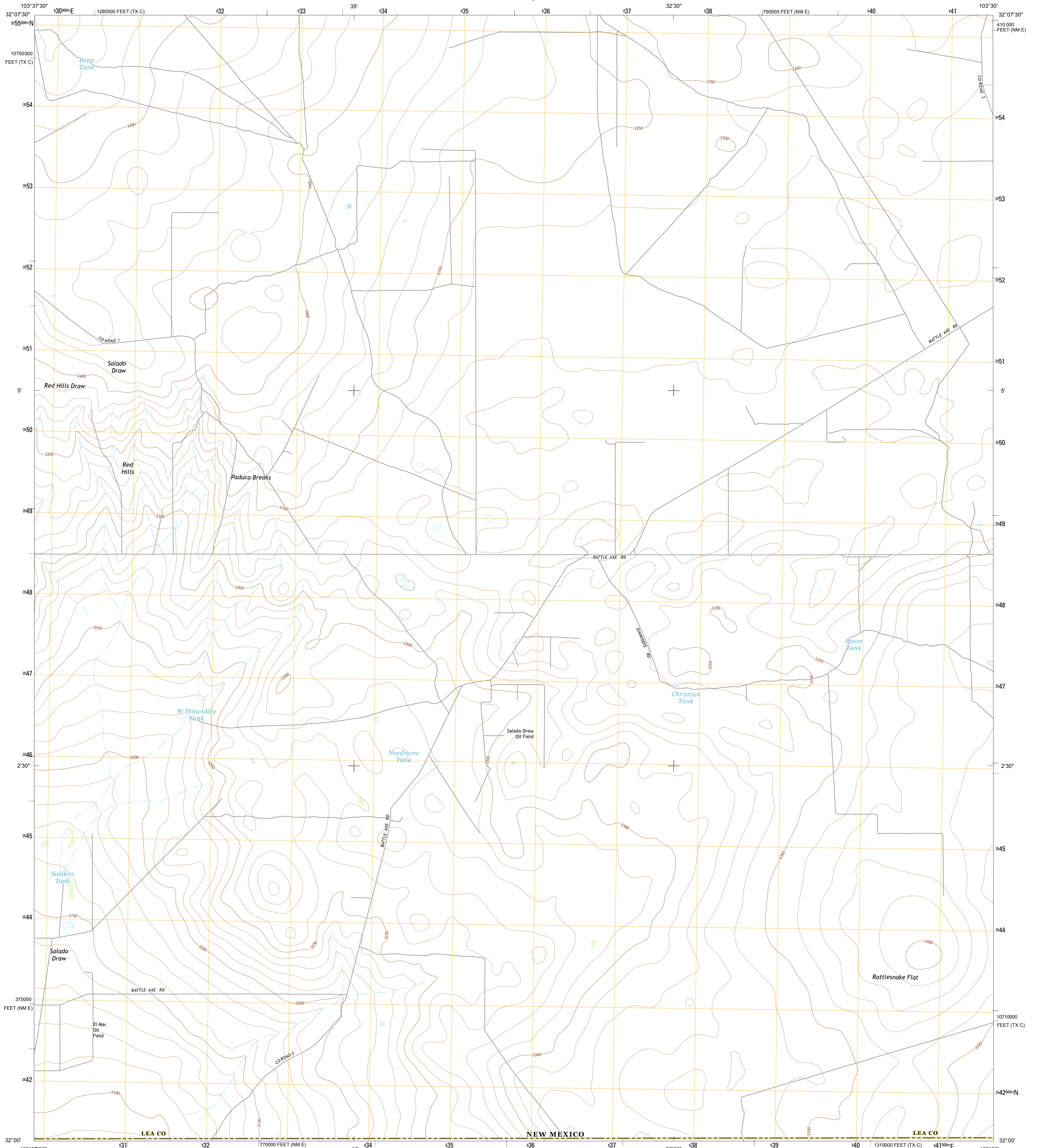




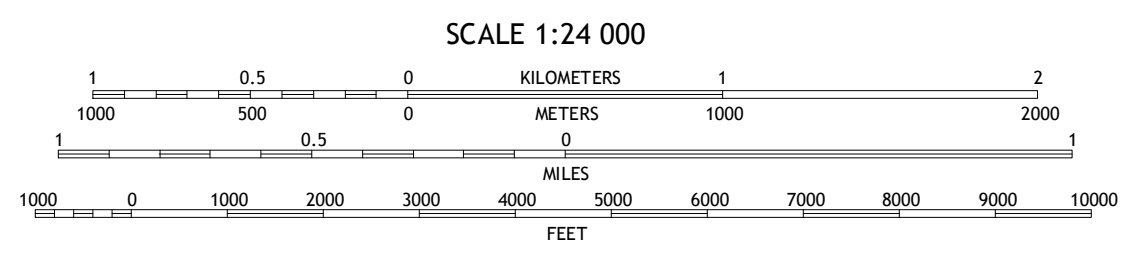
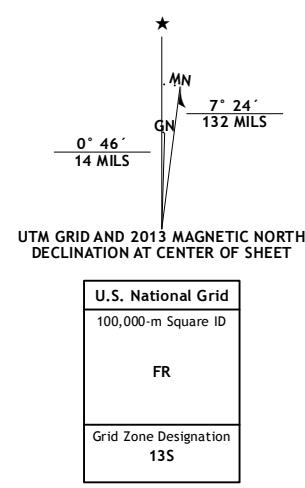
U.S. DEPARTMENT OF THE INTERIOR  
U. S. GEOLOGICAL SURVEY



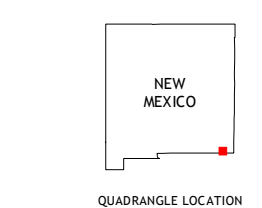
PADUCA BREAKS EAST QUADRANGLE  
NEW MEXICO-Texas  
7.5-MINUTE SERIES



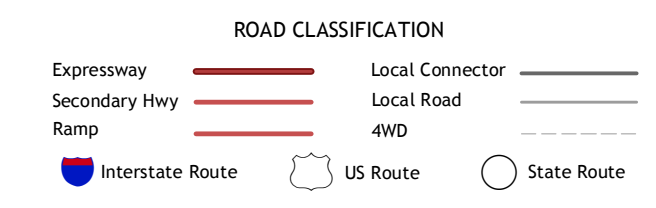
**Produced by the United States Geological Survey**  
 North American Datum of 1983 (NAD83)  
 World Geodetic System of 1984 (WGS84). Projection and  
 1 000-meter grid: Universal Transverse Mercator, Zone 13S  
 10 000-foot ticks: New Mexico Coordinate System of 1983 (east  
 zone), Texas Coordinate System of 1983 (central zone)  
 Imagery.....NAIP, May 2011  
 Roads.....©2006-2013 TomTom  
 Names.....©GNIS, 2013  
 Hydrography.....National Hydrography Dataset, 2011  
 Contours.....National Elevation Dataset, 2002  
 Boundaries.....Census, IBWC, IBC, USGS, 1972- 2012  
 Public Land Survey System.....BLM, 2011



CONTOUR INTERVAL 10 FEET  
NORTH AMERICAN VERTICAL DATUM OF 1988  
 This map was produced to conform with the  
 National Geospatial Program US Topo Product Standard, 2011.  
 A metadata file associated with this product is draft version 0.6.15



Paduca Breaks NW	Bell Lake	Woodley Flat
Paduca Breaks West	Paduca Breaks East	Andrews Place
Kyle Ranch	Rudd Draw NE	Brunson Ranch



**PADUCA BREAKS EAST, NM-TX**  
2013

ADJOINING 7.5 QUADRANGLES