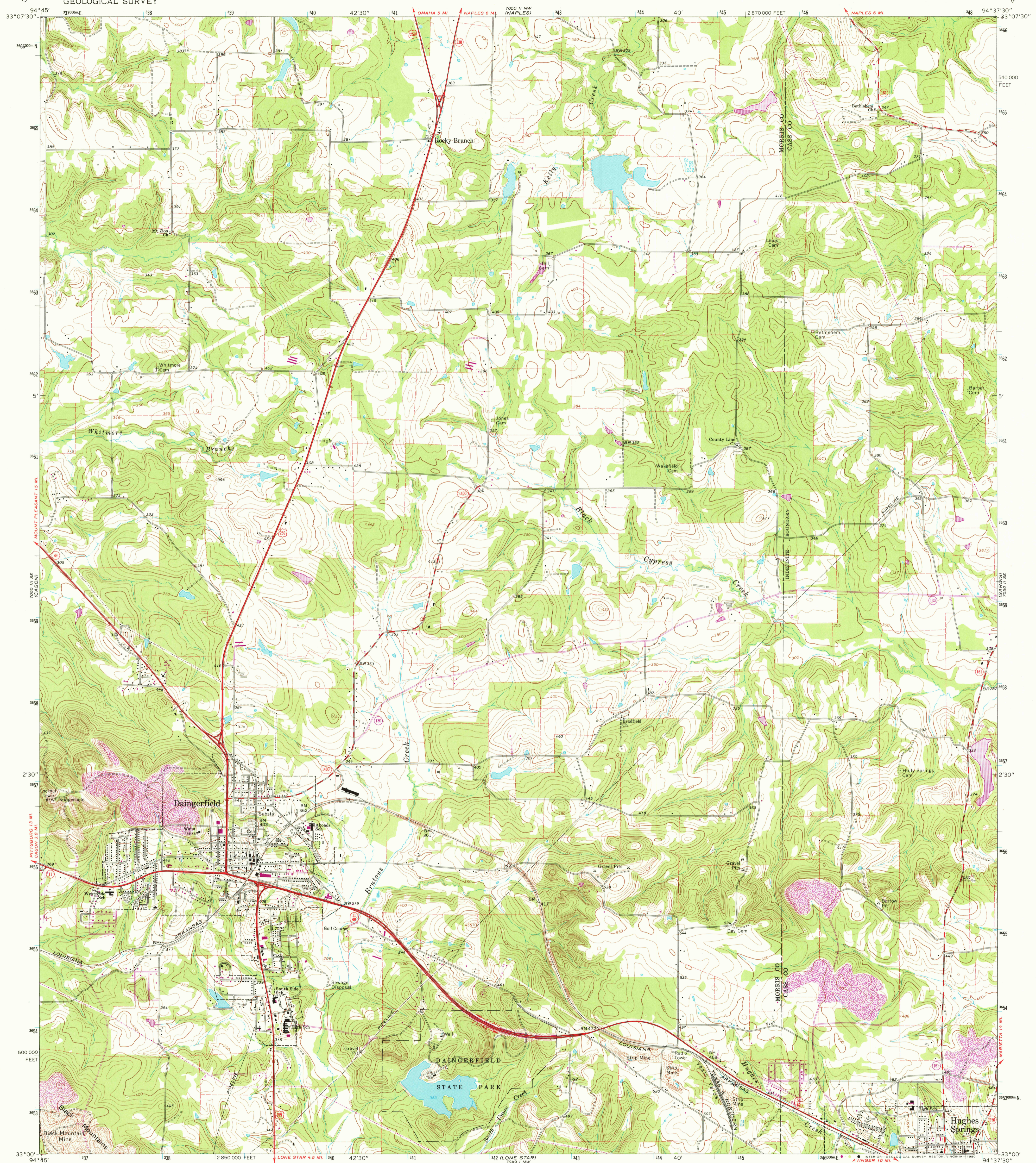


2000 FT. NE  
COOKVILLE

DAINGERFIELD QUADRANGLE  
TEXAS  
7.5 MINUTE SERIES (TOPOGRAPHIC)

2000 FT. NE  
MARBLE TA

UNITED STATES  
DEPARTMENT OF THE INTERIOR  
GEOLOGICAL SURVEY



Mapped, edited, and published by the Geological Survey  
Control by USGS and USC&GS  
Topography by photogrammetric methods from aerial  
photographs taken 1964. Field checked 1964  
Polyconic projection  
10,000-foot grid based on Texas coordinate system,  
north central zone  
1000-meter Universal Transverse Mercator grid ticks,  
zone 15, shown in blue. 1927 North American Datum  
To place on the predicted North American Datum 1983  
move the projection lines 10 meters south and  
20 meters east as shown by dashed corner ticks  
Fine red dashed lines indicate selected fence lines  
There may be private inholdings within the boundaries of  
the National or State reservations shown on this map

Revisions shown in purple and woodland compiled from  
aerial photographs taken 1976 and other source data  
This information not field checked. Map edited 1980

SCALE 1:24,000  
1 MILE  
1000 0 1000 2000 3000 4000 5000 6000 7000 FEET  
1 0 1 KILOMETER  
CONTOUR INTERVAL 10 FEET  
NATIONAL GEODETIC VERTICAL DATUM OF 1929  
THIS MAP COMPLIES WITH NATIONAL MAP ACCURACY STANDARDS  
FOR SALE BY U. S. GEOLOGICAL SURVEY, DENVER, COLORADO 80225, OR RESTON, VIRGINIA 22092  
A FOLDER DESCRIBING TOPOGRAPHIC MAPS AND SYMBOLS IS AVAILABLE ON REQUEST

ROAD CLASSIFICATION  
Heavy-duty ——— Light-duty ———  
Medium-duty ——— Unimproved dirt ———  
U.S. Route      State Route  
USCS  
Historical File  
Topographic Division  
DAINGERFIELD, TEX.  
N 3300—W 9437.5/7.5  
1964  
PHOTOREVISED 1980  
DMA 7050 II SW—SERIES V882  
AUG 14 1980  
2360



U.S. PATENTED  
1969 7 A.C.

U.S. PATENTED  
1969 7 A.C.