

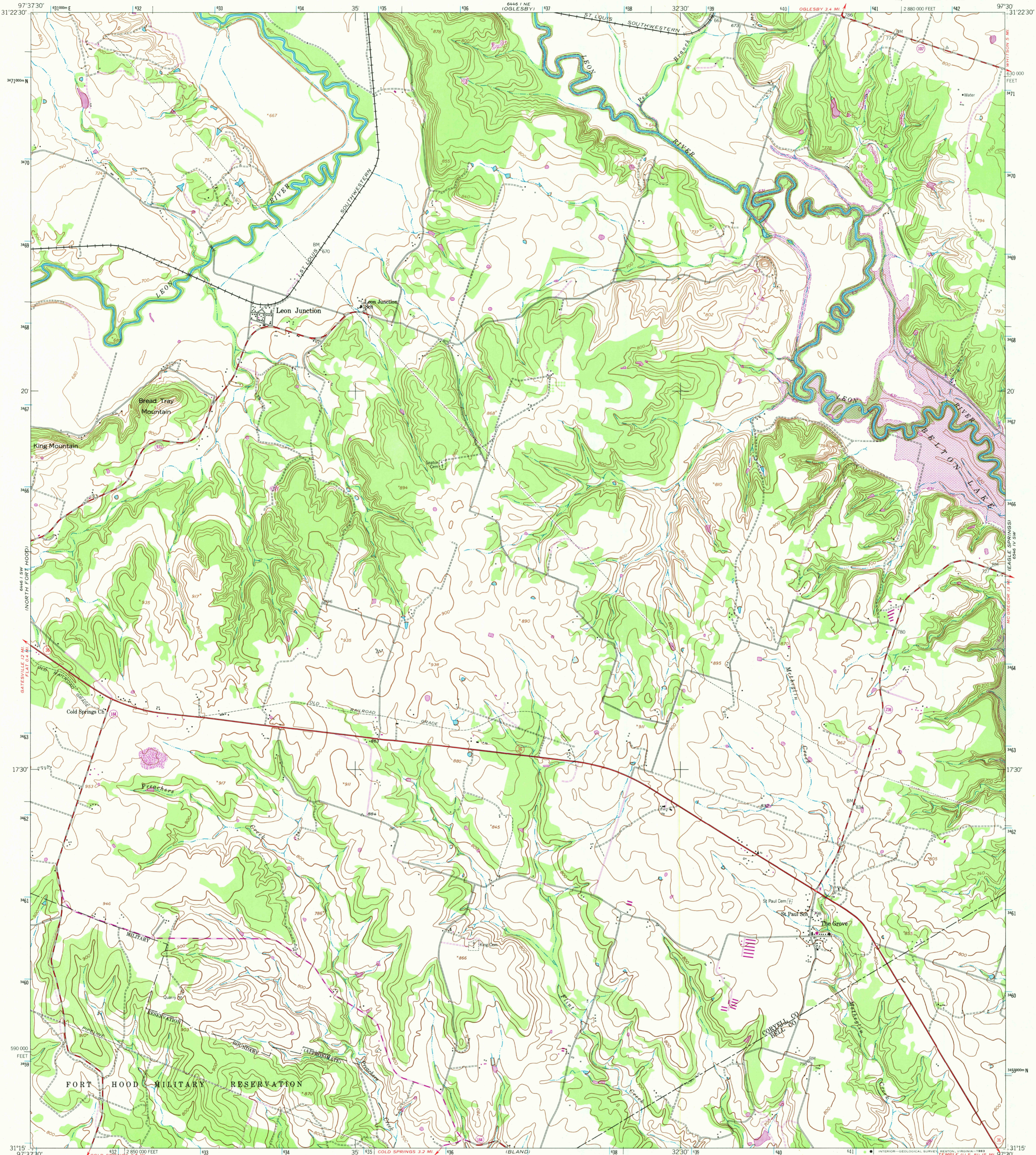
6446 I NW
GATESVILLE
EAST

UNITED STATES
DEPARTMENT OF THE INTERIOR
GEOLOGICAL SURVEY

UNITED STATES
DEPARTMENT OF THE ARMY
CORPS OF ENGINEERS
6446 I NE
(OGLESBY)

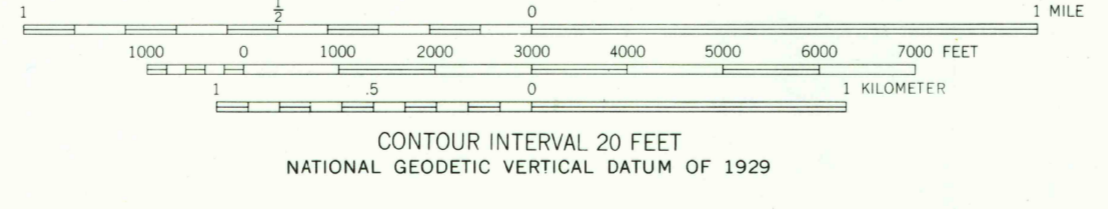
LEON JUNCTION QUADRANGLE
TEXAS
7.5 MINUTE SERIES (TOPOGRAPHIC)
SE 1/4 GATESVILLE 15' QUADRANGLE

6446 I NW
MC GREGORY



Mapped by the Army Map Service
Published for civil use by the Geological Survey
Control by USGS, NOS/NOAA and USCE
Topography from aerial photographs by photogrammetric methods
Aerial photographs taken 1947. Planimetric detail revised from
aerial photographs taken 1955-1956. Field check 1957
Polyconic projection. 1927 North American datum
10,000-foot grid based on Texas coordinate system,
central zone
1000-meter Universal Transverse Mercator grid ticks,
zone 14, shown in blue
Revisions shown in purple compiled by the Geological Survey from
aerial photographs taken 1976. Map edited 1978
This information not field checked

UTM GRID AND 1978 MAGNETIC NORTH
DECLINATION AT CENTER OF SHEET
75°
133 MILLS
0°45'
13 MILLS



THIS MAP COMPLIES WITH NATIONAL MAP ACCURACY STANDARDS
FOR SALE BY U.S. GEOLOGICAL SURVEY, DENVER, COLORADO 80225, OR RESTON, VIRGINIA 22092
A FOLDER DESCRIBING TOPOGRAPHIC MAPS AND SYMBOLS IS AVAILABLE ON REQUEST



QUADRANGLE LOCATION

3197-241

There may be private inholdings within the boundaries of
the National or State reservations shown on this map

ROAD CLASSIFICATION
Heavy-duty ——— Light-duty ———
Medium-duty ——— Unimproved dirt ———
○ State Route

LEON JUNCTION, TEX.
SE 1/4 GATESVILLE 15' QUADRANGLE
N3115-W9730/7.5
1957
PHOTO REVISIED 1978
DMA 6446 I SE-SERIES V882

JAN 28 1982

1700