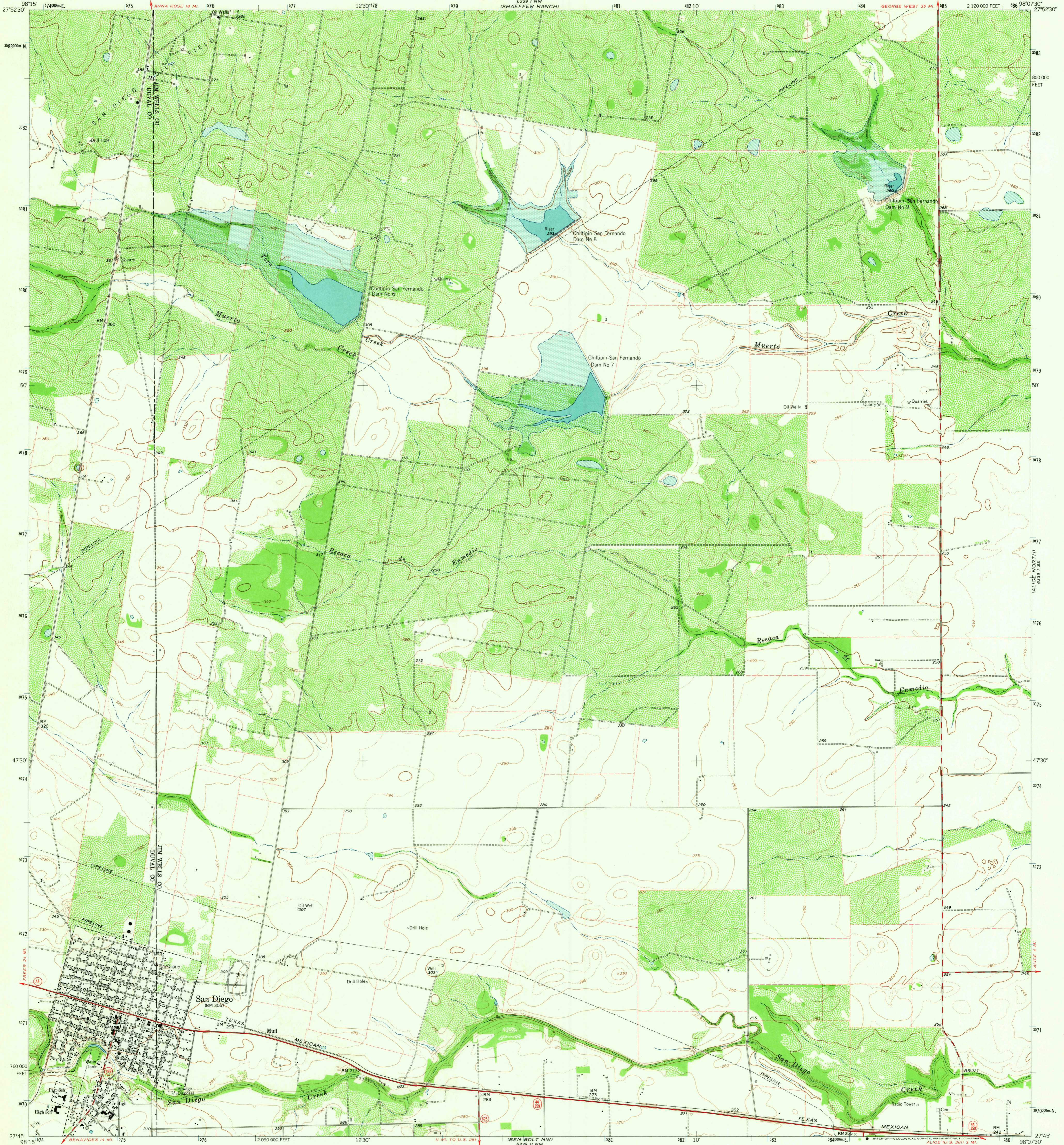


6339 1 NE  
(SAN DIEGO NE)

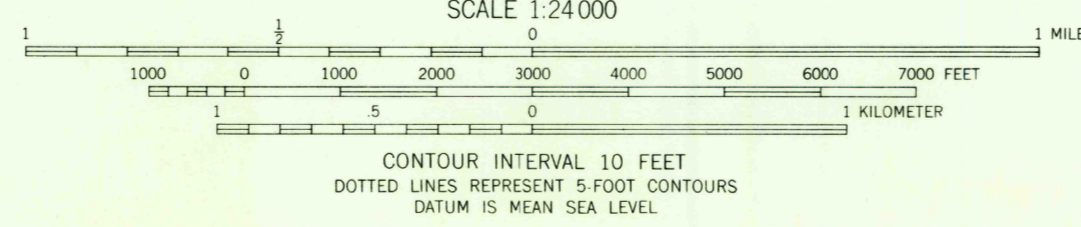
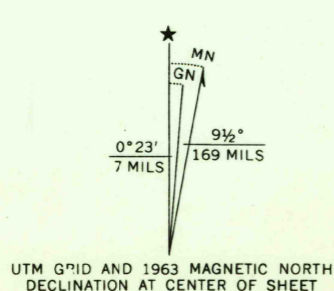


Mapped, edited, and published by the Geological Survey

Control by USGS and USC&GS  
Topography by photogrammetric methods from aerial  
photographs taken 1961-1962. Field checked 1963

Polyconic projection. 1927 North American datum  
10,000-foot grid based on Texas coordinate system, south zone  
1000-meter Universal Transverse Mercator grid ticks,  
zone 14, shown in blue

Fine red dashed lines indicate selected fence lines  
Areas covered by dashed light-blue pattern are subject  
to controlled inundation



| ROAD CLASSIFICATION |                 |
|---------------------|-----------------|
| Heavy-duty          | Light-duty      |
| Medium-duty         | Unimproved dirt |
| State Route         |                 |

OCT 9 1964

THIS MAP COMPLIES WITH NATIONAL MAP ACCURACY STANDARDS  
FOR SALE BY U.S. GEOLOGICAL SURVEY, DENVER 25, COLORADO OR WASHINGTON 25, D.C.  
A FOLDER DESCRIBING TOPOGRAPHIC MAPS AND SYMBOLS IS AVAILABLE ON REQUEST

U.S.G.S.  
FILE COPY  
TOPOGRAPHIC DIVISION

SAN DIEGO, TEX.  
N2745-W9807.5/7.5  
1963

2640

AMS 6339 1 SW - SERIES V882