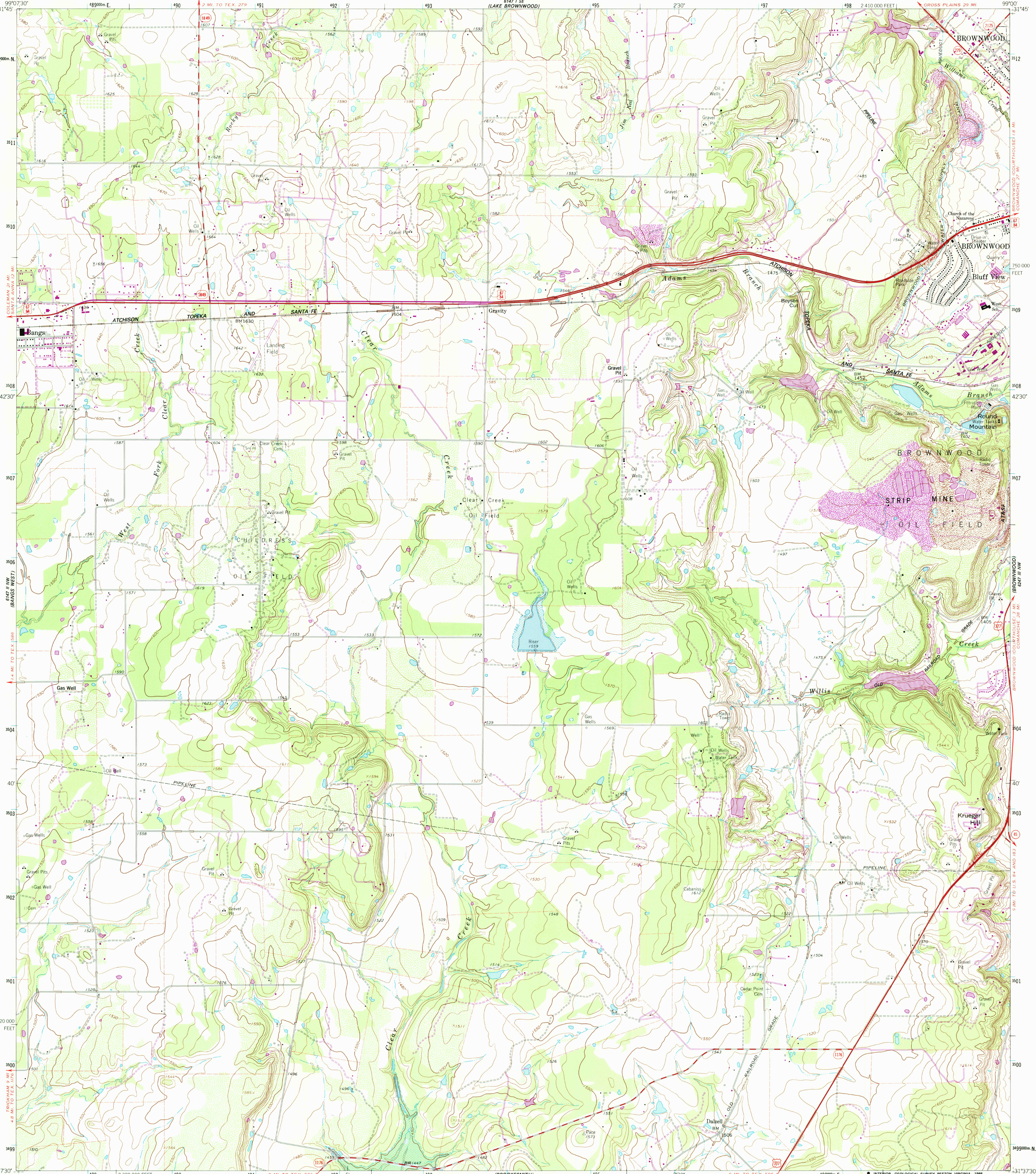


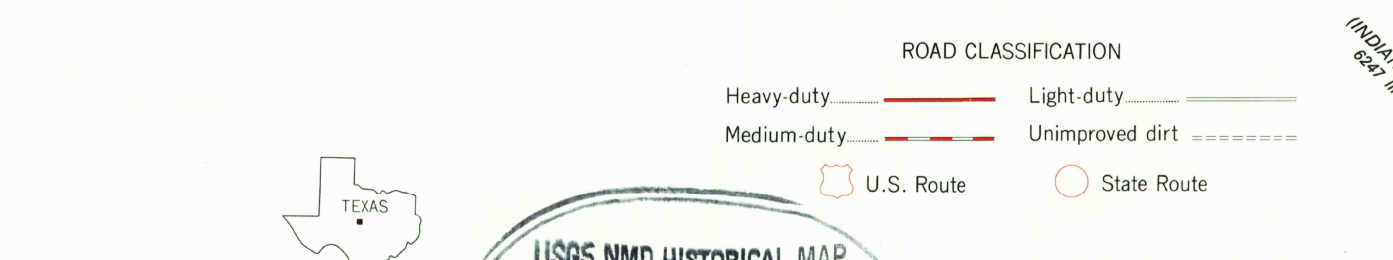
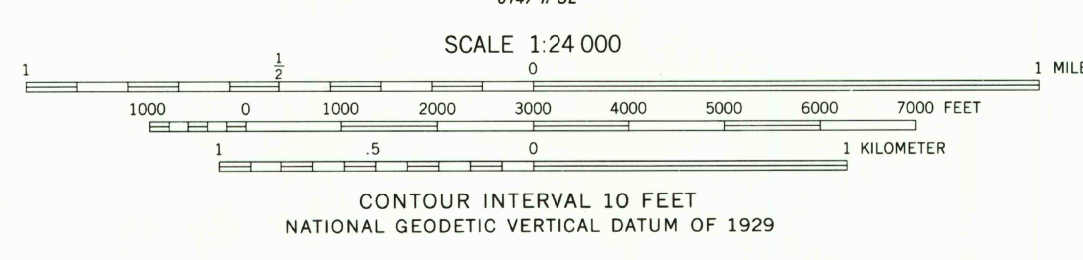
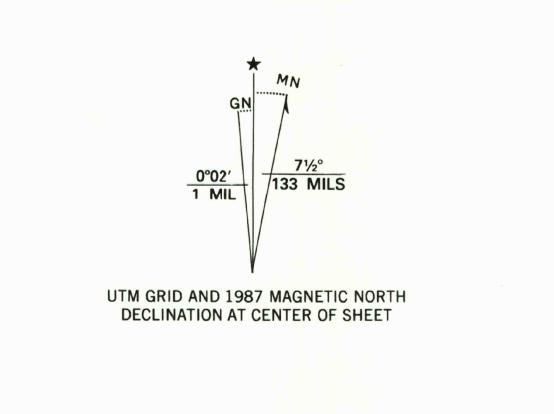
99°07'30" W
31°14'5" N
31°11'
31°10'
31°07'
31°04'
31°01'
30°58'
30°55'
30°52'
30°49'
30°46'
30°43'
30°40'
30°37'
30°34'
30°31'
30°28'
30°25'
30°22'
30°19'
30°16'
30°13'
30°10'
30°07'
30°04'
30°01'
29°58'
29°55'
29°52'
29°49'
29°46'
29°43'
29°40'
29°37'
29°34'
29°31'
29°28'
29°25'
29°22'
29°19'
29°16'
29°13'
29°10'
29°07'
29°04'
29°01'
28°58'
28°55'
28°52'
28°49'
28°46'
28°43'
28°40'
28°37'
28°34'
28°31'
28°28'
28°25'
28°22'
28°19'
28°16'
28°13'
28°10'
28°07'
28°04'
28°01'
27°58'
27°55'
27°52'
27°49'
27°46'
27°43'
27°40'
27°37'
27°34'
27°31'
27°28'
27°25'
27°22'
27°19'
27°16'
27°13'
27°10'
27°07'
27°04'
27°01'
26°58'
26°55'
26°52'
26°49'
26°46'
26°43'
26°40'
26°37'
26°34'
26°31'
26°28'
26°25'
26°22'
26°19'
26°16'
26°13'
26°10'
26°07'
26°04'
26°01'
25°58'
25°55'
25°52'
25°49'
25°46'
25°43'
25°40'
25°37'
25°34'
25°31'
25°28'
25°25'
25°22'
25°19'
25°16'
25°13'
25°10'
25°07'
25°04'
25°01'
24°58'
24°55'
24°52'
24°49'
24°46'
24°43'
24°40'
24°37'
24°34'
24°31'
24°28'
24°25'
24°22'
24°19'
24°16'
24°13'
24°10'
24°07'
24°04'
24°01'
23°58'
23°55'
23°52'
23°49'
23°46'
23°43'
23°40'
23°37'
23°34'
23°31'
23°28'
23°25'
23°22'
23°19'
23°16'
23°13'
23°10'
23°07'
23°04'
23°01'
22°58'
22°55'
22°52'
22°49'
22°46'
22°43'
22°40'
22°37'
22°34'
22°31'
22°28'
22°25'
22°22'
22°19'
22°16'
22°13'
22°10'
22°07'
22°04'
22°01'
21°58'
21°55'
21°52'
21°49'
21°46'
21°43'
21°40'
21°37'
21°34'
21°31'
21°28'
21°25'
21°22'
21°19'
21°16'
21°13'
21°10'
21°07'
21°04'
21°01'
20°58'
20°55'
20°52'
20°49'
20°46'
20°43'
20°40'
20°37'
20°34'
20°31'
20°28'
20°25'
20°22'
20°19'
20°16'
20°13'
20°10'
20°07'
20°04'
20°01'
19°58'
19°55'
19°52'
19°49'
19°46'
19°43'
19°40'
19°37'
19°34'
19°31'
19°28'
19°25'
19°22'
19°19'
19°16'
19°13'
19°10'
19°07'
19°04'
19°01'
18°58'
18°55'
18°52'
18°49'
18°46'
18°43'
18°40'
18°37'
18°34'
18°31'
18°28'
18°25'
18°22'
18°19'
18°16'
18°13'
18°10'
18°07'
18°04'
18°01'
17°58'
17°55'
17°52'
17°49'
17°46'
17°43'
17°40'
17°37'
17°34'
17°31'
17°28'
17°25'
17°22'
17°19'
17°16'
17°13'
17°10'
17°07'
17°04'
17°01'
16°58'
16°55'
16°52'
16°49'
16°46'
16°43'
16°40'
16°37'
16°34'
16°31'
16°28'
16°25'
16°22'
16°19'
16°16'
16°13'
16°10'
16°07'
16°04'
16°01'
15°58'
15°55'
15°52'
15°49'
15°46'
15°43'
15°40'
15°37'
15°34'
15°31'
15°28'
15°25'
15°22'
15°19'
15°16'
15°13'
15°10'
15°07'
15°04'
15°01'
14°58'
14°55'
14°52'
14°49'
14°46'
14°43'
14°40'
14°37'
14°34'
14°31'
14°28'
14°25'
14°22'
14°19'
14°16'
14°13'
14°10'
14°07'
14°04'
14°01'
13°58'
13°55'
13°52'
13°49'
13°46'
13°43'
13°40'
13°37'
13°34'
13°31'
13°28'
13°25'
13°22'
13°19'
13°16'
13°13'
13°10'
13°07'
13°04'
13°01'
12°58'
12°55'
12°52'
12°49'
12°46'
12°43'
12°40'
12°37'
12°34'
12°31'
12°28'
12°25'
12°22'
12°19'
12°16'
12°13'
12°10'
12°07'
12°04'
12°01'
11°58'
11°55'
11°52'
11°49'
11°46'
11°43'
11°40'
11°37'
11°34'
11°31'
11°28'
11°25'
11°22'
11°19'
11°16'
11°13'
11°10'
11°07'
11°04'
11°01'
10°58'
10°55'
10°52'
10°49'
10°46'
10°43'
10°40'
10°37'
10°34'
10°31'
10°28'
10°25'
10°22'
10°19'
10°16'
10°13'
10°10'
10°07'
10°04'
10°01'
9°58'
9°55'
9°52'
9°49'
9°46'
9°43'
9°40'
9°37'
9°34'
9°31'
9°28'
9°25'
9°22'
9°19'
9°16'
9°13'
9°10'
9°07'
9°04'
9°01'
8°58'
8°55'
8°52'
8°49'
8°46'
8°43'
8°40'
8°37'
8°34'
8°31'
8°28'
8°25'
8°22'
8°19'
8°16'
8°13'
8°10'
8°07'
8°04'
8°01'
7°58'
7°55'
7°52'
7°49'
7°46'
7°43'
7°40'
7°37'
7°34'
7°31'
7°28'
7°25'
7°22'
7°19'
7°16'
7°13'
7°10'
7°07'
7°04'
7°01'
6°58'
6°55'
6°52'
6°49'
6°46'
6°43'
6°40'
6°37'
6°34'
6°31'
6°28'
6°25'
6°22'
6°19'
6°16'
6°13'
6°10'
6°07'
6°04'
6°01'
5°58'
5°55'
5°52'
5°49'
5°46'
5°43'
5°40'
5°37'
5°34'
5°31'
5°28'
5°25'
5°22'
5°19'
5°16'
5°13'
5°10'
5°07'
5°04'
5°01'
4°58'
4°55'
4°52'
4°49'
4°46'
4°43'
4°40'
4°37'
4°34'
4°31'
4°28'
4°25'
4°22'
4°19'
4°16'
4°13'
4°10'
4°07'
4°04'
4°01'
3°58'
3°55'
3°52'
3°49'
3°46'
3°43'
3°40'
3°37'
3°34'
3°31'
3°28'
3°25'
3°22'
3°19'
3°16'
3°13'
3°10'
3°07'
3°04'
3°01'
2°58'
2°55'
2°52'
2°49'
2°46'
2°43'
2°40'
2°37'
2°34'
2°31'
2°28'
2°25'
2°22'
2°19'
2°16'
2°13'
2°10'
2°07'
2°04'
2°01'
1°58'
1°55'
1°52'
1°49'
1°46'
1°43'
1°40'
1°37'
1°34'
1°31'
1°28'
1°25'
1°22'
1°19'
1°16'
1°13'
1°10'
1°07'
1°04'
1°01'
0°58'
0°55'
0°52'
0°49'
0°46'
0°43'
0°40'
0°37'
0°34'
0°31'
0°28'
0°25'
0°22'
0°19'
0°16'
0°13'
0°10'
0°07'
0°04'
0°01'

UNITED STATES
DEPARTMENT OF THE INTERIOR
GEOLOGICAL SURVEY

BANGS EAST QUADRANGLE
TEXAS-BROWN CO.
7.5 MINUTE SERIES (TOPOGRAPHIC)



Produced by the United States Geological Survey
Control by USGS and NOS/NOAA
Topography by photogrammetric methods from aerial photographs taken 1961. Field checked 1962.
Polyconic projection. 1927 North American Datum
10,000-foot grid based on Texas coordinate system, central zone
1000-meter Universal Transverse Mercator grid ticks, zone 14, shown in blue.
To place on the predicted North American Datum 1983, move the projection lines 13 meters south and 32 meters east as shown by dashed corner ticks.
Areas covered by dashed light-blue pattern are subject to controlled inundation.
Revisions shown in purple compiled from aerial photographs taken 1983 and other sources. This information not field checked. Map edited 1987.



USGS NMD NATIONAL MAP
OCT 14 1988
REC'D FILE COPY

BANGS EAST, TEX.
31099-F1-TF-024
1962
PHOTOREVISED 1987
DMA 6147 II NE-SERIES V882

THIS MAP COMPLIES WITH NATIONAL MAP ACCURACY STANDARDS
FOR SALE BY U.S. GEOLOGICAL SURVEY, DENVER, COLORADO 80225, OR RESTON, VIRGINIA 22092
A FOLDER DESCRIBING TOPOGRAPHIC MAPS AND SYMBOLS IS AVAILABLE ON REQUEST

3199-414